

**ALEX LYON & SON SALES MANAGERS & AUCTIONEERS**

**PROUDLY PRESENT THE**

# **32<sup>ND</sup> ANNUAL FLORIDA AUCTION**

## **BUSHNELL, FLORIDA**

**FRIDAY, JANUARY 31<sup>ST</sup> - MONDAY, FEBRUARY 10<sup>TH</sup> AT 9:00 AM**

**ONSITE-LIVE / TIMED AUCTIONS**

### **UNBELIEVABLE! - BY POPULAR DEMAND**

### **THIS SALE WILL BE 11-DAYS!**

### **THE GREATEST SALE OF THE YEAR!**

**11 GLORIOUS DAYS OF SELLING NEW & LIKE NEW RENTAL FLEET EQUIPMENT. ONLY THE BEST TO BE FOUND HERE. CONSTRUCTION, UTILITY EQUIPMENT, AERIAL LIFTS, FORKLIFTS, DUMP TRUCKS, TRUCK TRACTORS, ALL TYPES OF TRAILERS(THE BEST), ENORMOUS AMOUNT OF NEW & LIKE NEW SUPPORT, ATTACHMENTS**



2025





# BUSHNELL, FLORIDA

FRI., JANUARY 31<sup>st</sup> - MON., FEBRUARY 10<sup>th</sup> AT 9:00 AM



## SPECIAL ANNOUNCEMENT: ONLINE BIDDING AVAILABLE FOR ALL DAYS!

**ADDRESS:** 716 CR 475, Bushnell, Florida 33513 (I-75 Exit 321, one mile south of East CR 470). **JACK'S NOTE:** Where the Best Equipment is the Norm, not the Exception. The Greatest Auction On Planet Earth. Primarily selling 2016-2024 Construction, Cat, Komatsu, JD, Case, LinkBelt, Volvo, Atlas Copco, Aerial Equipment, Trucks and Trailers. **FLORIDA AUCTIONEER:** AU-1548 Jack Lyon. **FLORIDA LICENSE:** #AB-1091. **SALE SITE PHONE:** (407) 239-2700. **★ SPECIAL NOTE ★** Special Note: For Non-Resident US Bidders: A \$10,000 Cashier's Check Deposited Prior to Bidding will be Required-No Exceptions. **★ NO EXCEPTIONS ★ TERMS & CONDITIONS:** UPDATE: Cash payment will only be accepted on sale day. After the sale day, all items must be paid for by Certified Check, Wire Transfer, or Credit Card. "Certified Check" made payable to Alex Lyon & Son. Everything Sells "AS IS, WHERE IS." The following charges will apply to all purchases: (1.) For each unit \$50,001.00 and above, a 5.99% administration fee will be assessed when paying with Cash, Certified Check, or Wire Transfer. (The standard fee of 8.99% will be assessed when paying with credit card); (2.) For each unit \$3,501- \$50,000, a 10% administration fee will be assessed when paying with Cash, Certified Check, or Wire Transfer. (The standard fee of 13% will be assessed when paying with credit card); (3.) For each unit \$1- \$3,500, a 12.5% administration fee will be assessed when with Cash, Certified Check, or Wire Transfer. (The standard fee of 15.5% will be assessed when paying with a credit card). **\*\*ONLINE BIDDING: An additional fee of 2.5%, cap of \$700 for each piece.\*\*** The Bidder is responsible for knowing which item he/she is bidding on. If he/she is unsure, he/she should inquire or not bid. When you become the winning bidder at auction you have effected a contract and will be expected to pay for items in which you were evidenced to be the successful bidder. Auctioneer will not honor "mistakes".

## 5 OF THE 11 DAY AUCTION WILL BE TIMED! AUCTIONING 5,000 ITEMS

### DAY 1

OPENS: FRIDAY, JANUARY 24<sup>th</sup> AT 9:00 AM  
CLOSES: FRIDAY, JANUARY 31<sup>st</sup> AT 9:00 AM

### DAY 2

OPENS: SATURDAY, JANUARY 25<sup>th</sup> AT 9:00 AM  
CLOSES: SATURDAY, FEBRUARY 1<sup>st</sup> AT 9:00 AM

### DAY 3

OPENS: SUNDAY, JANUARY 26<sup>th</sup> AT 9:00 AM  
CLOSES: SUNDAY, FEBRUARY 2<sup>nd</sup> AT 9:00 AM

### DAY 10

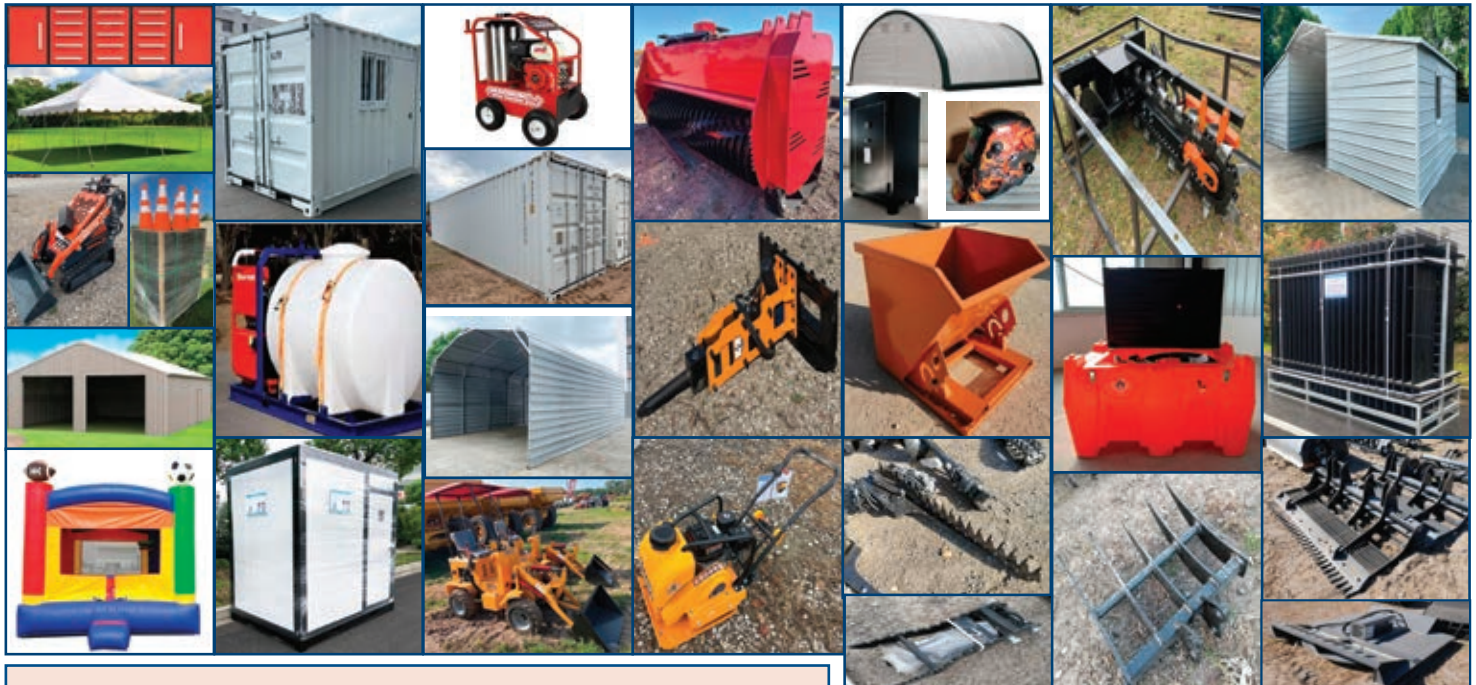
OPENS: SUNDAY, FEBRUARY 2<sup>nd</sup> AT 9:00 AM  
CLOSES: SUNDAY, FEBRUARY 9<sup>th</sup> AT 9:00 AM

### DAY 11

OPENS: MONDAY, FEBRUARY 3<sup>rd</sup> AT 9:00 AM  
CLOSES: MONDAY, FEBRUARY 10<sup>th</sup> AT 9:00 AM

### TIMED ITEMS, INCLUDE:

HYDRAULIC EXCAVATORS, MINI TIRED LOADERS, MINI TRACKED DUMPERS, SKID STEER ATTACHMENTS  
 MULTI-USE CONTAINERS, CONTAINERS, MOBILE HOUSES, PORTABLE BATHROOM STATIONS  
 STORAGE BUILDINGS, SCRAP RECYCLING EQUIPMENT, UTILITY VEHICLES, GOLF CARTS, RECREATIONAL VEHICLES, BOUNCE  
 HOUSES, PARTY RENTAL TENTS, PRESSURE WASHERS, TAGALONG TRAILERS, DUMP TRAILERS, EXCAVATOR ATTACHMENTS  
 AND TRACTOR LOADER BACKHOE ATTACHMENTS. (OVER 2,000 LOTS NEW SUPPORT EQUIPMENT)



**Pre-bidding Open for all days!**

Please refer to [lyonauction.com](http://lyonauction.com) for an up-to-date listing.



# DAY 4 MONDAY, FEBRUARY 3

Boom & Scissor Lifts, Several New & Used Tagalong Trailers, Utility Vehicles, Recreational Vehicles, Support Equipment, Elevators, New Tools & Support Equipment (Small Amount), Containers, Portable Bathrooms.

## 103 BOOM LIFTS



(2) **GENIE Z-135/70** 4x4, powered by diesel engine, equipped with 135ft. Platform height, articulating boom, 500lb lift capacity.



(7) **2016 GENIE S-85** 4x4, powered by diesel engine, equipped with 85ft. Platform height, straight boom, 500lb lift capacity.

(2) **GENIE S-80** 4x4, powered by diesel engine, equipped with 80ft. Platform height, straight boom, 500lb lift capacity.



(2) **2015 GENIE S-65** 4x4, powered by diesel engine, equipped with 65ft. Platform height, straight boom, 500lb lift capacity.

(2) **GENIE S-60X** 4x4, powered by diesel engine, equipped with 60ft. Platform height, straight boom, 500lb lift capacity.

**GENIE Z-60/34** SN:Z6013-12899 4x4, powered by diesel engine, equipped with 60ft. Platform height, articulating boom, 500lb lift capacity.

**2015 GENIE S-45** SN:S4515-20925 4x4, powered by diesel engine, equipped with 45ft. Platform height, straight boom, 500lb lift capacity.

**2015 GENIE Z-45/25J IC** SN:ZER2515A-54140 4x4, powered by diesel engine, equipped with 45ft. Platform height, articulating boom, JIB, 500lb lift capacity.

**JLG 1250AJP** SN:300156714 4x4, powered by diesel engine, equipped with 125ft. Platform height, articulating boom, JIB, 500lb lift capacity.

**JLG 1200SJP** SN:300164261 4x4, powered by diesel engine, equipped with 125ft. Platform height, articulating boom, JIB, 500lb lift capacity.

(3) **2016 JLG 860SJ** 4x4, powered by diesel engine, equipped with 86ft. Platform height, straight boom, JIB, 500lb lift capacity.

(2) **2016 JLG 800S** 4x4, powered by diesel engine, equipped with 80ft. Platform height, straight boom, 500lb lift capacity.

**JLG 800SJ** SN:300100832 4x4, powered by diesel engine, equipped with 80ft. Platform height, straight boom, JIB, 500lb lift capacity.



(6) **JLG 800S** 4x4, powered by diesel engine, equipped with 80ft. Platform height, straight boom, Skypower, 500lb lift capacity.

(9) **JLG 800AJ** 4x4, powered by diesel engine, equipped with 80ft. Platform height, articulating boom, 500lb lift capacity.

(4) **2016 JLG 660SJ** 4x4, powered by diesel engine, equipped with 60ft. Platform height, straight boom, JIB, 500lb lift capacity.

**2016 JLG 600AJ** SN:300216834 4x4, powered by diesel engine, equipped with 60ft. Platform height, articulating boom, JIB, 500lb lift capacity.



(5) **2015 JLG 600S** 4x4, powered by diesel engine, equipped with 60ft. Platform height, straight boom, 500lb lift capacity.

(2) **JLG 600S** 4x4, powered by diesel engine, equipped with 60ft. Platform height, straight boom, 500lb lift capacity.

(2) **JLG 600AJ** 4x4, powered by diesel engine, equipped with 60ft. Platform height, straight boom, 500lb lift capacity.

(3) **2016 JLG 460SJ** 4x4, powered by diesel engine, equipped with 46ft. Platform height, straight boom, JIB, 500lb lift capacity.

(4) **NEW UNUSED JLG 450AJ** 4x4, powered by diesel engine, equipped with 45ft. Platform height, articulating boom, JIB, Skypower, 500lb lift capacity.

(2) **2015 JLG 450AJ** 4x4, powered by diesel engine, equipped with 45ft. Platform height, articulating boom, JIB, 500lb lift capacity.



**JLG 400AJP** SN:71844 4x4, powered by diesel engine, equipped with 40ft. Platform height, articulating boom, JIB, 500lb lift capacity. HR-1160

(10) **2016 JLG 400S** 4x4, powered by diesel engine, equipped with 40ft. Platform height, straight boom, 500lb lift capacity.

(4) **2019 SNORKEL TB86J** 4x4, powered by diesel engine, equipped with 86ft. Platform height, straight boom, JIB, 500lb lift capacity.



(4) **2017 SNORKEL TB86J** 4x4, powered by diesel engine, equipped with 86ft. Platform height, straight boom, JIB, 500lb lift capacity.



(2) **2015 SNORKEL TB85J** 4x4, powered by diesel engine, equipped with 85ft. Platform height, straight boom, JIB, 500lb lift capacity.



(2) **2015 SNORKEL TB66J** 4x4, powered by diesel engine, equipped with 66ft. Platform height, straight boom, JIB, 500lb lift capacity.

**2018 SNORKEL 660SJ** 4x4, powered by diesel engine, equipped with 66ft. Platform height, straight boom, JIB, 500lb lift capacity.

(2) **2017 SNORKEL AB60J** 4x4, powered by diesel engine, equipped with 60ft. Platform height, articulating boom, JIB, 500lb lift capacity.

**SNORKEL AB60J** SN:JA07084 4x4, powered by diesel engine, equipped with 60ft. Platform height, straight boom, JIB, 500lb lift capacity.

**SNORKEL TB60** SN:993492 4x4, powered by diesel engine, equipped with 60ft. Platform height, straight boom, 500lb lift capacity.

**SNORKEL TB60** SN:S0808010160RBLT 4x4, powered by diesel engine, equipped with 60ft. Platform height, straight boom, 500lb lift capacity.

**2018 SNORKEL A46JRT** 4x4, powered by diesel engine, equipped with 46ft. Platform height, articulating boom, JIB, 500lb lift capacity.

(2) **SNORKEL TB42J** 4x4, powered by diesel engine, equipped with 42ft. Platform height, straight boom, JIB, 500lb lift capacity.

**2016 SNORKEL MB20J** electric powered, equipped with 20ft. Platform height, articulating boom, JIB, 500lb lift capacity.

**2015 SKYJACK SJ66T** SN:97001346 4x4, powered by diesel engine, equipped with 66ft. Platform height, straight boom, JIB, 500lb lift capacity.

**2015 SKYJACK SJ63AJ** SN:95300487 4x4, powered by diesel engine, equipped with 63ft. Platform height, articulating boom, JIB, 500lb lift capacity.

**2015 SKYJACK SJ61T** SN:97001371 4x4, powered by diesel engine, equipped with 61ft. Platform height, straight boom, JIB, 500lb lift capacity.



**2015 SKYJACK SJ45T** SN:98001359 4x4, powered by diesel engine, equipped with 45ft. Platform height, straight boom, JIB, 500lb lift capacity.

**SNORKEL TB42DZ** SN:SP05043RBLT 4x4, powered by diesel engine, equipped with 42ft. Platform height, straight boom, 500lb lift capacity.

## 8 ELECTRIC BOOM LIFTS

**NEW UNUSED JLG T500L** electric powered, equipped with 50ft. Platform height, articulating boom, hydraulic outriggers, power and air to platform, 4ft. Basket, ST215/75R14 tires, trailer mounted. Factory Warranty.

**(3) NEW UNUSED JLG T350** electric powered, equipped with 35ft. Platform height, articulating boom, hydraulic outriggers, power and air to platform, 4ft. Basket, ST215/75R14 tires, trailer mounted. Factory Warranty.

**2017 SNORKEL A46JE** electric powered, equipped with 46ft. Platform height, articulating boom, JIB, 500lb lift capacity.

**(2) 2015 SNORKEL A46JE** electric powered, equipped with 46ft. Platform height, articulating boom, JIB, 500lb lift capacity.

**SNORKEL A46JE** SN:A46JE-04-000044 electric powered, equipped with 46ft. Platform height, slide out deck, 500lb lift capacity.

## 114 SCISSOR LIFTS

**2017 JLG 4394RT** SN:0200171867 4x4, powered by diesel engine, equipped with 43ft. Platform height, slide out deck, rough terrain tires.

**JLG 4394RT** SN:200174853 4x4, powered by diesel engine, equipped with 43ft. Platform height, slide out deck, rough terrain tires.

**(2) 2016 JLG 4069LE** electric powered, equipped with 40ft. Platform height, slide out deck, 500lb lift capacity.

**(3) JLG 4069LE** electric powered, equipped with 40ft. Platform height, slide out deck, 500lb lift capacity, 729 hours.

**2016 JLG 3369LE** SN:0200252439 electric powered, equipped with 33ft. Platform height, slide out deck, 500lb lift capacity, 198 hours.

**2017 GENIE GS-4390 RT** SN:GS90F-54076 4x4, powered by diesel engine, equipped with 43ft. Platform height, slide out deck, rough terrain tires.

**(2) 2016 GENIE GS-4390 RT** 4x4, powered by diesel engine, equipped with 43ft. Platform height, slide out deck, rough terrain tires.

**2019 SNORKEL S3970BE** Bi-energy Kubota D-902 water-cooled diesel 22.5hp and 4 x 6v 305Ah batteries, equipped with 39ft. Platform height, slide out deck, rough terrain tires.



**2019 SNORKEL S4732E** electric powered, equipped with 32ft. Platform height, slide out deck, 500lb lift capacity.



**(2) 2017 SNORKEL S4732E** electric powered, equipped with 32ft. Platform height, slide out deck, 500lb lift capacity.

**(2) 2016 SNORKEL S4732E** electric powered, equipped with 32ft. Platform height, slide out deck, 500lb lift capacity.

**(2) 2016 SNORKEL S4732E** electric powered, equipped with 32ft. Platform height, slide out deck, 500lb lift capacity.

**(2) 2018 SNORKEL S4726E** electric powered, equipped with 26ft. Platform height, slide out deck, 500lb lift capacity.

**2016 SNORKEL S4726E** electric powered, equipped with 26ft. Platform height, slide out deck, 500lb lift capacity.

**(8) 2019 SNORKEL S3226E** electric powered, equipped with 26ft. Platform height, slide out deck, 500lb lift capacity.

**2017 SNORKEL S3226E** SN:S3226E-04-170900335 electric powered, equipped with 26ft. Platform height, slide out deck, 500lb lift capacity.

**(2) 2018 SNORKEL S3219E** electric powered, equipped with 19ft. Platform height, slide out deck, 500lb lift capacity.

**(4) 2017 SNORKEL S3219E** electric powered, equipped with 19ft. Platform height, slide out deck, 500lb lift capacity.



**(2) 2020 SNORKEL S3215L** electric powered, equipped with 15ft. Platform height, slide out deck, 500lb lift capacity.

**(5) 2019 SNORKEL S3215L** electric powered, equipped with 15ft. Platform height, slide out deck, 500lb lift capacity.

**(6) 2019 SNORKEL S3010E** electric powered, equipped with 10ft. Platform height, slide out deck, 500lb lift capacity.

**2019 SNORKEL S3010P** electric powered, equipped with 10ft. Platform height, slide out deck, 500lb lift capacity.

**2018 SNORKEL S3010P** electric powered, equipped with 10ft. Platform height, slide out deck, 500lb lift capacity.

**2019 SNORKEL UL32DC** electric powered, equipped with 32ft. Platform height, slide out deck, 500lb lift capacity.

**(4) 2020 SNORKEL TM12E** electric powered, equipped with 12ft. Platform height, slide out deck, 500lb lift capacity.

**(9) 2019 SNORKEL TM12E** electric powered, equipped with 12ft. Platform height, slide out deck, 500lb lift capacity.

**2016 SKYJACK SJ9250RT** SN:50001738 4x4, powered by diesel engine, equipped with 50ft. Platform height, slide out deck, hydraulic outriggers, rough terrain tires, 1,710 hours.

**(4) 2015 SKYJACK SJ9250RT** 4x4, powered by diesel engine, equipped with 50ft. Platform height, slide out deck, hydraulic outriggers, rough terrain tires.

**2017 SKYJACK SJ8841RT** SN:40002136 4x4, powered by diesel engine, equipped with 41ft. Platform height, slide out deck, rough terrain tires.

**(4) 2016 SKYJACK SJ8841RT** 4x4, powered by diesel engine, equipped with 41ft. Platform height, slide out deck, rough terrain tires.

**(4) SKYJACK SJ8841RT** 4x4, powered by diesel engine, equipped with 41ft. Platform height, slide out deck, rough terrain tires.

**SKYJACK SJ7135RT** SN:34000088 4x4, powered by diesel engine, equipped with 35ft. Platform height, slide out deck, rough terrain tires.



**2017 SKYJACK SJ6826RT** SN:37010784 4x4, powered by diesel engine, equipped with 26ft. Platform height, slide out deck, rough terrain tires, 1,879 hours.

**(5) 2015 SKYJACK SJIII4626** electric powered, equipped with 26ft. Platform height, slide out deck, 500lb lift capacity.

**(8) SKYJACK SJIII4626** electric powered, equipped with 26ft. Platform height, slide out deck, 500lb lift capacity.

**(10) SKYJACK SJIII3219** electric powered, equipped with 19ft. Platform height, slide out deck, 500lb lift capacity.

**(2) MEC 5492RT** 4x4, powered by diesel engine, equipped with 54ft. Platform height, slide out deck, rough terrain tires.

**2015 MEC 4069RT** SN:13500086 4x4, powered by diesel engine, equipped with 40ft. Platform height, slide out deck, rough terrain tires.

**(3) MEC 4069ERT** electric powered, equipped with 40ft. Platform height, slide out deck, 500lb lift capacity, rough terrain tires.



**2015 MEC 3259 ERT** SN:13100323 4x4, electric powered, equipped with 32ft. Platform height, slide out deck, rough terrain tires, 269 hours.

**2016 MEC 1330SE** SN:16300490 electric powered, equipped with 13ft. Platform height, slide out deck, 500lb lift capacity.

**HYBRID HB1430** SN:D02-11030 electric powered, equipped with 14ft. Platform height, slide out deck, 500lb lift capacity, 63 hours.

### ALSO SELLING ON DAY 4

Please refer to [lyonauction.com](http://lyonauction.com) for an up-to-date listing.

HYDRAULIC EXCAVATORS

MINI TIRED LOADERS

MINI TRACK LOADERS

MINI TRACKED DUMPERS

TAGALONG TRAILERS

UTILITY VEHICLES

GOLF CARTS

RECREATIONAL VEHICLES

MULTI-USE CONTAINERS

CONTAINERS

PORTABLE BATHROOM STATIONS

STORAGE BUILDINGS

SCRAP RECYCLING EQUIPMENT

BOUNCE HOUSES

PARTY RENTAL TENTS

PRESSURE WASHERS

OVER 200 LOTS OF NEW SUPPORT

EQUIPMENT

WHOLE HOUSE GENERATORS

## DAY 5 TUESDAY, FEBRUARY 4

Agricultural - Utility - Compact & Loader Landscape Tractors, Concrete Equipment, Utility Carts, Chippers & Stump Grinders, Agricultural Attachments, Air Compressors, Generators, Arrow & Message Boards, Light Plants, Welders, Pumps, Trenchers, Landscape Equipment, Several Hydraulic Excavators, Water Pumps, Directional Boring Machines, Drilling Equipment, Rock Saws, Road Plates, Diesel Engines, New & Used Tagalong Trailers, Utility Vehicles, Recreational Vehicles, Air Winches, Containers, New Tools & Support Equipment (Small Amount), Skid Steer Attachments, Trench Boxes, Portable Bathrooms..

### 4 AGRICULTURAL TRACTORS



**2018 NEW HOLLAND T5.105** SN:JJJ01414 4x4, powered by diesel engine, equipped with EROPS, 16x16 Semi Power Shift transmission, 540/1000 PTO, 2-rear remotes, 1,120 hours.

**2018 NEW HOLLAND T5.105** SN:JJJ01466 4x4, powered by diesel engine, equipped with EROPS, 16x16 Semi Power Shift transmission, 540/1000 PTO, 2-rear remotes, 1,400 hours.

**2018 NEW HOLLAND T5.105** SN:JJJ01485 4x4, powered by diesel engine, equipped with EROPS, 16x16 Semi Power Shift transmission, 540/1000 PTO, 2-rear remotes, 1,340 hours.

**JOHN DEERE 7130** 4x4, powered by John Deere diesel engine, equipped with OROPS, dual remotes.

### 17 TRACTOR LOADERS



**DEMO NEW HOLLAND PROSTAR 100** 4x4, powered by diesel engine, equipped with EROPS, 12x12 power shuttle transmission, New Holland 720LU front loader w/ SSL quick attach 84in. GP bucket, 2-rear remotes, R1 AG tires, 10 hours.



**2024 NEW HOLLAND WORKMASTER 95** SN:1609287 4x4, powered by diesel engine, equipped with EROPS, 12x12 power shuttle transmission, New Holland 632TL front loader w/ SSL quick attach 84in. GP bucket, 2-rear remotes, R1 AG tires, 390 hours.

**2024 NEW HOLLAND WORKMASTER 95** SN:1656635 4x4, powered by diesel engine, equipped with EROPS, 12x12 power shuttle transmission, New Holland 632TL front loader w/ SSL quick attach 84in. GP bucket, 2-rear remotes, R1 AG tires, 360 hours.

**2024 NEW HOLLAND WORKMASTER 95** SN:1639066 4x4, powered by diesel engine, equipped with EROPS, 12x12 power shuttle transmission, New Holland 632TL front loader w/ SSL quick attach 84in. GP bucket, 2-rear remotes, R1 AG tires, 375 hours.



**2024 NEW HOLLAND WORKMASTER 70** SN:5599390 4x4, powered by diesel engine, equipped with ROPS, 8x8 power shuttle transmission, New Holland 621TL front loader w/ SSL quick attach 84in. GP bucket, 2-rear remotes, R1 AG tires, 355 hours.

**2024 NEW HOLLAND WORKMASTER 70** SN:5599406 4x4, powered by diesel engine, equipped with ROPS, 8x8 power shuttle transmission, New Holland 621TL front loader w/ SSL quick attach 84in. GP bucket, 2-rear remotes, R1 AG tires, 320 hours.

**2024 NEW HOLLAND WORKMASTER 70** SN:5644176 4x4, powered by diesel engine, equipped with ROPS, 8x8 power shuttle transmission, New Holland 621TL front loader w/ SSL quick attach 84in. GP bucket, 2-rear remotes, R1 AG tires, 535 hours.

**2024 NEW HOLLAND WORKMASTER 70** SN:5646166 4x4, powered by diesel engine, equipped with ROPS, 8x8 power shuttle transmission, New Holland 621TL front loader w/ SSL quick attach 84in. GP bucket, 2-rear remotes, R1 AG tires, 380 hours.

**2024 NEW HOLLAND WORKMASTER 70** SN:5646164 4x4, powered by diesel engine, equipped with ROPS, 8x8 power shuttle transmission, New Holland 621TL front loader w/ SSL quick attach 84in. GP bucket, 2-rear remotes, R1 AG tires, 325 hours.

**2024 NEW HOLLAND WORKMASTER 70** SN:5674724 4x4, powered by diesel engine, equipped with ROPS, 8x8 power shuttle transmission, New Holland 621TL front loader w/ SSL quick attach 84in. GP bucket, 2-rear remotes, R1 AG tires, 355 hours.



**DEMO NEW HOLLAND WORKMASTER 55** 4x4, powered by diesel engine, equipped with EROPS, 12x12 power shuttle transmission, 2-rear remotes, R4 tires, 5 hours.



**DEMO ZETOR P100SS** SN:000P4B4R37YB03561 4x4, powered by diesel engine, equipped with EROPS, air, heat, 3pt hitch, PTO, 3-rear hydraulic remotes, 340/85R24 front tires, 460/85R34 rear, 130 hours.

**DEMO ZETOR P100SS** SN:000P4B4R37YU03547 4x4, powered by diesel engine, equipped with EROPS, air, heat, 3pt hitch, PTO, 3-rear hydraulic remotes, 340/85R24 front tires, 460/85R34 rear, 20 hours.



**DEMO ZETOR P100SS** SN:000P4B4R37XR03537 4x4, powered by diesel engine, equipped with EROPS, air, heat, 3pt hitch, PTO, 3-rear hydraulic remotes, 340/85R24 front tires, 460/85R34 rear, 44 hours.





**DEMO ZETOR P100C4** SN:000P2B4J3VT02535 4x4, powered by diesel engine, equipped with EROPS, air, heat, 3pt hitch, PTO, 3-rear hydraulic remotes, 340/85R24 front tires, 460/85R34 rear, 1,079 hours.



**2019 KUBOTA M5-111HDC** SN:KBUM4EDCCK8F60938 4x4, powered by Kubota diesel engine, 111hp, equipped with OROPS, hydraulic shuttle transmission, Kubota front loader w/ GP bucket, 3pt hitch, PTO, 2,231 hours.

**KUBOTA M7040** 4x4, powered by Kubota diesel engine, equipped with ROPS, Kubota front loader w/ GP bucket, 3pt hitch, PTO.

### MOWING TRACTOR



**2015 NEW HOLLAND TS6-110** 4x4, powered by diesel engine, equipped with EROPS, air, heat, Alamo Machete 22ft. Hydraulic boom w/ 5ft. Rotary head, municipality owned.

### TRACTOR ATTACHMENT

**PEGUER X550 3PT CHIPPER** SN:85813

### 4 COMMERCIAL MOWERS

**FERRIS PRO CUT 61** powered by gas engine, equipped with 61in. Cutting deck, zero turn.  
**FERRIS IS3200Z** powered by gas engine, equipped with 61in. Cutting deck, zero turn.  
**(2) FERRIS IS2100Z** powered by gas engine, equipped with 61in. Cutting deck, zero turn.

### 16 AIR COMPRESSORS

**INGERSOLL RAND 1300IQ** SN:305826 powered by diesel engine, equipped with 1,300CFM, trailer mounted.  
**INGERSOLL RAND 1300IQ** SN:295083 powered by diesel engine, equipped with 1,300CFM, trailer mounted.  
**2017 ATLAS COPCO XAS440JD T4F** SN:HOP076818 powered by John Deere diesel engine, equipped with 440CFM, trailer mounted.

**2017 ATLAS COPCO XAS440JD T4F** SN:HOP077013 powered by diesel engine, equipped with 440CFM, trailer mounted.

**2016 ATLAS COPCO XATS400 JD IT4** SN:HOP076209 powered by John Deere diesel engine, equipped with 400CFM, trailer mounted.

**2014 ATLAS COPCO XAS400** SN:HOP074877 powered by Cummins diesel engine, equipped with 400CFM, trailer mounted.

**2017 ATLAS COPCO XAS185KD7 T4F** SN:HOP055713 powered by John Deere diesel engine, equipped with 440CFM, trailer mounted.

**2017 ATLAS COPCO XAS185KD7 T4F** SN:HOP055045 powered by diesel engine, equipped with 185CFM, trailer mounted.

**2016 DOOSAN P425/HP375WCUT4** SN:476343UDAAF15 powered by Cummins diesel engine, equipped with 425CFM, trailer mounted.

**2017 ATLAS COPCO XAS185KD7** SN:HOP054487 powered by diesel engine, equipped with 185CFM, trailer mounted.

**2015 DOOSAN P425/HP375WCUT4** SN:469325UAZF15 powered by Cummins diesel engine, equipped with 425CFM, trailer mounted.

**2015 DOOSAN P425/HP375WCUT4** SN:470330UDZF15 powered by Cummins diesel engine, equipped with 425CFM, trailer mounted.

**2016 DOOSAN C185WKU-T4I** SN:478715UKAAF08 powered by diesel engine, equipped with 185CFM, trailer mounted.

**2016 DOOSAN C185WKU-T4I** SN:477037UFAAF08 powered by diesel engine, equipped with 185CFM, trailer mounted.

**2017 SULLAIR 185DPQ-KU-T3** SN:201706070046 powered by diesel engine, equipped with 185CFM, trailer mounted.

**2017 SULLAIR 185DPQ-KU-T3** SN:201704200043 powered by diesel engine, equipped with 185CFM, trailer mounted.

### 4 GENERATORS

**2017 MAGNUM PRO MMG45IF4** SN:3001800727 powered by diesel engine, equipped with 45KVA, trailer mounted.

**2018 MULTIQUIP DCA25SSIU4F** SN:7154778 powered by diesel engine, equipped with 25KVA, trailer mounted.

**2018 WACKER G25 T4F** SN:24459040 powered by diesel engine, equipped with 25KVA, trailer mounted.

**2018 WACKER G25 T4F** SN:24455688 powered by diesel engine, equipped with 25KVA, trailer mounted.

### 8 WELDERS

**2015 LINCOLN VANTAGE 520** SN:U1150300030 powered by diesel engine, equipped with 500AMPS, trailer mounted.

**2016 LINCOLN VANTAGE 520** SN:U1160302316 powered by diesel engine, equipped with 500AMPS, trailer mounted.

**2019 LINCOLN VANTAGE 322** SN:U0190200152 equipped with 300AMPS, trailer mounted.

**2018 LINCOLN VANTAGE 300** SN:U1180500255 equipped with 300AMPS, trailer mounted.

**2019 MILLER BIG BLUE 400PRO** SN:MK340584R powered by diesel engine, equipped with 400AMPS, trailer mounted.

**2019 MILLER BIG BLUE 400PRO** SN:MK010484R powered by diesel engine, equipped with 400AMPS, trailer mounted.

**2019 MILLER BIG BLUE 400PRO** SN:1R91A1016KA820950 powered by diesel engine, equipped with 400AMPS, trailer mounted.

**2019 MILLER BIG BLUE 300R** SN:907732002 equipped with 300AMPS, trailer mounted.

### LIGHT PLANTS

**(2) NEW UNUSED GENERAC LINK T3** powered by diesel engine, equipped with 4-1,000 watt lightbulbs, 6KW, trailer mounted.

### WATER PUMP

**THOMPSON 6IN. DRY PRIME VACUUM ASSIST**

### EXCAVATOR THUMBS

**(2) NEW TERAN & TROJAN THUMBS** to fit various model & size excavators. (Please Refer to lyonauction.com for detailed listing).

### 12 EXCAVATOR BUCKETS

**(12) NEW TERAN & TROJAN BUCKETS** ranging from 60in. To 12in., to fit various model & size excavators. (Please Refer to lyonauction.com for detailed listing).

### TAGALONG TRAILER



**NEW 2025 DELTA 27TB 20FT.** equipped with 16ft. Tilt deck, 4ft. Fixed deck, 14,000lb capacity, (2) 7,000lb axles, 235/80R16 tires, HD jack, adjustable hitch, chain storage, LED lights, tandem axle.

### 3 LED BILLBOARD SIGNS



**NEW 10FT. X 30FT.**  
**NEW 8FT. X 16FT. LED SIGN** brand new in the box.  
**NEW 8FT. X 16FT.**

### ALSO SELLING ON DAY 5

Please refer to lyonauction.com for an up-to-date listing.  
 MINI TIRED LOADERS  
 MINI TRACKED DUMPERS  
 OVER 100 LOTS OF SKID STEER ATTACHMENTS  
 TAGALONG TRAILERS  
 DUMP TRAILERS  
 MULTI-USE CONTAINERS  
 CONTAINERS  
 OFFICE CONTAINER  
 MOBILE HOUSE  
 PORTABLE BATHROOM STATIONS  
 STORAGE BUILDINGS  
 SCRAP RECYCLING EQUIPMENT  
 UTILITY VEHICLES  
 GOLF CARTS  
 RECREATIONAL VEHICLES  
 BOUNCE HOUSES  
 PARTY RENTAL TENTS  
 PRESSURE WASHERS  
 OVER 200 LOTS OF NEW SUPPORT EQUIPMENT  
 WHOLE HOUSE GENERATORS



# DAY 6

## WEDNESDAY, FEBRUARY 5

Rough Terrain Cranes, Carry Deck Cranes, Truck Cranes, Tower Cranes, Crawler Cranes, Hydraulic Pile Drivers, Crane Accessories, Telescopic & Straight Mast Forklifts, Warehouse Forklifts, Skid Steers, Rubber Tracked Skid Steers, Log Skidders, Forestry Equipment, Recycling & Aggregate Equipment, Service Trucks, Fuel & Lube Trucks, Fuel & Lube Trailers, Digger Derrick Trucks, Boom Trucks, Several Mini & Midi Hydraulic Excavators, Skid Steer Attachments, Generators, Several New Detachable & Tagalong Trailers, Containers (Storage & Cargo), Utility Vehicles, Recreational Vehicles, New Tools & Support Equipment (Small Amount).

### 81 TELESCOPIC FORKLIFTS



**(3) NEW UNUSED SKYTRAK 12054** 4x4, powered by diesel engine, 110hp, equipped with EROPS, air, 12,000lb lift capacity, 54ft. Reach height, front stabilizers, work light package, 72in. carriage, 60in. pallet forks, foam filled rubber. Factory Warranty.



**(4) NEW UNUSED SKYTRAK 10054** 4x4, powered by Cummins diesel engine, 110hp equipped with EROPS, air, heat, 10,000lb lift capacity, 54ft. Reach height, front stabilizers, 72in. Carriage, 400/75-28 Duraforce rubber, 60in. Forks. Factory Warranty.

**2016 SKYTRAK 10054** SN:160076003 4x4, powered by diesel engine, equipped with OROPS, 10,000lb lift capacity, 54ft. Reach height, front stabilizers.

**SKYTRAK 10042** SN:160037834 4x4, powered by diesel engine, equipped with OROPS, 10,000lb lift capacity, 42ft. Reach height.

**(4) NEW UNUSED SKYTRAK 8042** 4x4, powered by diesel engine, 74hp, equipped with EROPS, air, heat, 8,000lb lift capacity, 42ft. Reach height, 60in. Forks, 72in. Carriage, foam filled rubber.

**2016 SKYTRAK 8042** SN:160077562 4x4, powered by diesel engine, equipped with OROPS, 8,000lb lift capacity, 42ft. Reach height.

Please refer to [lyonauction.com](http://lyonauction.com) for an up-to-date listing.



**(2) NEW UNUSED SKYTRAK 6042** 4x4, powered by diesel engine, equipped with EROPS, heat, 6,000lb lift capacity, 42ft. Reach height, 60in. Carriage, 48in forks. Factory Warranty.



**(2) 2015 SKYTRAK 6042** 4x4, powered by diesel engine, equipped with OROPS, 6,000lb lift capacity, 42ft. Reach height.

**(4) 2016 SKYTRAK 6036** 4x4, powered by diesel engine, equipped with OROPS, 6,000lb lift capacity, 36ft. Reach height.



**2020 JLG 1732** SN:160102747 4x4, powered by diesel engine, equipped with EROPS, air, heat, multi-function display with reverse camera, 17,000lb lift capacity, 32ft. Reach height, 17.5-25 L2 rubber, 2,763 hours.



**(3) 2021 JLG 1255** SN:160109380 4x4, powered by diesel engine, equipped with EROPS, air, heat, 12,000lb lift capacity, 55ft. Reach height, front stabilizers.



**2016 JLG 1255** SN:160078058 4x4, powered by diesel engine, equipped with OROPS, 12,000lb lift capacity, 55ft. Reach height, front stabilizers.



**JLG G12-55A** SN:160063738 4x4, powered by diesel engine, equipped with EROPS, air, heat, 12,000lb lift capacity, 55ft. Reach height, front stabilizers.

**2016 JLG 1055** SN:160075366 4x4, powered by diesel engine, equipped with OROPS, 10,000lb lift capacity, 55ft. Reach height, front stabilizers.



**JLG 43A** SN:160024677 4x4, powered by diesel engine, equipped with OROPS, 9,000lb lift capacity, 43ft. Reach height, 13.00 x 24 rubber.

**(2) NEW UNUSED JLG 742** 4x4, powered by diesel engine, equipped with OROPS, 7,000lb lift capacity, 42ft. Reach height, 72in. Carriage, 60in. Forks, foam filled rubber. Factory Warranty.

**(2) 2019 JLG 6042** 4x4, powered by diesel engine, equipped with EROPS, air, heat, 6,000lb lift capacity, 42ft. Reach height.

**2015 JLG G6-42A** SN:160065720 4x4, powered by diesel engine, equipped with OROPS, 6,000lb lift capacity, 42ft. Reach height.

**2015 JLG G6-42A** SN:160066215 4x4, powered by diesel engine, equipped with OROPS, 6,000lb lift capacity, 42ft. Reach height.

**(5) NEW UNUSED JLG G5-18AA** 4x4, powered by diesel engine, equipped with EROPS, heat, 5,000lb lift capacity, 18ft. Reach height, skid steer style coupler. Factory Warranty.

**CAT TL1255D** SN:TBN00397 4x4, powered by Cat diesel engine, equipped with EROPS, air, heat, 12,000lb lift capacity, 55ft. Reach height, front stabilizers.

**(2) 2016 JCB 510-56** 4x4, powered by diesel engine, equipped with OROPS, 10,000lb lift capacity, 56ft. Reach height, front stabilizers.

**(5) 2015 JCB 510-56** 4x4, powered by diesel engine, equipped with OROPS, 10,000lb lift capacity, 56ft. Reach height, front stabilizers.

**2015 JCB 550-170** SN:2345820 4x4, powered by diesel engine, equipped with OROPS, 10,000lb lift capacity, 54ft. Reach height, front stabilizers.

**(2) 2015 JCB 509-42 S** 4x4, powered by diesel engine, equipped with OROPS, 9,000lb lift capacity, 42ft. Reach height.

**2016 JCB 507-42** SN:2434173 4x4, powered by diesel engine, equipped with OROPS, 7,000lb lift capacity, 42ft. Reach height.

**(6) 2015 JCB 507-42** 4x4, powered by diesel engine, equipped with OROPS, 7,000lb lift capacity, 42ft. Reach height.

**(3) JCB 507-42** 4x4, powered by diesel engine, equipped with OROPS, 7,000lb lift capacity, 42ft. Reach height.



(3) **JCB 506-36** 4x4, powered by diesel engine, equipped with OROPS, 6,000lb lift capacity, 36ft. Reach height.

**2019 JCB 525-60T4** SN:2366194 4x4, powered by diesel engine, equipped with EROPS, 5,500lb lift capacity.

**2017 JCB 525-60** SN:2457306 4x4, powered by diesel engine, equipped with OROPS, 5,500lb lift capacity, 19ft. Reach height.



(3) **2016 JCB 525-60** 4x4, powered by diesel engine, equipped with OROPS, 5,500lb lift capacity, 19ft. Reach height.

**2016 GENIE GTH-1056** SN:GTH1016E-11252 4x4, powered by diesel engine, equipped with OROPS, 10,000lb lift capacity, 56ft. Reach height, front stabilizers.



**GENIE GTH-844** SN:GTH0813-17844 4x4, powered by diesel engine, equipped with OROPS, 8,000lb lift capacity, 44ft. Reach height.

(2) **2015 GENIE GTH-636** 4x4, powered by diesel engine, equipped with OROPS, 6,000lb lift capacity, 36ft. Reach height.

(3) **2016 GENIE GTH-5519** 4x4, powered by diesel engine, equipped with OROPS, 5,500lb lift capacity, 19ft. Reach height.

**2015 GEHL RS8-42** SN:RS842JG17603 4x4, powered by diesel engine, equipped with OROPS, 8,000lb lift capacity, 42ft. Reach height.

**2015 GEHL RS6-42** SN:RS642JG14980 4x4, powered by diesel engine, equipped with OROPS, 6,000lb lift capacity, 42ft. Reach height.

**DEMO MERLO TF30.9** 4x4, powered by diesel engine, equipped with EROPS, air, heat, 6,600lb capacity, 28ft. reach height, 3-way steer, Forks & GP bucket, 170 hours.



**LULL 1044C-54** SN:1150 4x4, powered by diesel engine, equipped with OROPS, 10,000lb lift capacity, 44ft. Reach height, front stabilizers, 14.00 x 24 rubber.

## 52 RUBBER TRACKED SKID STEERS



(10) **2024 CAT 299D3** powered by Cat diesel engine, equipped with EROPS, air, heat, 2-speed, high flow auxiliary hydraulics, quick coupler, rubber tracks, 86in. Cat GP bucket. 24 month 2,000 hour full cover Cat Warranty.

**2020 CAT 299D3 XE** SN:BX901025 powered by Cat diesel engine, equipped with EROPS, air, heat, high flow auxiliary hydraulics, hydraulic quick coupler, rubber tracks, Mulching machine, 2,361 hours.



**2018 CAT 299D2** SN:FD203520 powered by Cat diesel engine, equipped with rollcage, auxiliary hydraulics, mechanical quick coupler, GP bucket, 2,320 hours.



**2018 CAT 299D2** SN:FD204061 powered by Cat diesel engine, equipped with rollcage, auxiliary hydraulics, mechanical quick coupler, GP bucket, 2,153 hours.



**2021 CAT 289D3** SN:JX904879 powered by Cat diesel engine, equipped with EROPS, air, heat, 2-speed, ride control, auxiliary hydraulics, hydraulic quick coupler, GP bucket, 2,125 hours. Forks Sell Separately.



**2023 CAT 279D3** powered by Cat diesel engine, equipped with EROPS, air, heat, 2-speed, backup camera, ride control, auxiliary hydraulics, hydraulic quick coupler, GP bucket, 818 hours. Forks Sell Separately.

(5) **2019 CAT 259D** powered by Cat diesel engine, equipped with rollcage, auxiliary hydraulics, mechanical quick coupler, rubber tracks, GP bucket.

**2023 BOBCAT T770** powered by diesel engine, equipped with EROPS, air, heat, 2-speed, joystick control, auxiliary hydraulics, hydraulic quick coupler, attachment control kit wiring, ride control, 18in. rubber tracks, 80in. HD LP bucket, 175 hours.

**2019 BOBCAT T770** SN:AT6322046 powered by diesel engine, 92hp, equipped with EROPS, air, heat, 2-speed, auxiliary hydraulics, hydraulic quick coupler, 18in. Rubber tracks, 80in. GP bucket.

(2) **2017 BOBCAT T770** powered by diesel engine, equipped with rollcage, auxiliary hydraulics, mechanical quick coupler, rubber tracks, GP bucket.

**2019 BOBCAT T740** SN:B3CA15533 powered by diesel engine, 74hp, equipped with EROPS, air, heat, 2-speed, auxiliary hydraulics, hydraulic quick coupler, 18in. Rubber tracks, 80in. GP bucket.

**2019 BOBCAT T630** SN:ADJT16418 powered by diesel engine, 74hp, equipped with rollcage, auxiliary hydraulics, hydraulic quick coupler, 18in. Rubber tracks, 80in. GP bucket.

**2019 BOBCAT T595** SN:B3NK34802 powered by diesel engine, 74hp, equipped with rollcage, 2-speed, auxiliary hydraulics, mechanical quick coupler, 16in. Rubber tracks, GP bucket, 1,400 hours.

**2016 BOBCAT T550** SN:AJZV15883 powered by diesel engine, equipped with rollcage, auxiliary hydraulics, mechanical quick coupler, rubber tracks, GP bucket.

**2022 BOBCAT T450** powered by diesel engine, equipped with rollcage, 2-speed, auxiliary hydraulics, hydraulic quick coupler, LP bucket, 630 hours.

**BOBCAT T180** powered by diesel engine, equipped with rollcage, auxiliary hydraulics, mechanical quick coupler, 12in. Rubber tracks, 68in. GP bucket.



**2022 BOBCAT T76** powered by diesel engine, 74hp, equipped with rollcage, 2-speed, auxiliary hydraulics, hydraulic quick coupler, 18in. Rubber tracks, 80in. GP bucket, 650 hours.

**2021 BOBCAT T76** SN:B4CE15949 powered by diesel engine, 74hp, equipped with rollcage, 2-speed, auxiliary hydraulics, hydraulic quick coupler, 18in. Rubber tracks, 80in. GP bucket.

**Pre-bidding Open for all days!**



**2020 BOBCAT T76** SN:B4CE1279 powered by diesel engine, 74hp, equipped with rollcage, auxiliary hydraulics, mechanical quick coupler, 18in. Rubber tracks, 80in. GP bucket.

**2022 BOBCAT T66** powered by diesel engine, equipped with EROPS, air, heat, 2-speed, deluxe 7in. dash w/ stereo, backup camera, selectable joystick controls, auxiliary hydraulics, hydraulic quick coupler, new rubber tracks, LP bucket, 2,200 hours.

**2020 BOBCAT T66** SN:B45B12970 powered by diesel engine, 74hp, equipped with rollcage, auxiliary hydraulics, mechanical quick coupler, New 12in. Rubber tracks, 68in. GP bucket.

**2020 BOBCAT T66** SN:B45B11153 powered by diesel engine, 74hp, equipped with EROPS, air, heat, 2-speed, auxiliary hydraulics, hydraulic quick coupler, 12in. Rubber tracks, 68in. GP bucket.



**(3) 2021 KUBOTA SVL97-2HFC** powered by Kubota diesel engine, equipped with EROPS, air, heat, high flow auxiliary hydraulics, hydraulic quick coupler, rubber tracks, GP bucket.

**2016 KUBOTA SVL95-2S** SN:31101 powered by Kubota diesel engine, equipped with rollcage, auxiliary hydraulics, mechanical quick coupler, rubber tracks, GP bucket.

**2015 KUBOTA SVL90-2** SN:15052 powered by Kubota diesel engine, equipped with rollcage, auxiliary hydraulics, mechanical quick coupler, rubber tracks, GP bucket.

**2017 KUBOTA SVL75-2** SN:29404 powered by Kubota diesel engine, equipped with rollcage, auxiliary hydraulics, mechanical quick coupler, rubber tracks, GP bucket.

**2016 KUBOTA SVL75-2** SN:26416 powered by Kubota diesel engine, equipped with rollcage, auxiliary hydraulics, mechanical quick coupler, rubber tracks, GP bucket.

**(2) 2019 TAKEUCHI TL8** powered by diesel engine, equipped with rollcage, auxiliary hydraulics, mechanical quick coupler, rubber tracks, GP bucket.

**(7) 2017 TAKEUCHI TL8W** powered by diesel engine, equipped with rollcage, auxiliary hydraulics, mechanical quick coupler, rubber tracks, GP bucket.

**Pre-bidding Open  
for all days!**

**Please refer to [lyonauction.com](http://lyonauction.com)  
for an up-to-date listing.**

## 8 SKID STEERS

**NEW UNUSED KUBOTA SSL65** powered by Kubota diesel engine, equipped with EROPS, air, heat, 2-speed, auxiliary hydraulics, hydraulic quick coupler, 74in. Bradco LP bucket.



**2022 CAT 272D3** powered by Cat diesel engine, equipped with EROPS, air, heat, 2-speed, high flow XPS auxiliary hydraulics, hydraulic quick coupler, extra counterweights, 80in. GP bucket, 1,352 hours.



**2022 CAT 272D3** powered by Cat diesel engine, equipped with EROPS, air, heat, 2-speed, ride control, high flow XPS auxiliary hydraulics, hydraulic quick coupler, extra counterweights, 80in. GP bucket, 2,060 hours.



**2022 CAT 272D3** powered by Cat diesel engine, equipped with EROPS, air, heat, 2-speed, ride control, high flow XPS auxiliary hydraulics, hydraulic quick coupler, extra counterweights, 80in. GP bucket, 1,881 hours.

**2021 CAT 262D3** SN:ZB203380 powered by Cat diesel engine, equipped with EROPS, air, heat, 2-speed, high flow auxiliary hydraulics, hydraulic quick coupler, 74in. GP bucket, 12-16.5 HD rubber.



**2024 DEMO CAT 226D3** powered by Cat diesel engine, equipped with rollcage, auxiliary hydraulics, mechanical quick coupler, GP bucket, 48 hours.



**2019 CASE SR210** SN:KM472093 powered by diesel engine, equipped with rollcage, 2-speed, auxiliary hydraulics, hydraulic quick coupler, forks, 3,649 hours.



**2018 CASE SR210** SN:JM443841 powered by diesel engine, equipped with rollcage, auxiliary hydraulics, hydraulic quick coupler, forks, 3,016 hours.

## 3 MINI TRACK LOADERS

**2023 KUBOTA SCL1000** powered by Kubota diesel engine, equipped with auxiliary hydraulics, mechanical quick coupler, rubber tracks, 44in. GP bucket, 180 hours.

**(2) NEW EGN EG360T** powered by gas engine, 15hp, equipped with auxiliary hydraulics, mechanical quick coupler, 7in. rubber tracks, 40in. GP bucket.

## 85 SKID STEER ATTACHMENTS

**(16) NEW PALADIN STRIKEFORCE SFB 500** carrier weight: 5,070-13,227lb machines.

**(3) NEW PALADIN STRIKEFORCE SFB 350** carrier weight: 4,400-6,900lb machines.

**(7) NEW PALADIN STRIKEFORCE SFB 250** carrier weight: 2,200-6,600lb machines.

**UNUSED JOHN DEERE MH60C MULCHER**  
**2024 BOBCAT FORESTRY 61IN. MULCHING HEAD** SN:57L00309 with knockdown bar, 2 speed, like new.

**2021 BOBCAT 8B WOOD CHIPPER** SN:A02B00854

**2018 BOBCAT 40IN. PLANNER** SN:991402730 high flow.

**BOBCAT FLAIL MOWER**

**(5) NEW TERAN THH400B HYDRAULIC HAMMER** for Skid Steer Loader CAT 226/299 WITH MOUNTING PLATE INCLUDED - 68MM Tool with Auto - Lubrication Pre-Disposition. - All New Teran Hydraulic Hammers are supplied with: Chisel "Moil Point "M" Type", 2 Hoses, 1 Set of N2 Nitrogen Charging Kit with N2 Bottle and Pressure Gauge, 1 Spare Seal Kit, Tool Box with Maintenance Tools and Operations Manual.

**(2) NEW TERAN 78IN. GP BUCKET** for CAT 226/299 WITH 8HD TIPS.

**(3) NEW TERAN 72IN. GP BUCKET** for CAT 226/299 WITH 8HD TIPS.

**NEW TERAN 72IN. GP BUCKET** for CAT 226/299 with BOCE.

**(2) NEW TERAN 60IN. GP BUCKET** for CAT 226/299 WITH 7HD TIPS.



**NEW TERAN 60IN. GP BUCKET** for CAT 226/299 with BOCE.

**NEW STOUT HD72-8 BRUSH GRAPPLE**  
**NEW STOUT HD72-4 BRUSH GRAPPLE**  
**NEW STOUT 72-3B ROCK GRAPPLE**  
**NEW STOUT 66-9 BRUSH GRAPPLE**



**(2) NEW GREATBEAR 84IN. HYDRAULIC ROCK BUCKET**

**(2) NEW GREATBEAR 78IN. HYDRAULIC ROCK BUCKET**

**(2) NEW GREATBEAR 78IN. FORK GRAPPLE**

**(2) NEW GREATBEAR 72IN. HYDRAULIC ROCK BUCKET**

**(2) NEW GREATBEAR 66IN. HYDRAULIC ROCK BUCKET**

**(2) NEW 84IN. SNOW/LITER BUCKET**

**(2) NEW 84IN. LIGHT DUTY FORK EXTENSIONS**

**(2) NEW 76IN. SKELETON HIGH SIDE BUCKET**

**(2) NEW 76IN. SKELETON LP BUCKET**

**(2) NEW 72IN. FINE SKELETON HIGH SIDE BUCKET**

**(2) NEW 66IN. GP BUCKET W/ SINGLE**

**(2) NEW 40IN. SPADE BUCKET**

**NEW 3/4 YARD CONCRETE PLACEMENT BUCKET**

**(2) NEW TREE BOOM**

**(2) NEW 2IN. RECEIVER HITCH**

**(7) NEW FORMED FRAME**

### 11 MINI TRACK LOADER ATTACHMENTS

**(3) NEW 45IN. FORK FRAME W/ 42IN. FORKS**  
**(8) NEW 1/4IN. SKID STEER FRAME**

### 15 HYDRAULIC EXCAVATORS



**2020 CAT 308** SN:GG802474 powered by Cat diesel engine, equipped with Cab, air, heat, front blade, rubber tracks, digging bucket, 3,542 hours.

**(3) 2019 CAT 305.5** powered by Cat diesel engine, equipped with OROPS, front blade, rubber tracks, quick coupler, digging bucket w/ thumb, 800 hours.

**2019 JOHN DEERE 75G** SN:16803 powered by John Deere diesel engine, equipped with Cab, front blade, rubber tracks, digging bucket.



**2022 XCMG XE75U** SN:UVMKA00039 powered by Kubota V2607 diesel engine, 60.3hp, equipped with Cab, air, heat, front blade, auxiliary hydraulics, steel track w/ rubber inserts, digging bucket, 104 hours.



**2022 XCMG XE55U** SN:UAMKA00262 powered by Kubota diesel engine, equipped with OROPS, blade, swing boom, auxiliary hydraulics, rubber tracks, coupler hydraulics, bucket, 205 hours.

**TAKEUCHI TB290CR** SN:201001657 powered by diesel engine, equipped with Cab, air, heat, front blade, rubber tracks, reduced tail swing, digging bucket.

**2019 TAKEUCHI TB230** SN:130005544 powered by diesel engine, equipped with OROPS, front blade, auxiliary hydraulics, rubber tracks, digging bucket.

**2021 SANY SY60C** powered by diesel engine, equipped with OROPS, front blade, rubber tracks, quick coupler, digging bucket w/ thumb, 600 hours.

**NEW UNUSED CASE CX37C** powered by diesel engine, equipped with Cab, air, heat, 2-speed, pattern changer, front blade, 2-way auxiliary hydraulics, additional counterweight, rubber tracks, Wain Roy coupler, 24in. digging bucket w/ hydraulic thumb.

**2016 BOBCAT E32** SN:AUYJ11859 powered by Kubota diesel engine, 49hp, equipped with OROPS, front blade, auxiliary hydraulics, rubber tracks, digging bucket, 2,735 hours.



**NEW MIVA VA15** powered by gas engine, equipped with EROP, auxiliary hydraulics, front blade, 16in. Digging bucket.



**(2) NEW MIVA VA13C** powered by gas engine, equipped with EROP, auxiliary hydraulics, front blade, 16in. Digging bucket.

### 7 HYDRAULIC HAMMERS

**(7) NEW TERAN & PALADIN HYDRAULIC HAMMERS** to fit various model & size excavators. (Please Refer to [lyonauction.com](http://lyonauction.com) for detailed listing).

### GRAPPLES

**(2) NEW TERAN GRAPPLES** to fit various model & size excavators. (Please Refer to [lyonauction.com](http://lyonauction.com) for detailed listing).

### 9 EXCAVATOR RIPPERS

**(9) NEW TERAN RIPPERS** to fit various model & size excavators. (Please Refer to [lyonauction.com](http://lyonauction.com) for detailed listing).

### 8 EXCAVATOR THUMBS

**(8) NEW TERAN & TROJAN THUMBS** to fit various model & size excavators. (Please Refer to [lyonauction.com](http://lyonauction.com) for detailed listing).

### 48 EXCAVATOR BUCKETS

**(48) NEW TERAN & TROJAN BUCKETS** ranging from 60in. To 12in., to fit various model & size excavators. (Please Refer to [lyonauction.com](http://lyonauction.com) for detailed listing).

### 6 FORKLIFTS



**NEW HELI CPYD25** SN:6548 powered by LP engine, equipped with OROPS, 5,000lb lift capacity, 185in. 3-stage mast, sideshift, 42in. Solid pneumatic tires.



**NEW HELI CPYD25** SN:6541 powered by LP engine, equipped with OROPS, 5,000lb lift capacity, 185in. 3-stage mast, sideshift, 42in. Solid pneumatic tires.

**2020 CAT GP25NS** SN:AT35A08463 powered by diesel engine, equipped with OROPS, 5,000lb lift capacity, 3-stage mast, 189in. Reach height, 952 hours.

**2020 CAT GP25NS** SN:AT35A08433 powered by diesel engine, equipped with OROPS, 5,000lb lift capacity, 3-stage mast, 189in. Reach height, 1,332 hours.

**2020 CAT GP25NS** SN:AT3508461 powered by diesel engine, equipped with OROPS, 5,000lb lift capacity, 3-stage mast, 189in. Reach height, 990 hours.



**2018 DOOSAN G25P-5** SN:5412 powered by duel fuel engine, equipped with OROPS, 5,000lb lift capacity.



## SCREENING PLANT

**NEW UNUSED MCCLUSKEY EDS-7000** powered by diesel engine, equipped with diesel Kohler 55KW, variable speed controls, radio remote control, disc screen, 44in. feed conveyor, 39in. left, right, and end discharge conveyors, 16in. TBG pads, 12 hours.

## PUGMILL

KOLBERG

## CEMENT SILO

BELGRADE

## CONVEYORS & STACKER

LB SMITH 60FT. STACKING CONVEYOR

## SLOPE MOWER

**2019 GREEN CLIMBER LV600** SN:77 powered by diesel engine, equipped with auxiliary hydraulics, mechanical quick coupler, expandable rubber tracks, 269 hours. Remote in office.

## HYDRO AXE

**HYDRO AX 621E** SN:5611 powered by diesel engine, equipped with EROPS, air, heat, Brush Cutter.

## FORESTRY EQUIPMENT

**2020 LAMTRAC LTR6170-T** SN:6C170CT03F6 powered by Cummins diesel engine, equipped with EROPS, air, heat, 17.5in. rubber tracks, 199 hours.

## CURB MACHINE

**GOMACO** powered by Cummins diesel engine.

## 5 TRACTOR LOADER BACKHOE ATTACHMENTS

**(2) NEW TERAN THH400B HYDRAULIC HAMMER** for Backhoe JD310G/410G - 68MM Tool with Auto - Lubrication Pre-Disposition. - All New Teran Hydraulic Hammers are supplied with: Chisel "Moil Point 'M' Type", 2 Hoses, 1 Set of N2 Nitrogen Charging Kit with N2 Bottle and Pressure Gauge, 1 Spare Seal Kit, Tool Box with Maintenance Tools and Operations Manual.

**(3) NEW TERAN THH400BH HYDRAULIC HAMMER** for Backhoe Loaders CAT 416/428/444 -68MM Tool with Auto - Lubrication Pre-Disposition. - All New Teran Hydraulic Hammers are supplied with: Chisel "Moil Point 'M' Type", 2 Hoses, 1 Set of N2 Nitrogen Charging Kit with N2 Bottle and Pressure Gauge, 1 Spare Seal Kit, Tool Box with Maintenance Tools and Operations Manual.

### Over 1,000 Attachments! Selling All Days!

Every Size & Style that exists will be at this sale!

**BRANDS INCLUDE: CAT, KOMATSU, VOLVO, JOHN DEERE, KOBELCO, SANY, DOOSAN, BOBCAT, NEW HOLLAND, STRICKLAND, GEITH, MILLER, INDECO, EPIROC, RAMMER, NPK, BODINE, GENTEC, TERAN, TROJAN, MIDSTATE, GREATBEAR, WOLVERINE, MOWER KING, WILDKAT, TOP CAT, STOUT & MORE!**

Please refer to [lyonauction.com](http://lyonauction.com) for an up-to-date listing.

## 18 SERVICE TRUCKS



**NEW UNUSED FORD F600XL** 4x4, H7024TT 7,000 lb. all Hyd. Crane; 11ft. to 24ft. Hyd. Boom w/ Wireless Remote. 22,000 GVW Package. ; Ford Diesel Engine w/ 10-Speed Automatic Trans. ; 161in. Wheelbase,AM/FM Radio, A/C, Custom Interior, ; Body Model # MTS-1-084 ; Hyd Rear Outriggers, Vanair RC40 Hyd Air ; Compressor, 2 Stage 40 cfm@100 ; PSI/40cfm@150PSI ; 3/8 X 30ft. Air Accessory Pkg. ; Ext.Tailgate Rear of Bed Hinge down (4) flush mount tie downs ; (5) 15in. X 4 Rollout Drawers / (7) Drawer Set 29in. X 18 Deep: (1)@7in., (3)@5in., (3)@3in. ; Oxy-Act. Bottle Compartment ; Adj Shelving,Vise mount, 20 Gal Air Tank, Ext.Light ; Pkg. Workbench Bumper. ; Power Windows, Power Locks, Back Up Camera ; AM/FM Stereo, CD Player, Cruise Control ; Telescopic Mirrors, Chrome Bumper.



**NEW UNUSED FORD F600XL** 4x4, H7024TT 7,000 lb. all Hyd. Crane; 11ft. to 24ft. Hyd. Boom w/ Wireless Remote. 22,000 GVW Package. ; Ford Diesel Engine w/ 10-Speed Automatic Trans. ; 161in. Wheelbase,AM/FM Radio, A/C, Custom Interior, ; Body Model # MTS-1-084, 2x 50 Gallon Oil Tanks, 1x 50 Gallon Evac. Tank ; Hyd Rear Outriggers, Vanair RC40 Hyd Air ; Compressor, 2 Stage 40 cfm@100 ; PSI/40cfm@150PSI ; 3/8 X 30ft. Air Accessory Pkg. ; Ext.Tailgate Rear of Bed Hinge down (4) flush mount tie downs ; (5) 15in. X 4 Rollout Drawers / (7) Drawer Set 29in. X 18 Deep: (1)@7in., (3)@5in., (3)@3in. ; Oxy-Act. Bottle Compartment ; Adj Shelving,Vise mount, 20 Gal Air Tank, Ext.Light ; Pkg. Workbench Bumper. ; Power Windows, Power Locks, Back Up Camera ; AM/FM Stereo, CD Player, Cruise Control ; Telescopic Mirrors, Chrome Bumper.



**2023 FORD F600XL** 4x4, H7024TT 7,000 lb. all Hyd. Crane; 11ft. to 24ft. Hyd. Boom w/ Wireless Remote. 22,000 GVW Package. ; Ford Diesel Engine w/ 10-Speed Automatic Trans. ; 161in. Wheelbase,AM/FM Radio, A/C, Custom Interior, ; Body Model # MTS-1-084, 2x 50 Gallon Oil Tanks, 1x 50 Gallon Evac. Tank ; Hyd Rear Outriggers, Vanair RC40 Hyd Air ; Compressor, 2 Stage 40 cfm@100 ; PSI/40cfm@150PSI ; 3/8 X 30ft. Air Accessory Pkg. ; Ext.Tailgate Rear of Bed Hinge down (4) flush mount tie downs ; (5) 15in. X 4 Rollout Drawers / (7) Drawer Set 29in. X 18 Deep: (1)@7in., (3)@5in., (3)@3in. ; Oxy-Act. Bottle Compartment ; Adj Shelving,Vise mount, 20 Gal Air Tank, Ext.Light ; Pkg. Workbench Bumper. ; Power Windows, Power Locks, Back Up Camera ; AM/FM Stereo, CD Player, Cruise Control ; Telescopic Mirrors, Chrome Bumper.



**NEW UNUSED FORD F550XL** 4x4, H6520 6,500 lb. all ; Hyd.Crane,12ft. to 20ft. Hyd. Boom,wireless remote ; Ford Diesel Engine w/ Automatic Trans. ; 161in. Wheelbase,AM/FM Radio, A/C, Custom Interior, ; Body Mdl# MTS-1-084 ; Hyd Rear Outriggers, Vanair RC40 Hyd Air ; Compressor, 2 Stage 40 cfm@100 ; PSI/40cfm@150PSI ; 3/8 X 30ft. Air Accessory Pkg. ; Ext.Tailgate Rear of Bed Hinge down (4) flush mount tie downs. (5) 15in. X 4 Rollout Drawers, oxy-act. ; Bottle Compartment ; Adj Shelving,Vise mount, 20 Gal Air Tank, Ext.Light ; Pkg. Workbench Bumper. ; Power Windows, Power Locks, Back Up Camera ; AM/FM Stereo, CD Player, Cruise Control ; Telescopic Mirrors, Chrome Bumper.



**NEW UNUSED FORD F550XL** 4x4, H6520 6,500 lb. all ; Hyd.Crane,12ft. to 20ft. Hyd. Boom,wireless remote ; Ford Diesel Engine w/ Automatic Trans. ; 161in. Wheelbase,AM/FM Radio, A/C, Custom Interior, ; Body Mdl# MTS-1-084 ; Hyd Rear Outriggers, Vanair RC40 Hyd Air ; Compressor, 2 Stage 40 cfm@100 ; PSI/40cfm@150PSI ; 3/8 X 30ft. Air Accessory Pkg. ; Ext.Tailgate Rear of Bed Hinge down (4) flush mount tie downs. (5) 15in. X 4 Rollout Drawers, oxy-act. ; Bottle Compartment ; Adj Shelving,Vise mount, 20 Gal Air Tank, Ext.Light ; Pkg. Workbench Bumper. ; Power Windows, Power Locks, Back Up Camera ; AM/FM Stereo, CD Player, Cruise Control ; Telescopic Mirrors, Chrome Bumper.



**(2) NEW UNUSED FORD F550XL** 4x4, powered by 6.7L Powerstroke diesel engine, equipped with automatic transmission, power windows, locks and mirrors, Maintainer service body, Maintainer IMT7500 6,700lb crane, 22ft. reach height, air compressor, hydraulic outriggers, dual wheel single axle. FET has been paid. Factory Warranty will start on the date of purchase, call main office for paperwork(post sale).





**2019 FORD F350** VN:C44587 4x4, powered by gas engine, equipped with automatic transmission, power steering, crew cab, service body, 179,000 miles.



**2013 FORD F350** VN:A69310 powered by gas engine, equipped with automatic transmission, power steering, service body, 148,770 miles.



**2002 FORD F350XL** VN:B04616 powered by 7.3L diesel engine, equipped with automatic transmission, power steering, 4-door, service body, Lift Moore 3200 crane, Generac GP3300, rear vice, dual wheels.

**2019 FORD F250** VN:1FT7W2B64KEE39170 4x4, powered by gas engine, equipped with automatic transmission, power steering, crew cab, service body, 256,879 miles.



**2019 FORD F250** VN:C81326 4x4, powered by 6.7L Power stroke diesel engine, equipped with automatic transmission, power steering, crew cab, service body, 172,546 miles.

**2020 KENWORTH T270** VN:377783 powered by Paccar PX7 engine, 300hp, equipped with Allison automatic transmission, air brakes, service body, IMT 10,000lb crane, air compressor, product tanks, hose reels, air ride suspension, aluminum wheels, 11R22.5 tires, dual wheel single axle, 110,000 miles.

**2018 KENWORTH T270** VN:193130 powered by Paccar PX7 engine, 300hp, equipped with Allison automatic transmission, service body, Auto Crane 12,000lb crane, air compressor, Miller Bobcat welder/generator, air ride suspension, aluminum wheels, 11R22.5 tires, dual wheel single axle.



**2015 PETERBILT 337** VN:2NP2HJ7X1FM298377 powered by Paccar PX-9 8.9L diesel engine, 330hp, equipped with Allison automatic transmission, cruise control, a/c, power steering, power windows & locks, 14ft. Stellar service body, Stellar 12630 12,000lb crane w/ remote, Enpak system, tool drawers, air ride suspension, 22.5 tires, dual wheel single axle, 177,609 miles.



**2012 PETERBILT 337** VN:2NP2HN6X9CM150983 powered by Paccar PX-8 8.3L diesel engine, 260hp, equipped with Allison automatic transmission, cruise control, a/c, power steering, power windows & locks, 11FT. IMT service body, IMT 6025 10,000lb crane, Ingersoll Rand air compressor, tool drawers, spring suspension, 22.5 tires, dual wheel single axle, 151,824 miles.



**2021 CHEVY 2500** VN:1GC1YME71MF211057 4x4, powered by gas engine, equipped with automatic transmission, power steering, crew cab, service body, 138,238 miles.



**2017 INTERNATIONAL 4300** powered by Cummins B6.7L diesel engine, 250hp, equipped with Allison automatic transmission, power steering, 13ft. STI Eagle Pro 2 service body, IMT 3816 3-section hydraulic crane, Ingersoll Rand VHP30RMH hydraulic air compressor, PTO, air hose reel, hydraulic stabilizers, air ride suspension, 154in. wheelbase, 295/75R22.5 tires, dual wheel single axle, 151,515 miles.

## FUEL/LUBE TRUCKS



**NEW UNUSED FORD F600XL** 4x4, 1 Ton, All Aluminum PM Lube Truck ; Ford Diesel Engine w/ 10 Speed Automatic Transmission ; 8 Tanks: 250gal Evac, 125gal Hyd, 100gal Water, 50gal Hyd, 50gal AF, 150gal Eng. Oil, 50gal Diesel, 100gal Oil ; Equipped w/ Pressure Washer ; VMAC H40 40CFM Compressor ; 6 Drawer Tool Box ; Electrical Inverter ; Electrical Tool Rack ; 3 Bin Bucket Holder ; Light Bar Mount ; 10x Hose Reels ; 4x Storage Compartments ; Tow Hooks ; Estimated Weight w/ All Oils Filled (less evac, no tools, no filters, w/ driver) 19,500# ; Hydraulic Driven Pumps ; 22,000 GVWR ; No CDL or Hazmat Required



**2024 FORD F550XL** VN:A19922 4x4, powered by Power Stroke diesel engine, equipped with automatic transmission, power windows, locks and mirrors, Thunder Creek MTU fuel & lube body, (8) product tanks & hose reel, pump, dual wheel single axle.

## BOOM TRUCKS

**2016 WESTERN STAR 4800** SB VN:PHM0853 6x6, powered by Detroit Series DD13 diesel engine, 450hp, equipped with Allison RDS 4500 automatic transmission, power steering, a/c, headache rack, 100 gallon aluminum fuel tank, Fassi F360SE24 Scan Tronic boom, 4,410lb lift capacity, 72ft. Reach height, 24ft. 6in. x 96in. aluminum flatbed, air suspension, air brakes, 456/65R22.5 front tires, 11R22.5 rear tires, tandem axle, 270,000 miles.



**2014 WESTERN STAR 4700** VN:5KKHAXDV7ELFY0256 6x6, powered by Detroit Series DD13 diesel engine, 450hp, equipped with Allison RDS 4500 automatic transmission, power steering, a/c, IMT 16000 series III drywall boom, 42ft. reach height, aluminum flatbed, air suspension, air brakes, dual wheel single axle, 251,000 miles.



## DETACHABLE GOOSENECK TRAILER

**NEW UNUSED WITZCO RG52** 104,000# load capacity, 3 axles with 48' overall length. Removable gooseneck, 8'6" wide, level deck style. Ground bearing, 2 angle scraper gooseneck with self-contained hydraulic system. 22' load deck, tapered front beam, 2" lumber decking & (24) 12" outriggers (12 each side). 3 "D" rings per side of deck & 2 on front stumps at tire area. Hutch 9700 spring suspension, 25,000# capacity axles, 16.5" x 7" air brakes, uni-mount wheels with 255/70 R22.5 Radial tires. Modular wire harness, rubber mounted sealed lights, DOT approved. FET APPLIES

## TAGALONG TRAILERS

**(2) NEW 2025 DELTA 27TB 20FT.** equipped with 16ft. Tilt deck, 4ft. Fixed deck, 14,000lb capacity, (2) 7,000lb axles, 235/80R16 tires, HD jack, adjustable hitch, chain storage, LED lights, tandem axle.

## ALSO SELLING ON DAY 6

Please refer to [lyonauction.com](http://lyonauction.com) for an up-to-date listing.

MINI TIRED LOADERS

MINI TRACKED DUMPERS

OVER 100 LOTS OF SKID STEER ATTACHMENTS

TAGALONG TRAILERS

DUMP TRAILERS

MULTI-USE CONTAINERS

CONTAINERS

OFFICE CONTAINER

MOBILE HOUSE

PORTABLE BATHROOM STATIONS

STORAGE BUILDINGS

SCRAP RECYCLING EQUIPMENT

UTILITY VEHICLES

GOLF CARTS

RECREATIONAL VEHICLES

BOUNCE HOUSES

PARTY RENTAL TENTS

PRESSURE WASHERS

OVER 200 LOTS OF NEW SUPPORT EQUIPMENT

WHOLE HOUSE GENERATORS

# DAY 7

## THURSDAY, FEBRUARY 6

Rubber Tired Loaders, Tractor Loader Backhoes, Motor Scrapers, Motor Graders, Articulated Haul Trucks, Straight Haul Trucks, Asphalt & Vibratory Rollers, Paving Equipment, Sweepers/ Vacuum Trucks, Distributor Trucks, Water Trucks, Water Drills, Hydraulic Excavators (20+ All Sizes), Several Detachable & Tagalong Trailers, Utility Vehicles, Recreational Vehicles, Small Generators, Pumps, Landscape Equipment, Survey, New Tools & Support Equipment (Small Amount), Containers, Portable Bathrooms.

## STRAIGHT FRAME HAUL TRUCKS



**2018 CAT 772G** SN:KEX00404 powered by Cat C18, engine, equipped with Cab, air, heat, retarder, Payload Measurement System, auto lube, fast fuel, 52 ton capacity, 21.00R33 rubber.



**2015 CAT 770G** 42.1 Ton ; Air Conditioned Cab w/ Heater ; 18.0R33 Radial Tires ; Flat Floor Body w/ Steel Liner ; Heated Mirrors Weather Package ; Superior Technology Package ; Retarder ; Visibility Camera ; GP-Exhaust Piping.

## 54 ARTICULATED HAUL TRUCKS



**(2) NEW UNUSED BELL B50E** 6x6, powered by Mercedes Benz diesel engine, equipped with Cab, air, heat, Allison automatic transmission, 50 ton capacity, 29.5R25 rubber. New machine warranty. 1-year Full Warranty. 3-year 6,000 hour Power Train. **NEW UNUSED BELL B50** 6x6, powered by Mercedes diesel engine, 577hp, equipped with EROPS, air, heat, 45 ton capacity, Goodyear 875/65R29 rubber. New machine warranty. 1-year Full Warranty. 3-year 6,000 hour Power Train.



**(2) NEW UNUSED BELL B45E** 6x6, powered by Mercedes Benz diesel engine, equipped with Cab, air, heat, Allison automatic transmission, 45 ton capacity, 29.5R25 rubber. New machine warranty. 1-year Full Warranty. 3-year 6,000 hour Power Train.



**2023 BELL B45E** 6x6, powered by Mercedes Benz diesel engine, equipped with Cab, air, heat, Allison automatic transmission, 45 ton capacity, 29.5R25 rubber, 454 hours.

**(6) 2020 BELL B45E** 6x6, powered by diesel engine, equipped with Cab, air, heat, 45 ton capacity, 29.5R25 rubber.



**(2) NEW UNUSED BELL B30E** 6x6, powered by diesel engine, equipped with Cab, air, heat, 30 ton capacity, tailgate, 750/65R25 rubber.



**(3) 2024 BELL B30E** 6x6, powered by diesel engine, equipped with Cab, air, heat, 30 ton capacity, tailgate, 750/65R25 rubber.

**2023 BELL B30E** 6x6, powered by Mercedes Benz diesel engine, equipped with Cab, air, heat, Allison automatic transmission, 30 ton capacity, 23.5R25 rubber, 1,196 hours.

**2017 BELL B25E** SN:2007456 6x6, powered by diesel engine, equipped with Cab, air, heat, 25 ton capacity, 23.5x25 rubber.



**2021 CAT 745** SN:3T603256 6x6, powered by Cat C18 diesel engine, equipped with Cab, air, heat, 45 ton capacity, scissor tailgate, 29.5R25 rubber, 3,685 hours. **2019 CAT 745** SN:3T601649 6x6, powered by Cat diesel engine, equipped with Cab, air, heat, autolube, 45 ton capacity, 29.5R25 rubber.



**CAT 735** SN:B1N00262 6x6, powered by Cat diesel engine, equipped with Cab, air, heat, 35 ton capacity, 23.5 x 25 rubber.



**2022 CAT 730** 6x6, powered by Cat diesel engine, equipped with Cab, air, heat, rear camera, 30 ton capacity, tailgate, 23.5R25 rubber, 6,461 hours.



**2020 CAT 725C2** 6x6, powered by Komatsu diesel engine, equipped with Cab, air, heat, rear camera, engine brake, 25 ton capacity, tailgate, 23.5R25 rubber, 4,404 hours.





**(2) 2019 CAT 725C2** 6x6, powered by Cat diesel engine, equipped with Cab, air, heat, rearview camera, 25 ton capacity, tailgate, 23.5R25 rubber.



**2021 JOHN DEERE 460E-II** 6x6, powered by John Deere diesel engine, equipped with Cab, air, heat, rear camera, 46 ton capacity, tailgate, 6,051 hours.

**(2) 2020 VOLVO A40G** 6x6, powered by diesel engine, equipped with Cab, air, heat, 40 ton capacity, tailgate.

**(2) 2016 VOLVO A40G** 6x6, powered by diesel engine, equipped with Cab, air, heat, 40 ton capacity, tailgate.

**2014 VOLVO A40F** 6x6, powered by diesel engine, equipped with Cab, air, heat, 40 ton capacity, tailgate.



**2021 TEREX TA300** 30 Ton ; Air Conditioned Cab w/ Heater ; 6X6 ; 23.5R 25 Radial Tires ; Steel Body Liner ; Rear View Camera ; Work Lights & Mirrors ; Tailgate, 2,484 hours.



**2015 TEREX TA300** 6x6, powered by diesel engine, equipped with Cab, air, heat, rear camera, engine retarder, 30 ton capacity, body liner, 23.5R25 rubber, 7,974 hours.



**2014 TEREX TA300** 6x6, powered by diesel engine, equipped with Cab, air, heat, rear camera, engine retarder, 30 ton capacity, body liner, 23.5R25 rubber, 8,693 hours.



**2015 KOMATSU HM300-5** 6x6, powered by Komatsu diesel engine, 333hp, equipped with Cab, air, heat, rear camera, traction control, 30 ton capacity, tailgate, 23.5R25 rubber.



**2018 HYDREMA 922HM** powered by Cummins B6.7 diesel engine, 314hp, equipped with Cab, air, heat, 44,000lb capacity, tailgate, rear discharge, 800/45-30.5 rubber, 3,548 hours.



**NEW UNUSED HYDREMA 912HM** 4x4, powered by diesel engine, equipped with Cab, air, heat, 11 ton capacity, rotating dump body, 800/45-30.5 rubber.



**2020 BERGMANN C815S** 6x6, powered by diesel engine, equipped with Cab, air, heat, rear camera, 26,455lb capacity, 1,693 hours.

**2020 BERGMANN C815S** 6x6, powered by diesel engine, equipped with Cab, air, heat, rear camera, 26,455lb capacity, 1,568 hours.



**(14) NEW FIORI D50** 4x4, powered by Kohler KDI 1903 TCR turbo intercooled diesel engine, 56hp, equipped with Cab, air, heat, hydrostatic transmission, rotating dump body, 3.6 yard heaped capacity, 11,023lb capacity, 4-wheel steering, 12-18 rubber. 1-year Full Warranty, 2,000 hours.

## 10 MOTOR GRADERS



**CAT 16H** SN:ATS00385 powered by Cat diesel engine, equipped with EROPS, air, 16ft. blade, blade lift accumulators, push block, rear ripper, 23.5R25 rubber.



**2016 CAT 140M3** SN:N9M00381 powered by Cat diesel engine, equipped with EROPS, air, heat, 14ft. Moldboard, hydraulic sideshift, TIP, Base & four hydraulics, Grade control Cross-slope, 17.5R25 rubber.



**CAT 14MVHP** SN:LR9J00408 powered by Cat diesel engine, equipped with EROPS, air, heat, Variable Horse Power, 16ft. Moldboard, hydraulic sideshift, TIP control, push block, rear ripper, new rubber.



**2020 CAT 12M3** powered by Cat diesel engine, equipped with EROPS, air, heat, rear camera, joystick steering, differential lock, 14ft. Moldboard, hydraulic sideshift, TIP control, 14.00-24 rubber, 5,011 hours.

### Over 1,000 Attachments! Selling All Days!

Every Size & Style that exists will be at this sale!

**BRANDS INCLUDE: CAT, KOMATSU, VOLVO, JOHN DEERE, KOBELCO, SANY, DOOSAN, BOBCAT, NEW HOLLAND, STRICKLAND, GEITH, MILLER, INDECO, EPIROC, RAMMER, NPK, BODINE, GENTEC, TERAN, TROJAN, MIDSTATE, GREATBEAR, WOLVERINE, MOWER KING, WILDKAT, TOP CAT, STOUT & MORE!**



**2018 JOHN DEERE 870G** powered by John Deere diesel engine, equipped with EROPS, air, heat, 14ft. Moldboard, hydraulic sideshift, TIP control, 2,300 hours.

**2015 JOHN DEERE 770G** SN:658057 powered by John Deere PowerTech PSS 9.0L diesel engine, 255hp, equipped with EROPS, air, heat, 14ft. moldboard, hydraulic sideshift, TIP control, rear ripper & front scarifier hydraulics, 3,255 hours.



**2015 JOHN DEERE 670GP** SN:660653 powered by John Deere diesel engine, equipped with EROPS, air, heat, 14ft. Moldboard, hydraulic sideshift, TIP control.



**VOLVO G946C** AWD, powered by diesel engine, equipped with EROPS, air, heat, pilot controls, 14ft. moldboard, hydraulic sideshift, TIP control, rear ripper, radial rubber. Ex-county machine.



**KOMATSU GD625A-1** SN:60032 powered by Komatsu diesel engine, equipped with EROPS, 12ft. Blade, hydraulic sideshift, TIP, push block, front hitch w/ plow, 17.5-25 rubber.



**2018 LEEBOY 685C** SN:186639 powered by diesel engine, equipped with EROPS, air, heat, moldboard, hydraulic sideshift, TIP control, front push blade, 1,330 hours.

## 65 RUBBER TIRED LOADERS



**2019 CAT 982M** 140in. 9.75 CYD GP Bucket ; Deluxe Cab ; Aggregate Counterweight ; 875/65R29 Radial Tires ; PowerTrain Guard ; AutoDig & CPM Ready ; Cold Starting ; 9 FPI Cooling Cores ; 2V RC Hydraulics ; High Speed Oil Change System ; Halogen Lights.

**CAT 980K** SN:W7K01007 powered by Cat diesel engine, equipped with EROPS, air, heat, GP bucket.

**2024 CAT 966GC** SN:SG701648 powered by Cat diesel engine, equipped with EROPS, air, heat, rear camera, GP bucket w/ BOCE, 880 hours by Idling Only.

**2022 CAT 966GC** powered by Cat diesel engine, equipped with EROPS, air, heat, autolube, ride control, quick coupler, 5.25 yard GP bucket, 26.5 x 25 rubber, 987 hours. 96in. Forks Sell Separately.

**2022 CAT 966M** powered by Cat diesel engine, equipped with EROPS, air, heat, auxiliary hydraulic, GP bucket w/ BOCE, 1,362 hours.



**2020 CAT 966M** powered by John Deere diesel engine, equipped with EROPS, air, heat, rear camera, joystick control, ride control, Fusion hydraulic quick coupler, 126in. 5.5 yard GP bucket, 26.5 x 25 rubber, 7,000 hours. 84in. HD Fusion Forks Sell Separately.

**2021 CAT 950GC** SN:M5T03339 powered by Cat diesel engine, equipped with EROPS, air, heat, rear camera, ride control, GP bucket, 23.5R25 rubber.



**2020 CAT 950GC** powered by Cat diesel engine, equipped with EROPS, air, heat, rear camera, autoshift, traction control, Fusion hydraulic quick coupler, 114in. 4.5 yard GP bucket, 23.5R25 rubber.



**2019 CAT 950GC** SN:M5T01777 powered by Cat diesel engine, 225hp, equipped with EROPS, air, heat, pin on GP bucket, 23.5R25 rubber, 1,703 hours.

**2018 CAT 950GC** SN:M5T00556 powered by Cat diesel engine, 225hp, equipped with EROPS, air, heat, GP bucket, 23.5R25 rubber.

**2018 CAT 950M** SN:J1500927 powered by Cat diesel engine, equipped with EROPS, air, heat, GP bucket, 1,880 hours.

**2019 CAT 938M** SN:J3R07589 powered by Cat diesel engine, equipped with Cab, air, heat, ride control, limited slip differential, Fusion quick coupler, 3.7 yard GP bucket. 72in. Forks Sell Separately.

**2018 CAT 938M** SN:J3R05875 powered by Cat diesel engine, equipped with Cab, air, heat, ride control, limited slip differential, Fusion quick coupler, 3.7 yard GP bucket. 72in. Forks Sell Separately.



**2022 CAT 930M** SN:J5K00481 powered by Cat diesel engine, equipped with EROPS, air, heat, deluxe cab, ride control, 3rd valve hydraulics, AG Handler Arrangement, Fusion quick coupler, GP bucket, 20.5R25 rubber, 4,283 hours.

**2022 CAT 930M** powered by Cat diesel engine, equipped with EROPS, air, heat, ride control, 3rd valve hydraulics, Fusion quick coupler, GP bucket, 20.5R25 rubber.



**2022 CAT 930M** SN:J5K00482 powered by Cat diesel engine, equipped with EROPS, air, heat, deluxe cab, ride control, AG Handler Arrangement, 3rd valve hydraulics, Fusion quick coupler, GP bucket, 20.5R25 rubber.

**2022 CAT 930M** SN:J5K00480 powered by Cat diesel engine, equipped with EROPS, air, heat, deluxe cab, ride control, 3rd valve hydraulics, AG Handler Arrangement, extra rear counterweight, Fusion quick coupler, GP bucket, 20.5R25 rubber, 4,454 hours.

**2022 CAT 930M** SN:J5K00488 powered by Cat diesel engine, equipped with EROPS, air, heat, rear camera, deluxe cab, ride control, Ag Handler arrangement, 3rd valve hydraulics, Fusion quick coupler, 4.2 yard GP bucket, 20.5R25 rubber.

**2022 CAT 930M** SN:J5K00492 powered by Cat diesel engine, equipped with EROPS, air, heat, rear camera, deluxe cab, ride control, Ag Handler arrangement, 3rd valve hydraulics, Fusion quick coupler, 4.2 yard GP bucket, 20.5R25 rubber.





**2021 CAT 910** SN:JW200716 powered by Cat diesel engine, equipped with EROPS, air, heat, auxiliary hydraulics, GP bucket, 418 hours.



**2020 CAT 910M** SN:H2202237 powered by Cat diesel engine, equipped with EROPS, air, heat, GP bucket, 791 hours.



**2023 JOHN DEERE 644P** powered by diesel engine, equipped with EROPS, air, heat, hydraulic quick coupler, GP bucket, 1,068 hours.

**2023 JOHN DEERE 644P** powered by diesel engine, equipped with EROPS, air, heat, hydraulic quick coupler, GP bucket, 1,562 hours.

**2018 JOHN DEERE 624K** SN:1DW624KZTJF686471 powered by John Deere diesel engine, equipped with EROPS, air, heat, GP bucket.

**2022 CAT 930M** powered by Cat diesel engine, equipped with EROPS, air, heat, rear camera, ride control, scale & printer, 3rd valve hydraulics, Fusion hydraulic quick coupler, 3.5 yard GP bucket, 20.5R25 rubber, 6,668 hours. 72in. Forks Sell Separately.



**2022 CAT 930M** powered by Cat diesel engine, equipped with EROPS, air, heat, rear camera, ride control, AG handler arrangement, 3rd valve hydraulics, Fusion hydraulic quick coupler, 3.5 yard GP bucket, 20.5R25 rubber, 5,594 hours. 72in. Forks Sell Separately.

**2021 CAT 930M** SN:F5K01666 powered by Cat diesel engine, equipped with EROPS, air, heat, rear camera. deluxe cab, ride control, Fusion quick coupler, 3.5 yard GP bucket, 20.5R25 rubber. Forks Sell Separately.

**2018 CAT 930M** SN:KTG03901 powered by Cat diesel engine, equipped with Cab, air, heat, ride control, limited slip differential, Fusion quick coupler, 2.8 yard GP bucket. 72in. Forks Sell Separately.



**2020 CAT 910M** SN:H2202412 powered by Cat diesel engine, equipped with EROPS, air, heat, auxiliary hydraulics, quick coupler, GP bucket, 36 hours.

**2020 CAT 910M** SN:H2202049 powered by Cat diesel engine, equipped with EROPS, air, heat, high speed transmission, ride control, auxiliary hydraulics, quick coupler, GP bucket, 460 hours.

**2020 CAT 910M** powered by Cat diesel engine, equipped with EROPS, air, heat, ride control, 3rd & 4th valve hydraulics, hydraulic quick coupler, 2 yard GP bucket, 16.9-24 rubber, 2,546 hours.

**UNUSED CAT 908** powered by Cat diesel engine, equipped with EROPS, air, heat, hydraulic quick coupler, GP bucket. Forks Sell Separately.



**2023 JOHN DEERE 544P** powered by John Deere diesel engine, equipped with EROPS, air, heat, 3rd valve hydraulics, JRB hydraulic quick coupler, GP bucket, floatation rubber, 673 hours.

**2023 JOHN DEERE 544P** powered by John Deere diesel engine, equipped with EROPS, air, heat, 3rd valve hydraulics, JRB hydraulic quick coupler, GP bucket, 1,816 hours.

**2018 JOHN DEERE 544K** SN:1DW544KZKJF685751 powered by John Deere diesel engine, equipped with EROPS, air, heat, GP bucket.

**2018 JOHN DEERE 544K** SN:1DW544KZHJF686553 powered by John Deere diesel engine, equipped with EROPS, air, heat, GP bucket.

**2018 KOMATSU WA500-8** SN:A96245 powered by Komatsu SAA6D-140E-7 diesel engine, 357hp, equipped with EROPS, air, heat, GP bucket.

**2020 KOMATSU WA480-8** SN:A48217 powered by Komatsu SAA6D125E-7 diesel engine, 301hp, equipped with EROPS, air, heat, ride control, 7 yard GP bucket, 2,991 hours.

**2018 KOMATSU WA380-7** powered by Komatsu diesel engine, equipped with EROPS, air, heat, GP bucket.

**2018 KOMATSU WA320-7** powered by Komatsu diesel engine, equipped with EROPS, air, heat, GP bucket.

**2017 KOMATSU WA320-8** powered by Komatsu diesel engine, equipped with EROPS, air, heat, GP bucket.

**2023 KOMATSU WA270-8** powered by Komatsu SAA6D107E-3 diesel engine, 153hp, equipped with EROPS, air, heat, ride control, 3.2 yard GP bucket, 2,460 hours.

**2022 KOMATSU WA200-8** powered by Komatsu diesel engine, equipped with EROPS, air, heat, high reach, 3rd valve hydraulics, quick coupler, GP bucket, 366 hours.



**2015 CAT 930M** powered by Cat diesel engine, equipped with EROPS, air, heat, Cat Fusion quick coupler, 3 yard 108in. GP bucket.



**2020 JOHN DEERE 844L** powered by John Deere diesel engine, equipped with EROPS, air, heat, rear camera, joystick steering, Loadrite on-board scale, 130in. GP bucket, 29.5R25 rubber, 8,830 hours.



**2022 CAT 910** powered by Cat diesel engine, equipped with EROPS, air, heat, rear camera, ride control, 3rd & 4th valve hydraulics, hydraulic quick coupler, 2.2 yard GP bucket, 16.9-24 rubber.

**2021 CAT 910** SN:JW200976 powered by Cat diesel engine, equipped with EROPS, air, heat, 4th valve hydraulics, quick coupler, GP bucket, 563 hours.



**2014 JOHN DEERE 844K-II** powered by John Deere diesel engine, equipped with EROPS, air, heat, GP bucket, 29.5R25 rubber.

**2018 JOHN DEERE 824K-II** powered by John Deere diesel engine, equipped with EROPS, air, heat, rear camera, autoshift, joystick control, traction control, 7 yard GP bucket, 26.5 x 25 rubber.





**2022 XCMG XC938U** SN:CMCB18347 powered by Cummins diesel engine, equipped with EROPS, air, heat, rear camera, scale, ride control, auto lube, 3rd valve hydraulics, hydraulic coupler, 2.5yd GP bucket, 20.5R25 rubber, 510 hours

**2022 XCMG XC938U** SN:EMCB18346 powered by Cummins diesel engine, equipped with EROPS, air, heat, rear camera, scale, ride control, auto lube, 3rd valve hydraulics, hydraulic coupler, 3.0yd GP bucket, 20.5R25 rubber, 713 hours

**2022 XCMG XC938U** SN:LMCB18344 powered by Cummins diesel engine, equipped with EROPS, air, heat, rear camera, scale, ride control, auto lube, 3rd valve hydraulics, hydraulic coupler, GP bucket, 20.5R25 rubber, 847 hours

**2022 XCMG XC938U** SN:PNCB01553 powered by Cummins diesel engine, equipped with EROPS, air, heat, rear camera, scale, ride control, auto lube, 3rd valve hydraulics, hydraulic coupler, GP bucket, 20.5R25 rubber, 250 hours

**2022 XCMG XC938U** SN:KNCB01554 powered by Cummins diesel engine, equipped with EROPS, air, heat, rear camera, scale, ride control, auto lube, 3rd valve hydraulics, hydraulic coupler, GP bucket, 20.5R25 rubber, 138 hours

**2022 XCMG XC938U** SN:VMCB18342 powered by Cummins diesel engine, equipped with EROPS, air, heat, rear camera, scale, ride control, auto lube, 3rd valve hydraulics, hydraulic coupler, GP bucket, 20.5R25 rubber, 37 hours

**2017 CASE 621G** SN:NHF243586 powered by diesel engine, equipped with EROPS, air, heat, GP bucket.

**HITACHI ZX150PL-6** powered by diesel engine, equipped with EROPS, air, heat, 3rd valve hydraulics, JRB quick coupler, GP bucket, 20.5R25 rubber.

**NEW UNUSED HITACHI ZW95-6C** SN:W09P10355RBA08917 powered by Deutz diesel engine, equipped with EROPS, air, heat, hydrostatic transmission, quick coupler, GP bucket, 14.5-20 rubber. Forks sell separately.

**2017 JCB 427Z** SN:2407442 powered by diesel engine, equipped with EROPS, air, heat, GP bucket.

**2019 VOLVO L70H** SN:622847 powered by Volvo D6J diesel engine, 170hp, equipped with EROPS, air, heat, ride control, 3.6 yard GP bucket, 3,245 hours.

**NEW 2024 EVERUN ERT1500** powered by Perkins diesel engine, equipped with EROPS, heat, telescopic boom, skid steer hydraulic quick coupler, GP bucket & Forks sell separately.

**2021 BOBCAT L28** SN:B4LD11653 powered by diesel engine, equipped with EROPS, 3rd valve hydraulics, quick coupler, hydraulic grapple bucket, 400 hours.

**2017 KUBOTA R530R41** SN:10667 powered by Kubota diesel engine, equipped with EROPS, GP bucket.



**(2) NEW FLAND FL45** powered by gas engine, 13.5hp, equipped with OROPS, 39in. GP bucket, 23x8.5-12 rubber.

### 3 RUBBER TIRED LOADER ATTACHMENTS

**NEW UNUSED CAT BP25 SWEEPER** fits Cat 910, Water Tank Dust Suppression System, Spring Suspension, Hopper for Debris collection.

**NEW TERAN 105IN. GP BUCKET** for CAT 938G/H - 2.743MM WIDE - Straight Edge NO TIPS.

**DEMO BOBCAT 96IN. ANGLE BROOM**

### FRONT END DUMP

**2015 WACKER DW60** SN:WVNC1801PPAL00480 powered by diesel engine, equipped with ROPS, 6 ton front dumper.

### 22 TRACTOR LOADER BACKHOES



**2010 CAT 430E** Deluxe EROPS Cab w/ AC & Heater ; Tier 3 Engine ; 4 Wheel Drive ; Multi-Purpose Loader Hydraulics ; MP Bucket & Rear Bucket ; E-Stick ; Michelin Radial Tires ; Stabilizers ; Work Lights & Mirrors.



**2023 CAT 420XE** SN:H9X02470 4x4, powered by Cat diesel engine, equipped with EROPS, air, deluxe cab, ride control, pilot control, front and rear auxiliary hydraulics, front and rear coupler, GP front bucket, 12in. rear digging bucket, 222 hours, Remaining PWT+HYD+TECH Cat warranty until September 2026.



**2023 CAT 420XE** SN:H9X02473 4x4, powered by Cat diesel engine, equipped with EROPS, air, deluxe cab, ride control, pilot control, front and rear auxiliary hydraulics, front and rear coupler, GP front bucket, 12in. rear digging bucket, 200 hours, Remaining PWT+HYD+TECH Cat warranty until September 2026.

**2021 CAT 420** 4x4, powered by Cat diesel engine, equipped with EROPS, air, heat, autoshift transmission, extendahoe, front & rear quick coupler, front & rear auxiliary hydraulics, GP front bucket, rear digging bucket, 1,100 hours.



**2017 CAT 420F2** 4x4, powered by Cat diesel engine, equipped with EROPS, air, heat, autoshift transmission, extendahoe, rear auxiliary hydraulics, GP front bucket, rear digging bucket, 1,700 hours.

**2020 CAT 416F2** 4x4, powered by Cat diesel engine, equipped with EROPS, air, heat, autoshift transmission, extendahoe, rear auxiliary hydraulics, GP front bucket, rear digging bucket, 1,100 hours.

**CAT 416** SN:KSF01479 4x4, powered by Cat diesel engine, equipped with OROPS, 1.25 yard GP bucket, 24in. Digging bucket, 1,634 hours.

**JOHN DEERE 710L** SN:381635 powered by John Deere diesel engine, equipped with EROPS, air, 4-in-1 front bucket, rear digging bucket.

**JOHN DEERE 710L** SN:383164 powered by John Deere diesel engine, equipped with EROPS, air, 4-in-1 front bucket, rear digging bucket.

**JOHN DEERE 710L** SN:384280 powered by John Deere diesel engine, equipped with EROPS, air, 4-in-1 front bucket, rear digging bucket.

**JOHN DEERE 710L** SN:343606 powered by John Deere diesel engine, equipped with EROPS, air, 4-in-1 front bucket, rear digging bucket.

**JOHN DEERE 710L** SN:381392 powered by John Deere diesel engine, equipped with EROPS, air, 4-in-1 front bucket, rear digging bucket.

**JOHN DEERE 710L** SN:381440 powered by John Deere diesel engine, equipped with EROPS, air, 4-in-1 front bucket, rear digging bucket.

**JOHN DEERE 710J** 4x4, powered by John Deere diesel engine, equipped with EROPS, air, heat, extendahoe, GP front bucket, rear digging bucket.

**JOHN DEERE 710D** 4x4, powered by John Deere diesel engine, equipped with EROPS, heat, GP front bucket, rear digging bucket.

**JOHN DEERE 410K** 4x4, powered by John Deere diesel engine, equipped with EROPS, air, heat, pilot controls, extendahoe, GP front bucket, rear digging bucket.

Please refer to [lyonauction.com](http://lyonauction.com) for an up-to-date listing.





**2021 JOHN DEERE 310SL** SN:1T0310SLCMF402638 4x4, powered by John Deere diesel engine, equipped with OROPS, power shift transmission, pilot control, ride control, rear hydraulics, GP front bucket, rear digging bucket. Remaining Warranty, 3,733 hours.

**2019 JOHN DEERE 310LEP** SN:349977 powered by John Deere diesel engine, equipped with OROPS, GP front bucket, rear digging bucket.

**2019 JOHN DEERE 310LEP** SN:345973 4x4, powered by John Deere diesel engine, equipped with OROPS, GP front bucket, rear digging bucket, 2,586 hours.

**2018 JOHN DEERE 310LEP** SN:325424 4x4, powered by John Deere diesel engine, equipped with EROPS, extendahoe, GP front bucket, rear digging bucket, 2,374 hours.



**JOHN DEERE 310G** SN:919240 4x4, powered by John Deere diesel engine, equipped with EROPS, heat, rear auxiliary hydraulics, GP front bucket, rear digging bucket.

**JOHN DEERE 310J** SN:213733 4x4, powered by John Deere diesel engine, equipped with OROPS, GP front bucket, rear digging bucket, 1,861 hours.

## 14 TRACTOR LOADER BACKHOE ATTACHMENTS

(12) **NEW TERAN & TROJAN HYDRAULIC HAMMERS** to fit various model & size excavators. (Please Refer to [lyonauction.com](http://lyonauction.com) for detailed listing).

## 27 HYDRAULIC EXCAVATORS



**CAT 350LC** SN:3ML00345 powered by Cat diesel engine, equipped with Cab, air, 55in. Digging bucket, long undercarriage.



**NEW UNUSED CAT 320GC** powered by Cat diesel engine, equipped with Cab, air, heat, 360 degree cameras, pattern changer, auxiliary hydraulics, 24in. Pads, quick coupler, digging bucket.

**2019 CAT 320GC** SN:KTN10680 powered by Cat diesel engine, equipped with Cab, air, heat, 360 degree cameras, 32in. Pads, quick coupler, digging bucket, 1,451 hours.

**2021 CAT 315GC** SN:LYW00689 powered by Cat diesel engine, equipped with Cab, air, heat, 360 degree cameras, pattern changer, front blade, combination auxiliary hydraulics, 20in. pads w/ rubber blocks, quick coupler, digging bucket, 2,012 hours.

**2020 CAT 315 2D** SN:WKX00163 powered by Cat diesel engine, equipped with Cab, air, heat, 360 degree cameras, Cat grade 2D, Cat assist, Cat payload, 2D E-fence, pattern changer, auxiliary hydraulics, 20in. pads w/ rubber blocks, quick coupler, digging bucket w/ hydraulic thumb, 1,770 hours.

**2019 CAT 313FLGC** SN:ZGS00132 powered by Cat diesel engine, equipped with Cab, air, heat, rear & side cameras, auxiliary hydraulics, 28in. Pads, quick coupler, digging bucket w/ hydraulic thumb, 3,987 hours.

**2021 CAT 313GC** SN:NFZ10261 powered by Cat diesel engine, equipped with Cab, air, heat, 360 degree cameras, pattern changer, auxiliary hydraulics, 28in. Pads, quick coupler, digging bucket w/ hydraulic thumb, 2,521 hours.

**2016 CAT 311FLRR** SN:JFT01010 powered by Cat diesel engine, equipped with Cab, air, heat, rear camera, auxiliary hydraulics, 24in. Pads, reduced tail swing, quick coupler, digging bucket, long undercarriage, 2,266 hours.

**2020 CAT 305.5** powered by Cat diesel engine, equipped with OROPS, front blade, rubber tracks, quick coupler, digging bucket w/ thumb, 800 hours.

(2) **2019 CAT 305.5** powered by Cat diesel engine, equipped with OROPS, front blade, rubber tracks, quick coupler, digging bucket w/ thumb, 800 hours.



**2021 KOBELCO SK140SRLC-7** SN:5219 powered by diesel engine, equipped Cab, air, side & rear camera, 10ft stick, auxiliary hydraulics, 24in pads, digging bucket w/hydraulic thumb, long undercarriage, 1,313 hours.

**2021 DOOSAN DX85R-3** SN:6003345 powered by diesel engine, equipped with Cab, air, heat, front blade, off-set boom, combination auxiliary hydraulics, rubber tracks, quick coupler, digging bucket w/ hydraulic thumb, 1,394 hours.

**2019 KOMATSU PC80MR-5** SN:F50393 powered by Komatsu diesel engine, equipped with Cab, air, heat, front blade, off-set boom, combination auxiliary hydraulics, road liner pads, quick coupler, digging bucket w/ hydraulic thumb, 2,482 hours.

**2017 TAKEUCHI TB290** SN:185103457 powered by diesel engine, equipped with Cab, air, heat, front blade, rubber tracks, reduced tail swing, digging bucket.

**2016 TAKEUCHI TB240** SN:124001497 powered by diesel engine, equipped with Cab, air, heat, front blade, rubber tracks, reduced tail swing, digging bucket.

**2019 TAKEUCHI TB230** SN:130005798 powered by diesel engine, equipped with OROPS, front blade, auxiliary hydraulics, rubber tracks, digging bucket.

**NEW UNUSED CASE CX37C** powered by diesel engine, equipped with Cab, 2-speed, front blade, 2-way auxiliary hydraulics, additional counterweight, rubber tracks, digging bucket w/ thumb bracket.

**2022 XCMG XE75U** SN:UEMKA00032 powered by Kubota V2607 diesel engine, 60.3hp, equipped with Cab, air, heat, front blade, auxiliary hydraulics, steel track w/ rubber inserts, digging bucket, 840 hours.

**2022 XCMG XE55U** SN:UEMKA00265 powered by Kubota V2403 diesel engine, 41.2hp, equipped with OROPS, front blade, auxiliary hydraulics, rubber tracks, digging bucket, 124 hours.

**2022 XCMG XE55U** SN:UCMKA00252 powered by Kubota V2403 diesel engine, 41.2hp, equipped with OROPS, front blade, auxiliary hydraulics, rubber tracks, digging bucket, 203 hours.



**2022 XCMG XE35U** SN:UCNKA01895 powered by diesel engine, equipped with Cab, air, heat, blade, swing boom, auxiliary hydraulics, rubber tracks, hydraulic coupler, digging bucket with hydraulic thumb, 378 hours.

(2) **2021 SANY SY60C** powered by diesel engine, equipped with OROPS, front blade, rubber tracks, quick coupler, digging bucket w/ thumb, 600 hours.



(2) **NEW MIVA VA13** powered by gas engine, equipped with auxiliary hydraulics, front blade, 16in. Digging bucket, manual thumb.

**NEW LANDHERO LDH-KV16** powered by Pericom gas engine, 13.5hp, equipped with OROPS, front blade, 7in. rubber tracks, digging bucket.



### 3 HYDRAULIC ROTATING SHEARS

(3) NEW TERAN HYDRAULIC ROTATING SHEARS to fit various model & size excavators. (Please Refer to [lyonauction.com](http://lyonauction.com) for detailed listing).

### 18 HYDRAULIC HAMMERS

(18) NEW TERAN, TROJAN & PALADIN HYDRAULIC HAMMERS to fit various model & size excavators. (Please Refer to [lyonauction.com](http://lyonauction.com) for detailed listing).

### 4 EXCAVATOR THUMBS

(4) NEW TERAN & TROJAN THUMBS to fit various model & size excavators. (Please Refer to [lyonauction.com](http://lyonauction.com) for detailed listing).

### 7 EXCAVATOR RIPPERS

(7) NEW TERAN RIPPERS to fit various model & size excavators. (Please Refer to [lyonauction.com](http://lyonauction.com) for detailed listing).

### 103 EXCAVATOR BUCKETS

(103) NEW TERAN & TROJAN BUCKETS ranging from 80in. To 12in., to fit various model & size excavators. (Please Refer to [lyonauction.com](http://lyonauction.com) for detailed listing).

### 19 EXCAVATOR ATTACHMENTS

(19) NEW TERAN COMPACTORS, PINS, & LINKS to fit various model & size excavators. (Please Refer to [lyonauction.com](http://lyonauction.com) for detailed listing).

### 4 ROUGH TERRAIN CRANES



P&H OMEGA 18 TON SN:46601 powered by diesel engine, equipped with Cab, 18 ton capacity, rough terrain tires.



P&H OMEGA 18 SN:46600 4x4, powered by diesel engine, equipped with Cab, 18 ton lift capacity, 62ft. Reach height, 22ft. Jib, dual winch, 14.00-24 rubber



P & H S35 SN:35224 powered by Deutz BF6L-913 diesel engine, equipped with powershift transmission, 80ft. Reach height, (4) sheave hook & block, (4) outriggers, 16 x 24 rubber.



FMC LINKBELT HSP-8015 SN:47H1-593, powered by diesel engine, equipped with EROPS, 15-ton lift capacity, 3-section 60ft. proportional boom, 80ft max reach, (4) hydraulic stabilizers.

### MILLING MACHINE



ROADTEC RX-50 powered by Cummins diesel engine, equipped with 3-track drive.

### ASPHALT PAVERS



LEEBOY 8500T SN:10474 powered by Kubota diesel engine, equipped with Legend 8ft.-15ft. Propane heated screed, oscillating push rollers, low deck, 663 hours.

INGERSOLL RAND PF-150 powered by diesel engine.

### 3 ROTARY MIXERS



2017 CAT RM300 SN:BWR00845 4x4, powered by Cat C11 Acert diesel engine, 350hp, equipped with 96in. Soil rotor, 20in. Mixing depth, rear wheel drive, 2,896 hours.



2017 CAT RM300 SN:BWR00830 4x4, powered by Cat C11 Acert diesel engine, 350hp, equipped with 96in. Soil rotor, 20in. Mixing depth, rear wheel drive, 4,341 hours.

2014 CAT RM300 SN:BWR00662 4x4, powered by Cat C11 Acert diesel engine, 350hp, equipped with EROPS, 96in. Soil rotor, 20in. Mixing depth, rear wheel drive.

### SOIL STABILIZERS



2018 BOMAG RS360 SN:101596021007 powered by diesel engine, 350hp, equipped with EROPS, air, heat, 1,693 hours.



CMI RS-500B SN:531246 AWD, powered by Cat diesel engine, equipped with EROPS, 98in. cutting width, 16in. cutting depth, 28L-26 rubber.

### SOIL COMPACTOR



2019 CAT 815K SN:MBB00326 powered by Cat diesel engine, equipped with EROPS, air, heat, rear camera, front blade, 38in. Wheels.

### 56 VIBRATORY ROLLERS

(4) NEW UNUSED DYNAPAC CA30D powered by diesel engine, equipped with EROPS, air, heat, 84in. Smooth drum, 2-speed vibratory drum, drum drive, 23.1-26 rubber.

DEMO DYNAPAC CA3500D powered by Cummins F3.8 diesel engine, equipped with EROPS, air, heat, 84in. smooth drum, vibratory drum, drum drive, 318 hours.

DEMO DYNAPAC CA3500D powered by Cummins F3.8 diesel engine, equipped with EROPS, air, heat, 84in. smooth drum, vibratory drum, drum drive.



2022 DYNAPAC CA3500D EROPS Cab w/ AC & Heater ; 84in. Smooth Drum ; SEISMIC ; Cummins Engine ; 23.1 X 26 Tires ; LED Lights ; ECO Mode ; Traction Control ; DynaLink.





**(2) NEW UNUSED DYNAPAC CA2500D** EROPS Cab w/ AC & Heater ; 84in. Smooth Drum ; 23.1 X 26 Tires ; Cummins F3.8 Engine ; Hydrostatic Drive w/ Dual Motor Drive ; Steel Scraper ; SEISMIC ; Rotatable Driver's Station 180 degree ; Dynamic Compaction Meter ; Automatic Vibration Control (AVC) ; Active Bouncing Control (ABC) ; Dynapac Compaction Meter ; Traction Control.



**NEW UNUSED DYNAPAC CA1500D** EROPS Cab w/ AC & Heater ; 66in. Smooth Drum ; Deutz TCD 3.6 Engine ; Hydrostatic Drive w/ Parallel Motors for Rear Axle & Drum ; 14.9x24 Tires ; Speed Controller (Potentiometer) ; Automatic Vibration Control (AVC) ; Active Bouncing Control (ABC) ; Dynapac Compaction Meter ; Rotatable Driver's Station 180 degree.

**(2) NEW UNUSED DYNAPAC CA1500D** powered by Deutz TD3.6L4 diesel engine, equipped with EROPS, air, heat, 66in. smooth drum, vibratory drum, drum drive.



**(5) 2022 XCMG CV123PDU** powered by Cummins diesel engine, 130hp, equipped with EROPS, air, 84in. Padsfoot drum, vibratory drum, drum drive.

**(5) 2021 XCMG CV123PDU** powered by Cummins diesel engine, 130hp, equipped with EROPS, air, 84in. Smooth drum, vibratory drum, drum drive.

**(2) 2020 XCMG CV123PDU** powered by diesel engine, equipped with EROPS, air, heat, 84in. Smooth drum, vibratory drum, drum drive. Shell Kit Sells Separately.



**(6) 2022 XCMG CV83PDU** powered by Cummins diesel engine, 99hp, equipped with EROPS, air, 84in. Padsfoot drum, vibratory drum, drum drive.



**2021 VOLVO SD115B** SN:236949 powered by diesel engine, equipped with OROPS, 84in smooth drum, vibratory drum, drum drive, 4,315 hours.

**2018 CAT CP56** SN:P5600509 powered by Cat diesel engine, equipped with OROPS, 84in. Padsfoot drum, vibratory drum, drum drive, 2,833 hours.

**2018 CAT CP56** SN:P5600520 powered by Cat diesel engine, equipped with OROPS, 84in. Padsfoot drum, vibratory drum, drum drive, 2,821 hours.

**2018 CAT CS44** SN:CS300624 powered by Cat diesel engine, equipped with OROPS, 66in. Padsfoot drum, vibratory drum, drum drive, 1,513 hours.



**2021 HAMM H131** SN:WGH0H267AHAA00193 powered by diesel engine, equipped with EROPS, air, heat, 84in. Smooth drum, vibratory drum, drum drive, 1,331 hours.



**2020 HAMM H131** SN:WGH0H234CHAA00906 powered by diesel engine, equipped with EROPS, air, heat, 84in. Smooth drum, vibratory drum, drum drive, 1,331 hours.



**2021 HAMM H111** SN:WGH0H266THAA00029 powered by diesel engine, equipped with EROPS, air, heat, 84in. Smooth drum, vibratory drum, drum drive, 1,097 hours.



**(2) 2018 HAMM H10I** powered by Deutz diesel engine, equipped with OROPS, 84in. Padsfoot drum, vibratory drum, drum drive.



**(3) 2017 HAMM H10I** powered by diesel engine, equipped with OROPS, 84in. Smooth drum, vibratory drum, drum drive.



**(2) 2021 HAMM H7I** powered by diesel engine, equipped with EROPS, air, heat, 66in. Smooth drum, vibratory drum, drum drive.



**2021 BOMAG BW213DH-5** EROPS Cab w/ AC & Heater ; 84in. Smooth Drive ; Steel Scrapers ; Dual Pump Drive ; 23.1 X 26 Tires ; Work Lights & Mirrors ; Tier 4 Final Engine.





**2016 BOMAG BW212D-5** EROPS Cab w/ AC & Heater ; 84in. Smooth Drum ; Steel Scrapers ; Drum Drive ; 23.1 X 26 Tires ; Work Lights & Mirrors ; Deutz Diesel Engine.



**2019 BOMAG BW211D-5** SN:101586081810 powered by diesel engine, equipped with EROPS, air, heat, 66in. Padsfoot drum, vibratory drum, drum drive, 1,217 hours.

**2016 BOMAG BW211D** SN:101585401296 powered by diesel engine, equipped with OROPS, 84in. Smooth drum, vibratory drum, drum drive.

**2015 BOMAG BW211D** SN:101585401185 powered by diesel engine, equipped with OROPS, 84in. Smooth drum, vibratory drum, drum drive.



**BOMAG BW211D-40** SN:901583251626 powered by diesel engine, equipped with OROPS, 84in. smooth drum, vibratory drum, drum drive, runs, drives and vibrates, will not steer.

**UNUSED BOMAG BW177DH-5** powered by diesel engine, equipped with EROPS, air, heat, 66in. Smooth drum, vibratory drum, drum drive.



**2020 BOMAG BW 177D-5** SN:101587061374 powered by diesel engine, equipped with EROPS, air, heat, 66in. Smooth drum, vibratory drum, drum drive, 605 hours.

**SAKAI SV544D** SN:3SV53-10292 powered by Cummins diesel engine, equipped with OROPS, 84in. Smooth drum, vibratory drum, drum drive.



**SAKAI SV540D** SN:10290 powered by Deutz diesel engine, equipped with OROPS, 84in. smooth drum, vibratory drum, drum drive.

**SAKAI SV540T** powered by diesel engine, equipped with OROPS, 84in. Padsfoot drum, vibratory drum, drum drive.



**SAKAI SV510 SERIES III** SN:10256 powered by diesel engine, equipped with OROPS, 84in. Smooth drum, vibratory drum, drum drive, scraper bar, 3,104 hours.



**SAKAI SV505** SN:40233 powered by diesel engine, equipped with OROPS, 84in. padsfoot drum, vibratory drum, drum drive.

## 8 ASPHALT ROLLERS

**NEW UNUSED CAT CB2.7** powered by Cat diesel engine, 24.6hp, equipped with ROPS, 47.2in. Smooth drum, vibratory drum, double drum, drum drive, water system.

**NEW UNUSED CAT CB4.4** powered by Cat diesel engine, equipped with Foldable ROPS, 31.5in. smooth drum, vibratory drum, double drum, water system.

**(2) NEW UNUSED BOMAG BW120AD-5** powered by diesel engine, equipped with ROPS, 47in. Smooth drum, vibratory drum, double drum, water system.

**CAT CB224** SN:00769 powered by Hatz diesel engine, equipped with OROPS, 47in. smooth drum, vibratory drum, double drum, drum drive, water system.

**2017 VOLVO DD15** SN:270257 powered by diesel engine, equipped with ROPS, 39in. Smooth drum, vibratory drum, double drum, water system, 1,534 hours.

**HAMM HD110VHV** powered by Deutz diesel engine, equipped with OROPS, 66in. Smooth drum, vibratory drum, double drum, drum drive, water system.

**INGRAM 315** powered by Cummins diesel engine, equipped with 3-drums.

## PNEUMATIC ROLLER

**ROSCO 915** powered by Cummins diesel engine, equipped with hydrostatic drive, 9-wheels.

## 3 TRENCH ROLLERS

**2017 WACKER RTKX-SC3** SN:24378270 powered by diesel engine, equipped with padsfoot drum, vibratory drum, double drum, remote.

**2017 WACKER RTKX-SC3** SN:24381574 powered by diesel engine, equipped with padsfoot drum, vibratory drum, double drum, remote.

**2015 WACKER RTLX-SC3** SN:244281 powered by diesel engine, equipped with 32in. Padsfoot drum, vibratory drum, double drum, drum drive, remote.

## 13 SWEEPERS



**2022 BROCE RCT350** powered by diesel engine, equipped with EROPS, air, heat, 8ft. Broom, push blade, water system, 1,301 hours.



**2021 BROCE RCT350** SN:412314 powered by diesel engine, equipped with EROPS, air, heat, 8ft. Broom, water tank, 558 hours.

**2021 BROCE RCT350** SN:412316 powered by diesel engine, equipped with EROPS, air, heat, 8ft. Broom, water tank, 904 hours.

**2021 BROCE RCT350** SN:412353 powered by diesel engine, equipped with EROPS, air, heat, 8ft. Broom, water tank, 739 hours.

**(6) 2018 LAYMOR SM300** powered by diesel engine, equipped with OROPS, 8ft. Sweeper, water system.

**2015 LAYMOR SM300** SN:36373 powered by diesel engine, equipped with OROPS, sweeper, water system.

**LAYMOR 6H** SN:30726 powered by diesel engine, equipped with OROPS, sweeper, water system.

**INTERNATIONAL VN:550951** powered by diesel engine, equipped with Tymco 600 sweeper, dual wheel single axle.

## WATER TANKERS

**2013 CAT 740B NEW** Hamilton HEC HH6KS 8,000 Gallon Water Tank; Air Conditioned Cab w/ Heater ; 29.5R 25 Radial Tires ; Rearview Camera ; Water Tank is Low Height & Low Center of Gravity ; Manufactured by Hamilton Equipment Company ; Integrated Steel Fenders ; Berkeley 5X4 Hydraulic Driven Pump ; Rear Fill Pipe ; Self Loading ; Top Manhole w/ Screen ; Hydraulic Oil Cooler ; Rear Hose Reel ; Internal Ceramic Coated Tank ; LED Running & Tail Lights ; Retarder.





**2021 CAT 730-04A** NEW Hamilton HEC HH6KS 6,000 Gallon Water Tank installed @ 4174 Hrs. ; Air Conditioned Cab w/ Heater ; 23.5R 25 Radial Tires ; Rearview Camera ; \*CAT Premier Warranty Thru 11/30/25 or 10,000 Hrs.\* ; Water Tank is Low Height & Low Center of Gravity ; Manufactured by Hamilton Equipment Company ; Integrated Steel Fenders ; Berkeley 5X4 Hydraulic Driven Pump ; Rear Fill Pipe ; Self Loading ; Top Manhole w/ Screen ; Hydraulic Oil Cooler ; Rear Hose Reel ; Internal Ceramic Coated Tank ; LED Running & Tail Lights ; Retarder.

## 25 WATER TRUCKS



**2023 KENWORTH T370** VN:2NKHLJ9X6LM229501 powered by Paccar PX-9 diesel engine, 300hp, equipped with Allison automatic transmission, power steering, United 4,000 gallon water tank, front, rear and side spray heads, Chalmers suspension, 315/80R22.5 front tires, 11R22.5 rear tires, tandem axle, 39,550 miles, 2,378 hours.



**2019 KENWORTH T370** VN:2NKHLJ9X0KM252254 powered by diesel engine, equipped with automatic transmission, power steering, 4,000 gallon water tank, tandem axle.



**2019 KENWORTH T370** VN:2KKHLJ9X6KM252257 powered by diesel engine, equipped with automatic transmission, power steering, 4,000 gallon water tank, tandem axle.



**2018 KENWORTH T370** VN:2NKHLJ9X2KM252255 powered by diesel engine, equipped with automatic transmission, power steering, 4,000 gallon water tank, tandem axle.



**2020 PETERBILT PB348** VN:2NP3LJ9X4LM701893 powered by diesel engine, equipped with automatic transmission, power steering, 4,000 gallon water tank, tandem axle.



**2019 PETERBILT PB348** VN:2NP3LJ9X1KM616296 powered by diesel engine, equipped with automatic transmission, power steering, 4,000 gallon water tank, tandem axle.



**2018 PETERBILT PB348** VN:2NP3LJ9X6JM496204 powered by diesel engine, equipped with automatic transmission, power steering, 4,000 gallon water tank, tandem axle.



**2018 PETERBILT PB348** VN:2NP3LJ9X5JM496582 powered by diesel engine, equipped with automatic transmission, power steering, 4,000 gallon water tank, tandem axle.



**2000 PETERBILT 330** SN:513361 powered by Cat 3126B diesel engine, equipped with Fuller RT8709B transmission, 3,500 gallon custom water tank, top load, curbside load, front, side, and rear spray heads, secondary water pump, manifold to supply concrete saws, self contained pressure washer, air ride suspension, 3.70 ratio, 22.5 tires, tandem axle.



**2020 INTERNATIONAL MV607** VN:3HAEUMMN0LL138678 powered by diesel engine, equipped with automatic transmission, power steering, 2,000 gallon water tank, dual wheel single axle.



**2020 INTERNATIONAL MV607** VN:3HAEUMMN9LL138680 powered by diesel engine, equipped with automatic transmission, power steering, 2,000 gallon water tank, dual wheel single axle.

**2020 INTERNATIONAL MV607** VN:3HAEUMMN3LL138626 powered by diesel engine, equipped with automatic transmission, power steering, 2,000 gallon water tank, dual wheel single axle.



**2019 INTERNATIONAL** VN:3HAMMMN4KL107802 powered by diesel engine, equipped with automatic transmission, power steering, Ledwell 2,000 gallon water tank, front, side, and rear spray heads, dual wheel single axle, 14,302 miles.



**2018 INTERNATIONAL VN:1FVACXFC4KHKE6026** powered by diesel engine, equipped with automatic transmission, power steering, Ledwell 2,000 gallon water tank, front, side, and rear spray heads, dual wheel single axle, 21,183 miles.



**2018 INTERNATIONAL VN:3HAWGTAT3KL095557** powered by diesel engine, automatic transmission, power steering, Ledwell 4,000 gallon water tank, front, side, and rear spray heads, tandem axle, 44,500 miles.

**2019 FREIGHTLINER M2 VN:1FVACXFC4KHKG9029** powered by Cummins diesel engine, equipped with automatic transmission, power steering, a/c, PTO, Ledwell 2000 water tank, 2 front spray heads, 2-rear spray heads, 1-side spray head, dual wheel single axle, 10,208 miles.

**2019 FREIGHTLINER M2 VN:1FVACXFC5KHKG9041** powered by Cummins diesel engine, equipped with automatic transmission, power steering, a/c, PTO, Ledwell 2000 water tank, 2 front spray heads, 2-rear spray heads, 1-side spray head, dual wheel single axle, 8,055 miles.

**2019 FREIGHTLINER M2 VN:1FVACXFC6KHKE6030** powered by Cummins diesel engine, equipped with automatic transmission, power steering, engine brake, a/c, cruise control, PTO, Ledwell 2000 water tank, 2 front spray heads, 2-rear spray heads, 1-side spray head, dual wheel single axle, 14,346 miles.

**2019 FREIGHTLINER M2 VN:1FVACXFC2KHKG9045** powered by Cummins diesel engine, equipped with automatic transmission, power steering, engine brake, a/c, cruise control, PTO, Ledwell 2000 water tank, 2 front spray heads, 2-rear spray heads, 1-side spray head, dual wheel single axle, 9,602 miles.



**2019 FORD F750 VN:1FDXF7DC8KDF06998** powered by diesel engine, equipped with automatic transmission, power steering, 2,000 gallon water tank, dual wheel single axle.



**2018 FORD F750 VN:1FDXF7DC6JDF05251** powered by diesel engine, equipped with automatic transmission, power steering, 2,000 gallon water tank, dual wheel single axle.



**2018 FORD F750 VN:1FDXF7DC3JDF05255** powered by diesel engine, equipped with automatic transmission, power steering, 2,000 gallon water tank, dual wheel single axle.



**2018 FORD F750 VN:1FDXF7DCXJDF05253** powered by 6.7L diesel engine, equipped with automatic transmission, power windows and locks, air brakes, Curry 2,000 gallon water tank, front, side and rear spray heads, rear hose reel, 11R22.5 tires, dual wheel single axle.

**2015 FORD F750 VN:3FRXF7FA1FV706970** powered by diesel engine, equipped with automatic transmission, power steering, 2,000 gallon water tank, dual wheel single axle.

**2012 HINO 388 VN:5PQNV8JM5C4S50337** powered by diesel engine, equipped with Allison automatic transmission, Unused Splash 2,500 Gallon Water, 3/16 Shell, Dished Heads, 2 Baffles, 3in. Rear fill line, Rear sight tube, Steps, Hose Trays, Plumbing and 6 sprayers, (2) Front Sprayers one on each side, (2) Side Sprayer, PN: 104-212-300, (2) Rear Sprayers one on each side, Control Box with 6 switches, 4x3 Rope Seal Pump, dual wheel single axle, 215,536 miles.

### WATER TRUCK BODIES

**UNUSED SPLASH 15FT. 4,000 GALLON 3/16** Shell, 1 baffle, dished heads, 2 front spray, 2 rear spray 4x3 rope seal pump, control box & switches, hose trays, sight glass, 3in. fill line.

**UNUSED SPLASH 10FT. 2,100 GALLON 3/16** Shell, 1 baffle, dished heads, 2 front spray, 2 rear spray 4x3 rope seal pump, control box & switches, hose trays, sight glass, 3in. fill line.

### DETACHABLE GOOSENECK TRAILERS

**(2) NEW UNUSED WITZCO RG52** 104,000# load capacity, 3 axles with 48" overall length. Removable gooseneck, 8'6" wide, level deck style. Ground bearing, 2 angle scraper gooseneck with self-contained hydraulic system. 22' load deck, tapered front beam, 2" lumber decking & (24) 12" outriggers (12 each side). 3 "D" rings per side of deck & 2 on front stumps at tire area. Hutch 9700 spring suspension, 25,000# capacity axles, 16.5" x 7" air brakes, uni-mount wheels with 255/70 R22.5 Radial tires. Modular wire harness, rubber mounted sealed lights, DOT approved. FET APPLIES

### 3 TAGALONG TRAILERS

**(3) NEW 2025 DELTA 27TB 20FT.** equipped with 16ft. Tilt deck, 4ft. Fixed deck, 14,000lb capacity, (2) 7,000lb axles, 235/80R16 tires, HD jack, adjustable hitch, chain storage, LED lights, tandem axle.

### ALSO SELLING ON DAY 7

Please refer to [lyonauction.com](http://lyonauction.com) for an up-to-date listing.

**MULTI-USE CONTAINERS**

**MINI TRACK LOADERS**

**MINI TIRED LOADERS**

**MINI TRACKED DUMPERS**

**CONTAINERS**

**STORAGE BUILDINGS**

**UTILITY VEHICLES**

**GOLF CARTS**

**RECREATIONAL VEHICLES**

**BOUNCE HOUSES**

**PARTY RENTAL SUPPLIES**

**PRESSURE WASHERS**

**OVER 200 LOTS OF NEW SUPPORT EQUIPMENT**

**WHOLE HOUSE GENERATORS**

## DAY 8

## FRIDAY, FEBRUARY 7

Hydraulic Excavators, Rubber Tired Hydraulic Excavators, Scrap Handling Excavators, Crawler Tractors, Crawler Loaders, Pipe Layers, Compactors, Crawler Dumps, Forklifts, Several New Equipment Trailers, Tagalongs, Recreational Vehicles, Generators, Utility Vehicles, Light Plants, Fuel Tanks, New Tools & Support Equipment (Small Amount), Containers, Portable Bathrooms.

### 157 HYDRAULIC EXCAVATORS

**2020 CAT 349FL** powered by Cat diesel engine, equipped with Cab, air, counterweight removal device, reach boom, 12ft. stick, 34in pads, 80in digging bucket.

**2015 CAT 349FL** Auxiliary Hydraulics: Piping for Hammer, Shear w/ Rotation & Thumb ; Air Conditioned Cab w/ Heater ; Reach Boom ; 12ft.10in. Stick ; Hydraulic Counterweight Removal ; Rearview Camera ; 70/30 FOGS Guard Package ; High Ambient Cooling ; 36in.TG Shoes ; Pattern Changer.

**2011 CAT 349EL** Piping for Hammer, Shear, & Rotation ; Air Conditioned Cab w/ Heater ; GP Bucket w/ Teeth ; H-Back Air Suspension Seat w/ Heater ; 36in. TG Shoes ; Reach Boom ; 12ft.10in. Stick ; Pattern Changer ; High Ambient Cooling ; Hydraulic Counterweight Removal ; Cold Weather Start.

**2023 CAT 340 2D** powered by Cat diesel engine, equipped with Cab, air, heat, 360 degree cameras, Cat grade 2D, Cat assist, Cat payload, 2D E-fence, pattern changer, auxiliary hydraulics, 24in. pads, quick coupler, digging bucket, 999 hours.

**2023 CAT 340 2D** powered by Cat diesel engine, equipped with Cab, air, heat, 360 degree cameras, Cat grade 2D, Cat assist, Cat payload, 2D E-fence, pattern changer, auxiliary hydraulics, quick coupler, digging bucket, 100 working, idled to 1,000 hours.

**2023 CAT 340 2D** powered by Cat diesel engine, equipped with Cab, air, heat, 360 Degree cameras, Cat grade 2D, Cat assist, Cat payload, 2D E-fence, pattern changer, auxiliary hydraulics, 24in. pads, quick coupler, digging bucket. 305 Working - Idled to 1,000 hours.



**2020 CAT 336GC** SN:GSF10143 powered by Cat diesel engine, equipped with Cab, air, heat, 360 degree cameras, 28in pads, quick coupler, digging bucket, 3,521 hours.

**2020 CAT 336** powered by Cat diesel engine, equipped with Cab, air, heat, pattern changer, 12ft. 9in. stick, stick & boom check valves, catwalks, 34in. TBG pas, hydraulic quick coupler, 72in. digging bucket, 6,012 hours.

**2020 CAT 336** powered by Cat diesel engine, equipped with Cab, air, heat, rear camera, pattern changer, auxiliary hydraulics, hydraulic tool control, hydraulic quick coupler, 48in. digging bucket, 4,490 hours.

**2019 CAT 336** SN:DKS00806 powered by Cat diesel engine, equipped with Cab, air, heat, 2D Cat Grade Control with Assist and Payload, 12ft. 10in. stick, 33in. pads, 60in. bucket.



**2019 CAT 336FL** Hammer Piping! ; GP Bucket ; Air Conditioned Cab w/ Heater ; H-Back Air Suspension Seat w/ Heater ; 33in. TG Shoes ; High Ambient Cooling ; Rear View Camera ; Reach Boom ; 12ft.10in. Stick ; DB-Family Linkage ; Segmented Track Guiding Guard ; 2-Way Hand Control Changer ; Cold Weather Package ; Work Lights & Mirrors ; Hyd. Q/C Available for Added Cost ; Tier 4 Final Engine.

**2018 CAT 336FL** powered by Cat diesel engine, equipped with Cab, air, heat, reach boom, 12ft. 10in. stick, 33.5in. pads, hydraulic quick coupler, 36in. digging bucket, New Cat long undercarriage. Cat 48in. 2.26 yard bucket w/ pins Sells Separately.



**2017 CAT 336F** Auxiliary Hydraulics ; Combined Circuit Package ; Air Conditioned Cab w/ Heater ; Reach Boom ; 10ft.6in. Stick ; GP Bucket ; Center Track Guiding Guard ; H-Back Air Suspension Seat w/ Heater ; High Ambient Cooling ; Rearview Camera ; Work Lights & Mirrors, 4,087 hours.



**NEW UNUSED CAT 335 3D** powered by Cat diesel engine, equipped with Cab, air, rearview camera, Cat 2D grade control, front blade, reach boom, 10ft. 6in. stick, combination hydraulics, compact radius, 28in. Pads, hydraulic quick coupler, digging bucket, long undercarriage. 36 Months, 5,000 Hours Warranty.



**2016 CAT 335FLCR** 54in. 2.02 CYD HD-Bucket ; Air Conditioned Cab w/ Heater ; Reach Boom / 12ft.4in. Stick ; High Back Air Suspension Seat w/ Heater ; 33in. TG Shoes ; Full Length Track Guide Guard ; CB2 Linkage ; Rear View Camera ; Tier 4 Final Engine ; X-County Machine.

**2018 CAT 330FL** powered by Cat diesel engine, equipped with Cab, air, heat, 10ft. 6in. Stick, auxiliary hydraulics, 34in. Pads, hydraulic quick coupler, digging bucket, long undercarriage, 5,547 hours.



**NEW UNUSED CAT 325 2D** powered by Cat diesel engine, equipped with Cab, air, heat, 360 degree cameras, Cat grade 2D, Cat assist, Cat Payload, 2D E-fence, combination auxiliary hydraulics, quick coupler, 28in. pads, digging bucket.

**2021 CAT 325 2D** SN:TEL11186 powered by Cat diesel engine, equipped with Cab, air, heat, 360 degree cameras, Cat grade 2D, Cat assist, Cat payload, 2D E-fence, pattern changer, auxiliary hydraulics, 32in. pads, quick coupler, digging bucket, 1,004 hours, 520 by Idling

**2019 CAT 325FLCR** SN:RBW20649 powered by Cat diesel engine, equipped with Cab, air, heat, 360 degree cameras, auxiliary hydraulics, 28in. Pads, quick coupler, digging bucket w/ hydraulic thumb, 3,900 hours.

**2021 CAT 323** powered by Cat diesel engine, equipped with Cab, air, Cat Grade Control with 2D, 9ft. 7in. stick, 32in. pads, hydraulic coupler, digging bucket, 3,900 hours.



**(7) NEW UNUSED CAT 320GC** powered by Cat diesel engine, equipped with Cab, air, heat, 360 degree cameras, pattern changer, auxiliary hydraulics, 24in. Pads, quick coupler, digging bucket.



**2023 CAT 320 2D** powered by Cat diesel engine, equipped with Cab, air, heat, 360 degree cameras, Cat grade 2D, Cat assist, Cat payload, 2D E-fence, auxiliary hydraulics, quick coupler, digging bucket, 1,000 hours.

**2021 CAT 320 2D** SN:MYK11035 powered by Cat diesel engine, equipped with Cab, air, heat, 360 degree cameras, Cat grade 2D, Cat assist, Cat payload, 2D E-fence, pattern changer, auxiliary hydraulics, 28in. pads, quick coupler, digging bucket, 1,824 hours.

**2021 CAT 320 2D** SN:MYK10463 powered by Cat diesel engine, equipped with Cab, air, heat, 360 degree cameras, Cat grade 2D, Cat assist, Cat payload, 2D E-fence, pattern changer, auxiliary hydraulics, 24in. pads, quick coupler, digging bucket, 800 hours.

**2021 CAT 320 2D** SN:MYK10499 powered by Cat diesel engine, equipped with Cab, air, heat, 360 degree cameras, Cat grade 2D, Cat assist, Cat payload, 2D E-fence, pattern changer, 32in. pads, quick coupler, digging bucket, 2,901 hours.

**2021 CAT 320 2D** SN:MYK11642 powered by Cat diesel engine, equipped with Cab, air, heat, 360 degree cameras, Cat grade 2D inc screen & receivers, Cat assist, Cat payload, 2D E-fence, pattern changer, auxiliary hydraulics, 24in. pads, quick coupler, digging bucket, 1,004 idle hours only.

**2021 CAT 320 2D** SN:MYK11236 powered by Cat diesel engine, equipped with Cab, air, heat, 360 degree cameras, Cat grade 2D, Cat assist, Cat payload, 2D E-fence, auxiliary hydraulics, 28in. pads, quick coupler, digging bucket w/ hydraulic thumb, 2,070 hours.

**2021 CAT 320 2D** SN:MYK10473 powered by Cat diesel engine, equipped with Cab, air, heat, auxiliary hydraulics, 24in. Pads, digging bucket, 1,000 hours.

**2018 CAT 320 2D** SN:HEX01262 powered by Cat diesel engine, equipped with Cab, air, heat, 360 degree cameras, Cat grade 2D, Cat assist, Cat payload, 2D E-fence, pattern changer, auxiliary hydraulics, 28in. pads, quick coupler, digging bucket w/ hydraulic thumb, 289 hours.



**2018 CAT 320 3D** SN:HEX01252 powered by Cat diesel engine, equipped with Cab, air, heat, 360 degree cameras, Cat grade 3D, Cat assist, Cat payload, 3D E-fence, quick coupler, digging bucket, 1,995 hours.



**2018 CAT 320** Comfort Cab w/ AC & Heater ; Reach Boom ; 9ft.6in. Stick ; Boom & Stick Grade Sensors ; 2D Grade w/ Assist & Payload ; TG Shoes ; 8in. Monitor ; GP Bucket w/ Teeth & Sidecutter ; Rearview Camera ; Center Track Guide Guard ; Pattern Changer ; Work Lights & Mirrors.



**2018 CAT 320** Auxiliary Hydraulics: Piped for Hammer & Thumb; Hydraulic Package ; Comfort Cab w/ AC & Heater ; Reach Boom ; 9ft.6in. Stick ; GP Bucket w/ Teeth & Sidecutters ; 8in. Monitor ; Rear & RH View Camera ; CAT Grade 2D w/ Assist & Payload ; Pattern Changer ; Work Lights & Mirrors.



**2018 CAT 320** powered by Cat diesel engine, equipped with Cab, air, heat, 9ft. 3in. Stick, 32in. Pads, Cat hydraulic quick coupler, 48in. Digging bucket w/ manual thumb, 4,074 hours.



**CAT 320DLC** SN:PHX00698 powered by Cat diesel engine, equipped with Cab, air, heat, digging bucket w/ hydraulic thumb, long undercarriage.



**(2) 2014 CAT 320E** GP Bucket w/ Teeth & Sidecutters ; Air Conditioned Cab w/ Heater ; Reach Boom ; 9ft.6in. Stick ; Rearview Camera ; TG Shoes ; Pattern Changer ; Work Lights & Mirrors.

**(2) NEW UNUSED CAT 315GC** powered by Cat diesel engine, equipped with Cab, air, heat, 360 degree cameras, pattern changer, front blade, auxiliary hydraulics, 20in. pads w/ rubber blocks, quick coupler, digging bucket.

**2024 CAT 315GC** SN:LYW30745 powered by Cat diesel engine, equipped with Cab, air, heat, 360 degree cameras, pattern changer, front blade, auxiliary hydraulics, 20in. pads w/ rubber blocks, quick coupler, digging bucket, 1,000 hours, 300 hours by idling.

**2022 CAT 315GC** Piping for Hammer, Thumb, Shear & Rotation ; Comfort Cab w/ AC & Heater ; 8ft.2in. Stick ; Tool Control System ; 8ft.2in. Blade ; 20in. TG Shoes w/ Rubber Pads ; Premium Lights ; GP Bucket w/ Teeth & Ditching Bucket ; Hydraulic Quick Coupler ; 8in. Monitor ; 8,490LB Counterweight ; Rear & RH View Camera ; Variable Speed Fan ; Long Undercarriage, 398 hours.

**2022 CAT 315 2D** powered by Cat diesel engine, equipped with Cab, air, heat, 360 degree cameras, Cat grade 2D, Cat assist, Cat payload, 2D E-fence, pattern changer, combination auxiliary hydraulics, 20in. pads w/ rubber blocks, quick coupler, digging bucket, 824 hours.

**2022 CAT 315 2D** powered by Cat diesel engine, equipped with Cab, air, heat, 360 degree cameras, Cat grade 2D, Cat assist, Cat payload, 2D E-fence, pattern changer, auxiliary hydraulics, 20in. pads, quick coupler, digging bucket, 997 idle hours only.

**2022 CAT 315 2D** powered by Cat diesel engine, equipped with Cab, air, heat, 360 degree cameras, Cat grade 2D, Cat assist, 2D E-fence, pattern changer, front blade, auxiliary hydraulics, 20in. pads, quick coupler, digging bucket w/ hydraulic thumb, 1,040 hours.



**2021 CAT 315GC** SN:LYW00265 powered by Cat diesel engine, equipped with Cab, air, heat, 360 degree cameras, pattern changer, front blade, 20in. Pads w/ rubber blocks, quick coupler, digging bucket, 1,637 hours.



**2021 CAT 315GC** SN:LYW00596 powered by Cat diesel engine, equipped with Cab, air, heat, 360 degree cameras, pattern changer, front blade, auxiliary hydraulics, 20in. pads, quick coupler, digging bucket w/ hydraulic thumb, 1,034 hours.

**2021 CAT 315GC** SN:LYW00166 powered by Cat diesel engine, equipped with Cab, air, heat, 360 degree cameras, pattern changer, front blade, auxiliary hydraulics, 20in. pads w/ rubber blocks, quick coupler, digging bucket, 1,564 hours.



**(2) NEW UNUSED CAT 313 2D** powered by Cat diesel engine, equipped with Cab, air, heat, 360 degree cameras, pattern changer, Cat grade 2D, Cat assist, Cat payload, 2D E-fence, auxiliary hydraulics, 28in. pads, quick coupler, digging bucket.



**NEW UNUSED CAT 313GC** powered by Cat diesel engine, equipped with Cab, air, heat, cab guard, 360 degree cameras, pattern changer, combination auxiliary hydraulics, 20in. pads w/ rubber blocks, quick coupler, digging bucket.

**2022 CAT 313GC** powered by Cat diesel engine, equipped with Cab, air, heat, 360 degree cameras, pattern changer, auxiliary hydraulics, 20in. pads w/ rubber blocks, quick coupler, digging bucket, 539 hours.

**2022 CAT 313GC** powered by Cat diesel engine, equipped with Cab, air, heat, 360 degree cameras, pattern changer, auxiliary hydraulics, 28in. Pads, digging bucket w/ hydraulic thumb, 790 hours.

**2022 CAT 313 2D** powered by Cat diesel engine, equipped with Cab, air, heat, 60 degree cameras, Cat grade 2D, pattern changer, Cat assist, Cat payload, 2D E-fence, front blade, auxiliary hydraulics, 20in. pads, quick coupler, digging bucket, 1,120 hours,

**2021 CAT 313GC** SN:NFZ10617 powered by Cat diesel engine, equipped with Cab, air, heat, 360 degree cameras, pattern changer, auxiliary hydraulics, 20in. Pads, quick coupler, digging bucket, 1,002 hours.



**2021 CAT 313GC** SN:NfZ10215 powered by Cat diesel engine, equipped with Cab, air, heat, 360 degree cameras, pattern changer, auxiliary hydraulics, 20in. Pads w/ rubber blocks, digging bucket, 3,158 hours.

**2021 CAT 313 2D** SN:JHR10339 powered by Cat diesel engine, equipped with Cab, air, heat, 360 degree cameras, pattern changer, Cat grade 2D, Cat assist, Cat payload, 2D E-fence, auxiliary hydraulics, 28in. pads, quick coupler, digging bucket w/ hydraulic thumb, 4,103 hours.

**2020 CAT 313GC** SN:NfZ00192 powered by Cat diesel engine, equipped with Cab, air, heat, 360 degree cameras, pattern changer, 20in. Pads w/ rubber blocks, quick coupler, digging bucket, 365 hours.

**2020 CAT 313 2D** SN:JHR00191 powered by Cat diesel engine, equipped with Cab, air, heat, 360 degree cameras, Cat grade 2D, pattern changer, Cat assist, Cat payload, 2D E-fence, auxiliary hydraulics, 20in. pads, quick coupler, digging bucket w/ hydraulic thumb, 927 hours.

**2020 CAT 311FLRR** SN:JFT11077 powered by Cat diesel engine, equipped with Cab, air, heat, rear camera, pattern changer, auxiliary hydraulics, 20in. Pads, quick coupler, digging bucket w/ hydraulic thumb, 1,535 hours.

**2020 CAT 311FLRR** SN:JFT11225 powered by Cat diesel engine, equipped with Cab, air, heat, rear camera, pattern changer, auxiliary hydraulics, 28in. Pads, quick coupler, digging bucket w/ hydraulic thumb, 1,360 hours.

**2020 CAT 311FLRR** SN:JFT11234 powered by Cat diesel engine, equipped with Cab, air, heat, rear camera, pattern changer, auxiliary hydraulics, 28in. Pads, quick coupler, digging bucket w/ hydraulic thumb, 2,469 hours.

**2016 CAT 311FLRR** SN:JFT00967 powered by Cat diesel engine, equipped with Cab, air, heat, rear camera, 24in. Pads, quick coupler, digging bucket, long undercarriage, 4,046 hours.

**2018 CAT 308E2CR** SN:FJX12325 powered by Cat diesel engine, equipped with Cab, air, heat, control valve, front blade, off-set boom, combination auxiliary hydraulics, 18in. steel pads w/ rubber blocks, quick coupler, digging bucket w/ hydraulic thumb.

**(4) 2020 CAT 305.5** powered by Cat diesel engine, equipped with OROPS, front blade, rubber tracks, quick coupler, digging bucket w/ thumb, 800 hours.

**UNUSED CAT 304** powered by Cat diesel engine, equipped with OROPS, front blade, rubber tracks, quick coupler, digging bucket.

**2023 HITACHI ZX890LCH-6** powered by diesel engine, equipped with Cab, air, heat, 27.55ft. Reach boom, 12.13ft. Stick, 25.59in. Pads, Rock bucket, long undercarriage, 1,002 hours by Idling Only.



**2022 HITACHI ZX225** SN:511445 powered by Isuzu diesel engine, 147hp, equipped with Cab, air, heat, windshield guard, backup camera, auxiliary hydraulics, reduced tail swing, 24in pads, 42in. Digging bucket, long undercarriage, 815 hours.



**2020 KOBELCO SK350LC-10** SN:YC14605105 powered by diesel engine, equipped with Cab, air, rear camera, 10ft 10in stick, auxiliary hydraulics, 36in pads, digging bucket, long undercarriage, 3,154 hours.



**2017 KOBELCO SK350LC-9E** SN:YC13-13095 powered by diesel engine, equipped with Cab, air, heat, 10ft 10in stick, auxiliary hydraulics, 34in pads, digging bucket, long undercarriage.



**2021 KOBELCO SK210LC** SN:5242 powered by diesel engine, equipped Cab, air, rear camera, 10ft stick, auxiliary hydraulics, 32in pads, digging bucket, long undercarriage, 2,877 hours.



**2021 KOBELCO SK210LC-10** SN:5241 powered by diesel engine, equipped with Cab, air, rear camera, 10ft stick, auxiliary hydraulics, digging bucket, long undercarriage, 2,109 hours.



**2019 KOBELCO SK210LC-10** SN:YQ15S00440 powered by diesel engine, equipped with Cab, air, heat, 10ft stick, auxiliary hydraulics, digging bucket, long undercarriage.



**2020 JOHN DEERE 350GLC** powered by John Deere diesel engine, equipped with Cab, air, heat, pattern changer, 13ft. 3in. Stick, auxiliary hydraulics, 32in. TBG pads, 40in. Digging bucket, long undercarriage, 2,974 hours.



**2015 JOHN DEERE 350GLC** SN:TFF810763 powered by John Deere diesel engine, equipped with Cab, air, heat, 13ft 1in stick, auxiliary hydraulics, 34in pads, digging bucket, long undercarriage, 5,006 hours.



**2023 JOHN DEERE 210G** powered by John Deere diesel engine, equipped with Cab, air, heat, digging bucket, 1,275 hours.

**Pre-bidding Open  
for all days!**







**2023 JOHN DEERE 210G** powered by John Deere diesel engine, equipped with Cab, air, heat, digging bucket, 1,458 hours.

**2018 JOHN DEERE 210GF** SN:1FF210GXHJF526264 powered by John Deere diesel engine, equipped with Cab, air, heat, digging bucket.

**2018 JOHN DEERE 210GLC** SN:1FF210GXCF525728 powered by John Deere diesel engine, equipped with Cab, air, heat, digging bucket, long undercarriage.

**2018 JOHN DEERE 210GLC** SN:1FF210GXEF525719 powered by John Deere diesel engine, equipped with Cab, air, heat, digging bucket, long undercarriage.



**2023 JOHN DEERE 160P** powered by diesel engine, equipped with Cab, air, heat, auxiliary hydraulics, digging bucket, 943 hours.



**2023 JOHN DEERE 135G** powered by John Deere diesel engine, equipped with Cab, air, heat, digging bucket, 735 hours.



**2023 JOHN DEERE 135G** powered by John Deere diesel engine, equipped with Cab, air, heat, digging bucket, 971 hours.



**2023 JOHN DEERE 130P** SN:000086 powered by John Deere diesel engine, equipped with Cab, air, heat, rear camera, 8ft 3in stick, auxiliary hydraulics, 24in pads, digging bucket, 542 hours.



**2023 JOHN DEERE 130P** SN:000089 powered by John Deere diesel engine, equipped with Cab, air, heat, rear camera, 8ft 3in stick, auxiliary hydraulics, 24in pads, digging bucket, 479 hours.



**2015 KOMATSU PC360LC-11** powered by Komatsu diesel engine, equipped with Cab, air, heat, auxiliary hydraulics, 34in. Pads, 60in. Digging bucket, long undercarriage, 6,169 hours.



**2019 DOOSAN DX350LC-5** SN:20285 powered by diesel engine, equipped with Cab, air, heat, 11ft stick, auxiliary hydraulics, 34in pads, digging bucket, long undercarriage.



**NEW DOOSAN DX140LC** powered by diesel engine, equipped with Cab, air, heat, rear camera, front blade, auxiliary hydraulics, 24in. Pads, 36in. Digging bucket, long undercarriage.

**2022 DOOSAN DX85R-3** powered by diesel engine, equipped with Cab, air, heat, front blade, off-set boom, combination auxiliary hydraulics, rubber tracks, quick coupler, digging bucket w/ hydraulic thumb, 2,607 hours.

**2021 DOOSAN DX85R-3** SN:6003271 powered by diesel engine, equipped with Cab, air, heat, front blade, off-set boom, combination auxiliary hydraulics, rubber tracks, quick coupler, digging bucket w/ hydraulic thumb, 1,381 hours.



**2021 LINKBELT 245X4** SN:LBX245Q7NKHEX1421 powered by diesel engine, equipped with Cab, air, heat, rear camera, 10ft. stick, auxiliary hydraulics, 32in. pads, digging bucket, 2,155 hours.



**2023 LINKBELT 145X4** powered by diesel engine, equipped with Cab, air, heat, digging bucket, 1,462 hours.



**2023 LINKBELT 145X4** SN:HEX2706 powered by diesel engine, equipped with Cab, air, heat, rear camera, 10ft stick, auxiliary hydraulics, 24in pads, coupler hydraulics, digging bucket, 989 hours.

**2021 SANY SY265CLC** SN:SY0261CB00188 powered by diesel engine, equipped with Cab, air, heat, cameras, combination auxiliary hydraulics, 28in. Pads, quick coupler, digging bucket, long undercarriage, 1,592 hours.

**2021 SANY SY155U** SN:27288 powered by diesel engine, equipped with Cab, air, heat, cameras, front blade, combination auxiliary hydraulics, 28in. Pads, hydraulic quick coupler, digging bucket, 1,989 hours.

**2023 SANY SY80U** powered by diesel engine, equipped with Cab, air, heat, front blade, off-set boom, combination auxiliary hydraulics, rubber tracks, quick coupler, digging bucket w/ hydraulic thumb, 408 hours.



**2023 SANY SY80U** powered by diesel engine, equipped with Cab, air, heat, front blade, off-set boom, combination auxiliary hydraulics, rubber tracks, quick coupler, digging bucket w/ hydraulic thumb, 465 hours.

**2021 SANY SY60C** powered by diesel engine, equipped with OROPS, front blade, rubber tracks, quick coupler, digging bucket w/ thumb, 600 hours.

**2021 SANY SY60C** powered by Cat diesel engine, equipped with OROPS, front blade, rubber tracks, quick coupler, digging bucket w/ thumb, 800 hours.



**2018 VOLVO EC250E** SN:310545 powered by Volvo diesel engine, equipped with Cab, air, heat, 10ft. stick, auxiliary hydraulics, 32in. pads, hydraulic coupler, digging bucket.

**2018 CASE CX210D** SN:NGS7H1547 powered by diesel engine, equipped with Cab, air, heat, digging bucket.

**NEW UNUSED CASE CX37C** powered by diesel engine, equipped with Cab, 2-speed, front blade, 2-way auxiliary hydraulics, additional counterweight, rubber tracks, digging bucket w/ thumb bracket.

**2023 KOMATSU PC80MR-5** powered by Komatsu diesel engine, equipped with Cab, air, heat, front blade, off-set boom, combination auxiliary hydraulics, road liner pads, quick coupler, digging bucket w/ hydraulic thumb, 1,092 hours.

**2023 KOMATSU PC80MR-5** powered by Komatsu diesel engine, equipped with Cab, air, heat, front blade, off-set boom, combination auxiliary hydraulics, road liner pads, quick coupler, digging bucket w/ hydraulic thumb, 611 hours.

**NEW UNUSED XCMG XE75U** SN:UTMKA00048 powered by Kubota diesel engine, equipped with cab, air, blade, auxiliary hydraulics, steel tracks with rubber pads, coupler hydraulics, bucket, 11 hours.

**(4) 2022 XCMG XE75U** powered by Kubota V2607 diesel engine, 60.3hp, equipped with Cab, air, heat, front blade, auxiliary hydraulics, steel track w/ rubber inserts, digging bucket.

**(3) 2022 XCMG XE55U** powered by Kubota V2403 diesel engine, 41.2hp, equipped with Cab, air, heat, front blade, auxiliary hydraulics, rubber tracks, digging bucket.



**(7) 2017 TAKEUCHI TB290C** powered by diesel engine, equipped with Cab, air, heat, front blade, rubber tracks, reduced tail swing, digging bucket.



**2017 TAKEUCHI TB280FR** SN:178500858 powered by diesel engine, equipped with Cab, air, heat, front blade, rubber tracks, reduced tail swing, digging bucket.

**2015 TAKEUCHI TB280FR** SN:178500121 powered by diesel engine, equipped with Cab, air, heat, front blade, rubber tracks, reduced tail swing, digging bucket.

**(3) 2019 TAKEUCHI TB260** powered by diesel engine, equipped with OROPS, front blade, auxiliary hydraulics, rubber tracks, digging bucket.

**(3) 2017 TAKEUCHI TB260R** powered by diesel engine, equipped with OROPS, front blade, rubber tracks, digging bucket.

**2019 TAKEUCHI TB240** SN:124003936 powered by diesel engine, equipped with OROPS, front blade, auxiliary hydraulics, rubber tracks, digging bucket.

**(4) 2017 TAKEUCHI TB240** powered by diesel engine, equipped with Cab, air, heat, front blade, rubber tracks, reduced tail swing, digging bucket.

**2019 TAKEUCHI TB230** SN:130004661 powered by diesel engine, equipped with OROPS, front blade, auxiliary hydraulics, rubber tracks, digging bucket.

**2018 TAKEUCHI TB216** SN:216101453 powered by diesel engine, equipped with OROPS, front blade, rubber tracks, digging bucket.

**2018 BOBCAT E55** SN:AJ1912682 powered by diesel engine, equipped with Cab, air, heat, 2-speed, auxiliary hydraulics, rubber tracks, quick coupler, digging bucket w/ hydraulic thumb.



**2017 BOBCAT E50** SN:AJ1813330 powered by Kubota diesel engine, 49hp, equipped with OROPS, front blade, auxiliary hydraulics, rubber tracks, coupler, hydraulic thumb, 5,650 hours. NO BUCKET

**2022 BOBCAT E42** powered by diesel engine, equipped with OROPS, front blade, auxiliary hydraulics, rubber tracks, hydraulic quick coupler, digging bucket w/ hydraulic thumb, 500 hours.

**2022 BOBCAT E42** powered by diesel engine, equipped with OROPS, front blade, auxiliary hydraulics, rubber tracks, hydraulic quick coupler, digging bucket w/ hydraulic thumb, 1,000 hours.

**2022 BOBCAT E42** powered by diesel engine, equipped with OROPS, 2-speed, front blade, auxiliary hydraulics, rubber tracks, quick coupler, digging bucket w/ hydraulic thumb, 528 hours.

**2021 BOBCAT E42** SN:B4GM13221 powered by diesel engine, equipped with OROPS, 2-speed, front blade, rubber tracks, digging bucket w/ hydraulic thumb.

**2022 BOBCAT E10** powered by diesel engine, equipped with OROPS, front blade, 2-way auxiliary hydraulics, rubber tracks, digging bucket, 830 hours.

**2022 KUBOTA KX080-4A2** SN-77019 powered by Kubota diesel engine, equipped with Cab, air, heat, swing boom, auxiliary hydraulics, rubber tracks, hydraulic quick coupler, digging bucket w/ hydraulic thumb, 1,860 hours.

**2022 KUBOTA KX080-4A2** powered by Komatsu diesel engine, equipped with Cab, air, heat, front blade, off-set boom, combination auxiliary hydraulics, road liner pads, quick coupler, digging bucket w/ hydraulic thumb, 1,805 hours.

**2022 KUBOTA KX080-4A2** powered by Kubota diesel engine, equipped with Cab, air, heat, swing boom, auxiliary hydraulics, rubber tracks, hydraulic quick coupler, digging bucket w/ hydraulic thumb, 2,300 hours.

**2022 KUBOTA KX080-4A2** powered by Kubota diesel engine, equipped with Cab, air, heat, swing boom, auxiliary hydraulics, rubber tracks, hydraulic quick coupler, digging bucket w/ hydraulic thumb, 1,800 hours.

**2018 KUBOTA K008T4** SN:42472 powered by Kubota diesel engine, equipped with OROPS, front blade, rubber tracks, digging bucket.

**2018 WACKER 803-DP** SN:WNCE0801JPAL02465 powered by diesel engine, equipped with OROPS, front blade, rubber tracks, digging bucket.



**(3) NEW MIVA VA13** powered by gas engine, equipped with auxiliary hydraulics, front blade, 16in. Digging bucket.

## LONG REACH EXCAVATORS



**CAT 324EL** powered by Cat diesel engine, equipped with Cab, air, heat, 60ft. reach boom & stick, 60in. ditching bucket, long undercarriage.

**CAT 324EL** powered by Cat diesel engine, equipped with Cab, air, heat, 60ft. reach boom & stick, 60in. ditching bucket, long undercarriage.





**2021 LINKBELT 250X4 LR**  
SN:LBX250Q7NLLRX1688 powered by diesel engine, equipped with Cab, air, heat, 60ft. Reach boom & stick, digging bucket, 3,045 hours.

### RUBBER TIRED EXCAVATOR



**2004 GRADALL XL3100 4 X 4** ; Enclosed Cabs w/ AC & Heat ; 60in. Ditching Bucket ; Eaton Fuller 9 Speed Transmission ; Differential Lock ; Work Lights & Mirros ; X-County Machine.

### DEMOLITION EXCAVATORS



**2005 CAT 345BL II UDH 86ft.** Ultra High, 3 Section, CAT Demolition Front ; 6,600lb Tool Weight (over front) ; Air Conditioned Cab w/ Heater & Top/ Front Guards ; Hydraulic Adjustable Wide Gauge Undercarriage ; Standard Boom, Stick & Bucket ; DG Shoes ; Auxiliary Hydraulics ; Transport/Storage Cradles ; Work Lights & Mirrors any Destination\* 7,232 hours.



**2015 HITACHI ZX350-5 UHD 69ft.** Ultra High, 3 Section, Demolition Front ; Hydraulic Tilting Cab w/ Guarding, AC & Heater ; Standard Boom & Stick ; Auxiliary Hydraulics for Hammer, Shear & Rotation ; TG Shoes ; Track Guide Guards ; Rearview Camera ; Check/Safety Valves on Boom & Stick Cylinders ; Transport/Storage Cradles ; Work Lights & Mirrors any Destination\*.

### STEEL SHEARS



**GENESIS GXP400R** Shear Weight: 11,000 Lbs. ; Jaw Depth: 29in. / Jaw Opening: 28in. ; Reach: 11ft.7in. ; Minimum Excavator Weight Boom Mount: 55,000 Lbs. ; Minimum Excavator Weight Stick Mount: 90,000 Lbs. ; 360 degree Rotation ; 2nd Member Mounting Bracket ; Very Good Condition & Appearance.



**LABOUNTY MSD1500R** Shear Weight: 7,440 Lbs. ; Jaw Opening: 21in. ; Jaw Depth: 25in. ; Reach: 10ft. ; Minimum Excavator Weight Boom Mount: 40,000 Lbs. ; Minimum Excavator Weight Stick Mount: 66,000 Lbs. ; 360 degree Rotation ; Very Good Condition & Appearance ; \*New Blade Kit\*.

### HYDRAULIC ROTATING SHEARS

**(2) NEW TERAN HYDRAULIC ROTATING SHEARS** to fit various model & size excavators. (Please Refer to lyonauction.com for detailed listing).

### 8 CONCRETE PULVERIZERS

**(8) NEW TERAN CONCRETE PULVERIZERS** to fit various model & size excavators. (Please Refer to lyonauction.com for detailed listing).

### 4 CRUSHERS

**(4) NEW TERAN CRUSHERS** to fit various model & size excavators. (Please Refer to lyonauction.com for detailed listing).

### 34 HYDRAULIC HAMMERS

**(31) NEW TERAN, TROJAN HYDRAULIC HAMMERS** to fit various model & size excavators. (Please Refer to lyonauction.com for detailed listing).

**CAT H180DS** carrier weight: 80-160,000lb machines.

**CAT H160DS** carrier weight: 64-110,000lb machines.

**CAT H130DS** carrier weight: 38-64,000lb machines.

### 15 GRAPPLES

**(15) NEW TERAN HYDRAULIC, ROTATING, & MANUAL GRAPPLES** to fit various model & size excavators. (Please Refer to lyonauction.com for detailed listing).

### 9 EXCAVATOR RAKES

**(9) NEW TERAN EXCAVATOR RAKES** to fit various model & size excavators. (Please Refer to lyonauction.com for detailed listing).

### 36 EXCAVATOR RIPPERS

**(36) NEW TERAN RIPPERS** to fit various model & size excavators. (Please Refer to lyonauction.com for detailed listing).

### 32 EXCAVATOR THUMBS

**(32) NEW TERAN & TROJAN HYDRAULIC & MANUAL THUMBS** to fit various model & size excavators. (Please Refer to lyonauction.com for detailed listing).

### 134 EXCAVATOR BUCKETS

**(134) NEW TERAN & TROJAN BUCKETS** ranging from 90in. To 12in., to fit various model & size excavators. (Please Refer to lyonauction.com for detailed listing).

### 135 EXCAVATOR ATTACHMENTS

**(135) NEW TERAN COMPACTORS, COUPLERS, PINS, ROLLERS, IDLERS, LINKS** to fit various model & size excavators. (Please Refer to lyonauction.com for detailed listing).

### 45 CRAWLER TRACTORS

**2022 CAT D8T** SN:AW401599 powered by Cat diesel engine, equipped with EROPS, air, heat, SU blade, 28in. Pads, Cat single shank ripper with hydraulic pin puller, AccuGrade ready, 1,045 hours.



**2020 CAT D8T EROPS** Cab w/ AC & Heater ; SU Blade w/ Tilt ; Single Shank Ripper ; 24in. ES Shoes ; Heated & Ventilated Seat ; High Speed Oil Change System ; Work Lights & Mirrors ; \*PowerTrain & Hydraulic Warranty Remaining\* , 2,959 hours.



**2012 CAT D8T EROPS** Cab w/ AC & Heat ; 8SU Blade w/ Dual Tilt ; 26in. ES Shoes ; Multi Shank Ripper ; 8.5 FPI Radiator ; High Speed Oil Change System ; Dual Tilt Fan ; Air Suspension Cloth Seat ; Premium Lights ; Suspended Carrier Rollers ; Push Arm Grab Handles.

**2011 CAT D8T** Tier 3 Engine, EROPS Cab w/AC & Heat, 8SU Blade w/Tilt Cylinder, 26in. ES Shoes, 4 BBL Single Shank Ripper, Work lights & Mirrors, Oil Change System, One previous owner, Excellent

**Please refer to lyonauction.com for an update to date listing**





**2005 CAT D8T** Reconditioned, EROPS Cab w/ AC Et Heater ; 8SU Blade w/ Tilt Cylinder ; Carrier Rollers 28in. MS Shoes ; Rear Screen ; Counterweight ; Work Lights ; Radiator Guard.



**NEW UNUSED CAT D6** powered by Cat diesel engine, equipped with EROPS, air, heat, SU blade, 22in pads, rear ripper, 3D grade control.



**NEW UNUSED CAT D6** powered by Cat diesel engine, equipped with EROPS, air, heat, SU blade, 3D grade control, multi-shank rear ripper.



**(2) NEW UNUSED CAT D6LGP** powered by Cat diesel engine, equipped with EROPS, air, heat, rear camera, 6 way blade, wide pads, ripper valve, drawbar, ARO ready.

**2022 CAT D6LGP** powered by Cat diesel engine, equipped with EROPS, air, heat, rear camera, 6 way foldable blade, 30in. Pads, 3-shank rear ripper, ARO ready, 426 hours.



**2020 CAT D6TXL** powered by Cat diesel engine, equipped with EROPS, air, heat, 125in. Semi-U blade w/ tilt, front Et rear auxiliary hydraulics, 24in. pads, Grade Control Ready, counterweight, drawbar, long track frame, 4,082 hours.

**2018 CAT D6T** SN:NDY00450 powered by Cat diesel engine, equipped with EROPS, 6 way blade.



**2011 CAT D6T-XW** powered by Cat diesel engine, equipped with EROPS, Semi-U blade w/ tilt, waste handler, pull bar, new undercarriage, 9,113 hours.

**CAT D6TLGP** SN:KJL00846 powered by Cat diesel engine, equipped with EROPS, air, heat, U blade w/ tilt, wide pads. Cat dealer maintained, rebuilt trans/ torque converter/pil pump Et updates-10 hours, New complete Cat undercarriage-200 hours.

**2019 CAT D6NLGP** powered by Cat diesel engine, equipped with EROPS, air, heat, 6 way blade, 33in. pads, Accugrade ready, recently replaced system one undercarriage, one owner machine.



**2019 CAT D6NLGP** SN:SGG00553 powered by Cat diesel engine, equipped with EROPS, air, heat, 6 way foldable blade, 3,023 hours.

**2019 CAT D6** SN:HNK00300 powered by Cat diesel engine, equipped with EROPS, 6 way blade.



**2018 CAT D6K2LGP** powered by Cat diesel engine, equipped with EROPS, air, het, 6 way blade, Grade control, GPS ready, wide pads, 4,325 hours.



**2020 CAT D5K2LGP** powered by Cat diesel engine, equipped with EROPS, air, heat, rear camera, autolube, hydstat transmission, 10ft. 4in. 6 way blade, 26in. pads, drawbar, pre-wired for grade control, System One undercarriage, 6,024 hours.

**2020 CAT D5K2LGP** powered by Cat diesel engine, equipped with EROPS, air, heat, rear hydraulics, wide pads, 6 way blade, GPS.



**2018 CAT D5K2LGP** SN:KY203791 powered by Cat diesel engine, equipped with EROPS, air, heat, rear screen, 6 way blade, wide pass, Accugrade ready, Grade Control, New Cat Undercarriage,



**2018 CAT D4KLGP** SN:KR202606 powered by Cat diesel engine, equipped with OROPS, 6 way blade, wide pads, 2,582 hours.



**2018 CAT D4KLGP** SN:KR202635 powered by Cat diesel engine, equipped with OROPS, 6 way blade, wide pads, 2,221 hours.

**2018 CAT D4KLGP** SN:KR202650 powered by Cat diesel engine, equipped with OROPS, 6 way blade, 25in. Pads, drawbar, 1,867 hours.

**NEW UNUSED CAT D3LGP** powered by Cat diesel engine, equipped with EROPS, air, heat, rear camera, 6 way blade, wide pads, ARO ready, drawbar.

**2023 CAT D3** powered by Cat diesel engine, equipped with EROPS, air, sweeps, rear screen, AccuGrade Ready, Grade Control, Paccar winch, 6 way blade, 250 hours.



**2020 CAT D3L2XL** powered by Cat diesel engine, equipped with EROPS, air, heat, rear camera, heated/cooled seat, 6 way blade, Sitech ready, Grade control, long track frame, 2,200 hours.

**2019 CAT D3K2LGP** SN:KL207596 powered by Cat diesel engine, equipped with OROPS, sweeps, screens, 6 way blade, 25in. Pads, drawbar.



**2019 CAT D3K2LGP** EROPS Cab w/ AC & Heater ; 6 Way, VPAT Blade ; 25in. LGP Shoes ; Accugrade Ready ; Grade w/ SA ; Full HD Track Roller Guard ; Work Lights & Mirrors ; Drawbar, 2,045 hours.

**CAT D3K2LGP** SN:KLL00550 powered by Cat diesel engine, equipped with EROPS, air, heat, 6 way blade, wide pads, drawbar, 2,626 hours.



**(2) NEW UNUSED CAT D1** powered by Cat diesel engine, equipped with EROPS, air, heat, 6 way blade, 15.9in. Pads.



**2021 CAT D1LGP** SN:XXL00441 powered by Cat diesel engine, equipped with OROPS, rear camera, 6 way blade, wide pads, 1,440 hours.

**2023 DEMO DOOSAN DD100**

SN:DWGCDZACKN1010079 powered by diesel engine, 122hp, equipped with EROPS, air, heat, 6 way blade, GPS ready, long track frame, 91 hours.



**2023 JOHN DEERE 650P** powered by John Deere diesel engine, equipped with EROPS, air, heat, screens, sweeps, 6 way blade, wide pads, drawbar, root rake brackets, 821 hours.



**2022 JOHN DEERE 650KLGP** powered by John Deere diesel engine, equipped with EROPS, air, heat, 6 way blade, wide pads, 1,220 hours. 4YR / 5K HR WNTY TO 7/30/26.



**2018 JOHN DEERE 650KLGP** powered by John Deere diesel engine, equipped with EROPS, air, heat, sweeps, screens, 6 way blade, wide pads, 2,420 hours.



**2024 JOHN DEERE 450PLGP**

SN:1T0450PATPMX05719 powered by John Deere diesel engine, equipped with EROPS, air, heat, screens, sweeps, 6 way blade, wide pads, drawbar, 148 hours.



**2016 JOHN DEERE 450J** SN:LGD292840 powered by John Deere diesel engine, equipped with OROPS, 6 way blade.

**2016 JOHN DEERE 450J** SN:291700 powered by John Deere diesel engine, equipped with OROPS, 6 way blade, wide pads. New undercarriage 1,200 hours ago.

**2015 JOHN DEERE 450J** SN:278876 powered by John Deere diesel engine, equipped with OROPS, 6 way blade, wide pads.

**JOHN DEERE 450JLGP** SN:291700 powered by John Deere diesel engine, equipped with OROPS, 6 way blade, wide pads.

**JOHN DEERE 450JLGP** SN:278876 powered by John Deere diesel engine, equipped with OROPS, 6 way blade, wide pads.



**2022 KOMATSU D39PX-24** powered by Komatsu diesel engine, equipped with EROPS, air, heat, rear camera, 6 way blade, 1,200 hours.

**2018 KOMATSU D39PX-24** SN:95905 powered by Komatsu diesel engine, equipped with EROPS, air, heat, 6 way blade.

## 21 CRAWLER TRACTOR ATTACHMENTS

**NEW TERAN S/F ROLLER GROUP** for CAT D8N/R/T - (CR4528) (1969947).

**(2) NEW TERAN S/F ROLLER GROUP** for CAT D6R/T (D6H/D) - (CR6088) (CR3634) (1181617) (9G8029) (2313087).

**CAT D9K WINCH**

**(2) CAT D8R WINCH**

**(2) CAT D6R/T WINCH**

**NEW CAT D6M WINCH**

**NEW CAT D3 WINCH**

**NEW TERAN 96IN. ROOT RAKE** for CAT D3-D5.

**NEW TERAN D/F ROLLER GROUP** for CAT D8N/R/T - (CR4529) (1969946).

**(2) NEW TERAN D/F ROLLER GROUP** for CAT D6R/T (D6H/D) - (CR6089) (CR3635) (1181618) (9G8034) (2313088).

**NEW TERAN TLA 44 LKS** for CAT D8N/R/T 44 LKS SALT - (CR4525/44).

**NEW TERAN TLA SALT-HD 41 LKS 3/4" BH** FOR CAT D6H/R/T - (CR5534/41) (CR4810/41).

**NEW TERAN TLA SALT-HD 39 LKS 3/4" BH** FOR CAT D6H/R/T - (CR5534/39) (CR4810/39).

**(2) NEW TERAN IDLER ASSY REAR** for CAT D8N/R/T.

**NEW TERAN IDLER W/ SHAFT SM DIA** FOR CAT D6R/T (D6H).

**NEW TERAN IDLER W/ SHAFT LG** for CAT D6R/T (D6H) - (CR4616)(2024304).

## 5 CRAWLER CARRIERS



**2019 MOROOKA MST2200VD** SN:A2202235 powered by Cat C7.1 diesel engine, equipped with EROPS, air, heat, rear camera, dump body, rubber tracks, 3,950 hours.





**2019 MOROOKA MST2200VD** SN:A2202225 powered by Cat C7.1 diesel engine, equipped with EROPS, air, heat, rear camera, flatbed dump body, track mounted, 3,750 hours.



**2019 TERRAMAC RT9** SN:9H00347 powered by diesel engine, equipped with EROPS, air, heat, rear view camera, 12ft. flatbed dump body, 28in. Rubber tracks, 631 hours.

**2018 TERRAMAC RT9** SN:9G0308 powered by diesel engine, equipped with EROPS, air, heat, rear view camera, contractor dump body with tailgate, Rubber tracks, 1,002 hours.

**2019 TERRAMAC RT6** SN:6EH00068 powered by diesel engine, equipped with EROPS, air, heat, rear view camera, flatbed dump body, Rubber tracks.

### CRAWLER LOADER



**2024 CAT 963** SN:LTT01067 powered by Cat diesel engine, equipped with EROPS, air, heat, GP bucket w/ teeth, ripper valve, 112 hours.

### 3 DETACHABLE GOOSENECK TRAILERS

**(3) NEW UNUSED WITZCO RG52** 104,000# load capacity, 3 axles with 48' overall length. Removable gooseneck, 8'6" wide, level deck style. Ground bearing, 2 angle scraper gooseneck with self-contained hydraulic system. 22' load deck, tapered front beam, 2" lumber decking & (24) 12" outriggers (12 each side). 3 "D" rings per side of deck & 2 on front stumps at tire area. Hutch 9700 spring suspension, 25,000# capacity axles, 16.5" x 7" air brakes, uni-mount wheels with 255/70 R22.5 Radial tires. Modular wire harness, rubber mounted sealed lights, DOT approved. FET APPLIES

### 3 TAGALONG TRAILERS

**(3) NEW 2025 DELTA 27TB 20FT.** equipped with 16ft. Tilt deck, 4ft. Fixed deck, 14,000lb capacity, (2) 7,000lb axles, 235/80R16 tires, HD jack, adjustable hitch, chain storage, LED lights, tandem axle.

### ALSO SELLING ON DAY 8

Please refer to [lyonauction.com](http://lyonauction.com) for an up-to-date listing.

- MINI TIRED LOADERS
- MINI TRACK LOADERS
- MINI TRACKED DUMPERS
- CONTAINERS
- STORAGE BUILDINGS
- UTILITY VEHICLES
- GOLF CARTS
- RECREATIONAL VEHICLES
- BOUNCE HOUSES
- PARTY RENTAL TENTS
- PRESSURE WASHERS

OVER 200 LOTS OF NEW SUPPORT EQUIPMENT  
WHOLE HOUSE GENERATORS

## DAY 9 SATURDAY, FEBRUARY 8

Dump Trucks (Tri-Tandem-Single), Truck Tractors, Cab & Chassis, Rolloff Trucks, Rollback Trucks, Bucket Trucks, Cement Mixer Trucks, Refuse Trucks, Military Trucks, Pickup Trucks, Utility Trucks, Exotic Cars, Motorcycles, SUV's, Automobiles, Vans, Steel Beam Trailers, Equipment Trailers, Rolloff Trailers, Roll-Off Boxes, Dump Trailers, Drop Deck Trailers, Tagalong Trailers, Flatbed Trailers, Containers, Van Trailers, Small Quantity Hydraulic Excavators, Telescopic Forklifts, Forklifts, Aerials, Skid Steers, Skid Steer Attachments, Utility Vehicles, Recreational Vehicles, Pumps, Generators, New Tools & Support Equipment, Portable Bathrooms.

### 30 TRUCK TRACTORS



**2025 PETERBILT 589** powered by Cummins X15 diesel engine, 565hp, equipped with 18 speed transmission, power steering, a/c, 46,000lb rears, full lockers, air ride suspension, 11R24.5 tires, tandem axle. FET has been paid. Manufacturer's Warranty.

**2025 PETERBILT 589** powered by Cummins X15 diesel engine, 565hp, equipped with 18 speed transmission, power steering, a/c, 46,000lb rears, full lockers, air ride suspension, 11R24.5 rear tires, tandem axle. FET has been paid. Manufacturer's Warranty.

**2025 PETERBILT 589** VN:NA powered by Cummins X15 diesel engine, 605hp, equipped with Eaton Fuller RTLO2091813 18 speed transmission, power steering, premiere alpine gray interior, 100 gallon right side split tank (50 gallon fuel tank, 50 gallon hydraulic tank), 60 gallon left side fuel tank, 72in. Holland severe duty slide fifth wheel, Dana Spicer D46-172 46,000lb rears, 3.73 ratio, air trac 46,000lb 54in. spacing, Watson & Chalin SL13 pusher lift axle, high polished Ultra one technology aluminum rims, Michelin 11R24.5 X-line energy front tires, Michelin 255/70R22.5 XZE pusher tires, Michelin 11R24.5 rear tires, triaxle. Pearl white w/ black frame. Peterbilt standard truck warranty 1 year / 100,000 miles, Electrical extended warranty (includes DEF system) 4 years / 500,000 miles, Cummins Series X15 Performance engine warranty (major components & driveline) 4 years / 400,000 miles. FET TAX has been Paid



**2025 PETERBILT 567** powered by Paccar MX diesel engine, 510hp, equipped with 18 speed transmission, power steering, a/c, 46,000lb rears, full lockers, 11R24.5 tires, tandem axle. FET has been paid. Manufacturer's Warranty.



**2025 PETERBILT 567** powered by Cummins X15 diesel engine, 565hp, equipped with 18 speed transmission, power steering, a/c, 2-line wet system, fenders, 70 ton 5th wheel, 20,000lb fronts, 20,000lb pusher, 46,000lb rears, full lockers, New Way air ride suspension, 315/22.5 front and pusher tires, 11R24.5 rear tires, triaxle. FET has been paid. Manufacturer's Warranty.

**2020 PETERBILT 567** VN:1XPCDP9XXLD731797 powered by Paccar 12 diesel engine, equipped with 13 speed transmission, power steering, wet lines, 200in. Wheelbase, tandem axle, 204,364 miles.

**2020 PETERBILT 389** powered by diesel engine, 565hp, equipped with Eaton Fuller 18 speed transmission, power steering, 44in. sleeper, double frame, air ride suspension, 46,000lb rears, tandem axle.







**2019 PETERBILT 389** VN:262026 powered by Cummins ISX diesel engine, 605hp, equipped with 18 speed transmission, 2050 torque, power steering, wet line, engine brake, a/c, cruise, platinum interior, 72in. Sleeper, heavy duty single frame, Pete air track, full lockers, 20,000lb steerable air lift axle, 46,000lb rears, 298in. Wheelbase, 11R24.5 tires, triaxle. One owner, one driver.

**(6) 2018 PETERBILT 337** powered by Paccar PX-9 diesel engine, equipped with automatic transmission, power steering, dual wheel single axle.



**2025 KENWORTH T880 HEAVY HAUL** powered by Cummins X15 diesel engine, 565hp, equipped with Eaton 18 speed automatic transmission, power steering, sleeper, 20,000lb fronts, 46,000lb rears, 248in. Wheelbase, 4.10 ratio, double frame, double lockers, 11R24.5 tires, air lift third axle, triaxle, 171 miles. FET has been paid, Remaining Warranty.

**2025 KENWORTH T880 HEAVY HAUL** powered by Cummins X15 diesel engine, 565hp, equipped with Eaton 18 speed automatic transmission, power steering, sleeper, 20,000lb fronts, 46,000lb rears, 248in. Wheelbase, 4.10 ratio, double frame, double lockers, 11R24.5 tires, air lift third axle, triaxle. FET has been paid, Remaining Warranty.

**2020 KENWORTH T880** VN:1XKZD49X4LJ387223 powered by Cummins ISX diesel engine, 500hp, equipped with Eaton Fuller 10 speed transmission, power steering, wet lines, 200in. Wheelbase, tandem axle.



**2007 KENWORTH W900** VN:185554 powered by Cat C15 diesel engine, equipped with 18 speed transmission, power steering, sleeper, factory double frame, steerable air lift third axle, triaxle.



**(8) 2019 MACK ANTHEM 64T** powered by Mack MP8 diesel engine, 505hp, equipped with Mack TMD14AFO M drive 14 speed automatic transmission, power steering, a/c, (2) fuel tanks, engine block heater, cruise, Jake brake, 3.42 ratio, 46,000lb rears, 197in. Wheelbase, Michelin 11R22.5 tires, tandem axle.



**(3) 2017 FREIGHTLINER CASCADIA 125** powered by Detroit DD13 12.8L diesel engine, 410hp, equipped with Eaton Fuller 10 speed automatic transmission, a/c, (2) aluminum fuel tanks, power steering, cruise, jake brake, 3.36 ratio, 178in. Wheelbase, 295/75R22.5 tires, tandem axle.

**2016 FREIGHTLINER CASCADIA** VN:SGX3165 powered by diesel engine, equipped with power steering, tandem axle.

## 5 DUMP TRUCKS



**2025 PETERBILT 567** powered by Paccar MX diesel engine, 510hp, equipped with Eaton Fuller 18 speed automatic transmission, power steering, a/c, 17ft. 6in. Brandon Dump body, 3-coal doors, tarp system, 20,000lb fronts, 20,000lb pusher, 46,000lb rears, 385/22.5 front and pusher tires, 11R24.5 rear tires, triaxle. FET has been paid. Manufacturer's Warranty.

**2024 PETERBILT 567** powered by Cummins X15 diesel engine, 525hp, equipped with Allison 4500 automatic transmission, power steering, jake brake, 16ft. Load King dump body, 18 yard capacity, high lift gate, 20,000lb fronts, 20,000lb steerable pusher, 46,000lb rears, double frame, triaxle. FET has been paid. Manufacturer's Warranty.

**2019 PETERBILT 389** VN:1NPXXPEX9KD274679 powered by diesel engine, equipped with power steering, dump body, triaxle.

**2017 PETERBILT 567** VN:N/A powered by Paccar 12.9L 13MX 6 cylinder diesel engine, equipped with Allison 6 speed automatic transmission, power steering, engine brake, Roc Tec 16ft. Steel dump body, tarp, air gate, 44,000lb rears, 204in. wheelbase, Pete ir trac suspension, aluminum wheels, 425/65/22.5 front float tires, air lift third axle, triaxle.



## 2020 FREIGHTLINER 122SD

VN:3ALHGNDR5LDLW5374 powered by Detroit 14.8L diesel engine, equipped with Allison RDS4500 automatic transmission, power steering, 19ft. Brandon dump body, 46,000lb rears, (2) steerable pusher axles, quad axle, 268,921 miles.

## 6 CAB & CHASSIS



## 2025 FORD E350 CUTAWAY

VN:1FDWE3FN2SDD00002 powered by 7.3L V8 premium rated gas engine, equipped with 6 speed automatic transmission, power steering, captain chairs, interior upgrade package cutaway, power equipment group, 12,500lb GVWR, 4.56 ratio, 176in. wheelbase, LT225/75R16E tires, dual wheel single axle, 5,090 miles



**2019 FORD F550** VN:C14289 powered by gas engine, equipped with automatic transmission, power steering, dual wheel single axle, 175,790 miles.



**2017 FORD F550** VN:A00640 powered by gas engine, equipped with automatic transmission, power steering, dual wheel single axle, 110,666 miles.

**2019 FORD F450** VN:C13090 4x4, powered by gas engine, equipped with automatic transmission, power steering, tire 208,570 miles.

**2020 FREIGHTLINER M2** VN:LS7359 powered by diesel engine, equipped with automatic transmission, power steering, dual wheel single axle, 126,715 miles.



**2019 FREIGHTLINER M2** VN:KL4977 powered by diesel engine, equipped with automatic transmission, power steering, dual wheel single axle, 183,535 miles.

## 6 FLATBED TRUCKS



**2021 DODGE 5500** VN:204762 powered by 6.4L Hemi V8 gas engine, 410hp, equipped with automatic transmission, power windows, locks and mirrors, flatbed body, fifth wheel hitch, dual wheel single axle, 24,558 miles.



**2022 DODGE 5500** VN:204767 4x4, powered by 6.4L Hemi V8 gas engine, 410hp, equipped with automatic transmission, power windows, locks and mirrors, flatbed body, fifth wheel hitch, dual wheel single axle, 20,815 miles.

**2022 DODGE 5500** VN:204740 powered by 6.4L Hemi V8 gas engine, 410hp, equipped with automatic transmission, power steering, flatbed body, fifth wheel hitch, dual wheel single axle, 24,081 miles.

**2022 DODGE 5500** VN:204753 powered by 6.4L Hemi V8 gas engine, 410hp, equipped with automatic transmission, power steering, flatbed body, fifth wheel hitch, dual wheel single axle, 24,081 miles.



**2022 DODGE 5500** SN:204761 powered by 6.4L Hemi V8 gas engine, 410hp, equipped with automatic transmission, power windows, locks and mirrors, flatbed body, fifth wheel hitch, dual wheel single axle, 13,180 miles.

**2022 DODGE 5500** VN:204770 powered by 6.4L Hemi V8 gas engine, 410hp, equipped with automatic transmission, power steering, flatbed body, fifth wheel hitch, dual wheel single axle, 13,729 miles.

## FLATBED DUMP TRUCK

**2016 INTERNATIONAL 7600** VN:277235 powered by Cummins N14 diesel engine, 475hp, equipped with Allison RDS 4500 Allison automatic transmission, power steering, 24ft. flatbed dump body w/ sides, tandem axle, 183,000 miles.

## 14 UTILITY TRUCKS



**2021 CHEVY TIRE** VN:178577 4x4, powered by gas engine, equipped with automatic transmission, power steering, tire utility body, 156,665 miles.



**2019 CHEVY 3500** VN:143868 powered by gas engine, equipped with automatic transmission, power steering, cage body, 181,109 miles.



**2019 CHEVY 3500** VN:138236 powered by 6.0L gas engine, equipped with automatic transmission, power windows, locks and mirrors, utility body, rear lift gate, dual rear wheels, 149,445 miles.



**2019 CHEVY 3500** VN:177037 4x4, powered by gas engine, equipped with automatic transmission, power steering, crew cab, utility body, 152,001 miles.



**2016 FORD F550** VN:1FDUF5GT1GEB06592 powered by diesel engine, equipped with automatic transmission, power steering, tire utility body, Stellar 3200 crane, air compressor, dual rear wheels, 196,169 miles.



**2015 FORD F550** VN:1FDUF5GT2FEC91606 powered by diesel engine, equipped with automatic transmission, power steering, cage utility body, 146,843 miles.

**2019 FORD F350** VN:C44594 4x4, powered by gas engine, equipped with automatic transmission, power steering, crew cab, utility body, 135,886 miles.



**2019 FORD F350** VN:F20933 powered by gas engine, equipped with automatic transmission, power steering, liftgate, tool boxes, 185,979 miles.



**2019 FORD F350** VN:D41083 powered by gas engine, equipped with automatic transmission, power steering, utility body, liftgate, 204,981 miles.

**ONLINE BIDDING AVAILABLE ALL DAYS**  
Please refer to [lyonauction.com](http://lyonauction.com) for an up-to-date listing



## 6 VAN TRUCKS



**2017 FORD F350** VN:E28272 powered by gas engine, equipped with automatic transmission, power steering, cage utility body, liftgate, dual wheel single axle, 182,743 miles.



**2018 FORD F350** VN:C11909 powered by gas engine, equipped with automatic transmission, power steering, 195,568 miles.



**2008 FORD F350** VN:E17672 powered by diesel engine, equipped with automatic transmission, utility body, dual rear wheels.

**2019 FORD F250** VN:D07182 4x4, powered by gas engine, equipped with automatic transmission, power steering, crew cab, 222,500 miles.



**2011 FORD F250** VN:B58140 powered by gas engine, equipped with automatic transmission, power steering, crew cab, utility body, liftgate, air compressor, tool boxes, 136,657 miles.



**2020 FREIGHTLINER M2** VN:LS3376 powered by diesel engine, equipped with automatic transmission, power steering, 26ft. Van body, dual wheel single axle.



**2019 FREIGHTLINER M2** VN:KH5101 powered by diesel engine, equipped with automatic transmission, power steering, 26ft. Van body, dual wheel single axle.



**2016 FREIGHTLINER M2** VN:HH6693 powered by diesel engine, equipped with power steering, van body, dual wheel single axle.



**2020 CHEVY 4500XD** VN:K00808 powered by diesel engine, equipped with automatic transmission, power steering, 16ft. Van body, dual wheel single 201,522 miles.



**2019 ISUZU NPR** VN:800803 powered by gas engine, equipped with automatic transmission, power steering, 275,349 miles.

**2016 ISUZU NPR** VN:7001901 powered by diesel engine, equipped with automatic transmission, power windows, van body, rear lift gate, dual rear wheels, 224,000 miles.

## 21 REEFER TRUCKS



**(8) 2018 FREIGHTLINER M2** powered by Cummins ISB diesel engine, equipped with Allison 2500HS automatic transmission, power steering, 18ft. Reefer body, Thermoking TK V520 reefer unit, dual wheel single axle.



**(3) 2015 FREIGHTLINER M2** powered by Cummins ISB diesel engine, equipped with Allison 2500HS automatic transmission, power steering, 18ft. Reefer body, Thermoking TK V520 reefer unit, dual wheel single axle.



**2015 FREIGHTLINER M2** VN:GC6046 powered by Cummins ISB diesel engine, equipped with Allison automatic transmission, power steering, 18ft. Van body, rear ramp, dual wheel single axle, 249,183 miles.



Like us on  
**Facebook**





**2015 FREIGHTLINER M2** VN:GC6044 powered by Cummins ISB diesel engine, equipped with Allison automatic transmission, power steering, 18ft. Van body, rear ramp, dual wheel single axle, 278,993 miles.



**2015 FREIGHTLINER M2** VN:GC6043 powered by Cummins ISB diesel engine, equipped with Allison automatic transmission, power steering, 18ft. Van body, rear ramp, dual wheel single axle, 260,127 miles.



**(3) 2014 FREIGHTLINER M2** powered by Cummins ISB diesel engine, equipped with Allison 2500HS automatic transmission, power steering, 18ft. Reefer body, Thermoking TK V520 reefer unit, dual wheel single axle.



**2014 FREIGHTLINER M2** VN:FR1248 powered by Cummins ISB diesel engine, equipped with Allison automatic transmission, power steering, 18ft. Van body, rear ramp, dual wheel single axle.



**(3) 2010 FREIGHTLINER M2** powered by Cummins ISB diesel engine, equipped with Allison 2500HS automatic transmission, power steering, 18ft. Reefer body, Thermoking TK V520 reefer unit, dual wheel single axle.

### 16 PICKUP TRUCKS

**(9) NEW UNUSED FORD F350** powered by Powerstroke 6.7L V8 diesel engine, equipped with 10 speed automatic transmission, power steering, a/c, power windows & locks, cruise control, rearview camera, remote keyless entry, trailer package, 164in. Wheelbase, agate black. Warranty.



**2018 FORD F350** VN:1FDRF3E69JEB41847 4x4, powered by gas engine, equipped with automatic transmission, power steering, crew cab, 248,136 miles.



**2017 FORD F250** VN:C51136 4x4, powered by diesel engine, equipped with automatic transmission, power steering, crew cab, 257,321 miles.



**2018 FORD F250** VN:1FT7X2A6XJEC66297 4x4, powered by gas engine, equipped with automatic transmission, power steering, extended cab, liftgate, 88,011 miles.



**2018 CHEVY 2500** VN:167888 4x4, powered by Duramax diesel engine, equipped with Allison automatic transmission, crew cab, power steering, 205,164 miles.



**2018 CHEVY 2500** VN:1GC1KUEG5JF160045 4x4, powered by gas engine, equipped with automatic transmission, power steering, crew cab, 201,390 miles.



**2018 CHEVY 2500** VN:1GC1KUEY6JF168860 4x4, powered by gas engine, equipped with automatic transmission, power steering, crew cab, tool boxes, 188,619 miles.



**2019 DODGE RAM 1500** VN:517921 4x4, powered by gas engine, equipped with automatic transmission, power steering, crew cab, 136,144 miles.





## 5 VANS



2021 NISSAN NV2500 VN:801374 powered by gas engine, equipped with automatic transmission, power steering, van body, 133,014 miles.



2019 NISSAN NV2500 VN:805881 powered by gas engine, equipped with automatic transmission, power steering, van body, 168,959 miles.



2018 FORD TRANSIT VN:358205 powered by gas engine, equipped with automatic transmission, power steering, van body, 88,634 miles.



2016 FORD TRANSIT VN:292223 powered by gas engine, equipped with automatic transmission, power steering, 78,393 miles.

## 5 DETACHABLE GOOSENECK TRAILERS

(3) NEW UNUSED WITZCO RG52 104,000# load capacity, 3 axles with 48' overall length. Removable gooseneck, 8'6" wide, level deck style. Ground bearing, 2 angle scraper gooseneck with self-contained hydraulic system. 22' load deck, tapered front beam, 2" lumber decking & (24) 12" outriggers (12 each side). 3 "D" rings per side of deck & 2 on front stumps at tire area. Hutch 9700 spring suspension, 25,000# capacity axles, 16.5" x 7" air brakes, uni-mount wheels with 255/70 R22.5 Radial tires. Modular wire harness, rubber mounted sealed lights, DOT approved. FET APPLIES

TRAILKING TK-70 VN:N/A equipped with 35 ton capacity, hydra-tail, hydraulic winch, tandem axle.  
PITTS LB-35 VN:N/A equipped with 35 ton capacity, hydraulic ramps, paver special, tandem axle.

### EQUIPMENT TRAILER

2008 TRAILKING VN:1TKS048338B045537 tandem axle.

### 4 TAGALONG TRAILERS

(3) NEW 2025 DELTA 27TB 20FT. equipped with 16ft. Tilt deck, 4ft. Fixed deck, 14,000lb capacity, (2) 7,000lb axles, 235/80R16 tires, HD jack, adjustable hitch, chain storage, LED lights, tandem axle.  
2020 FELLING VN:N/A equipped with 7,000lb GVWR, tilt deck, tandem axle.

### GOOSENECK TRAILER

2020 AUFMAN VN:L006518 equipped with 25ft. Deck, tilt top deck, tandem axle.

### WALKING FLOOR TRAILER

2023 MAC VN:5MAMN4828PW071205 equipped with 48ft. X 102in. Body, tandem axle.

### REFRIGERATED TRAILER



2019 HYUNDAI VN:3H3V532C3LT070148 equipped with 53ft. refer body, Carrier 7300 refer unit, air ride suspension, 295/75R25 tires, tandem axle.

## FUEL TRAILER



500 GALLON VN:N/A with fuel pump, triaxle.

### STINGER

VN:N/A air ride, dual tires.

## TELESCOPIC FORKLIFTS

JLG G6-42A SN:160055175 4x4, powered by diesel engine, equipped with OROPS, 6,000lb lift capacity, 42ft. Reach height.

JLG G6-42A SN:160054162 4x4, powered by diesel engine, equipped with OROPS, 6,000lb lift capacity, 42ft. Reach height.

## ALSO SELLING ON DAY 9

Please refer to [lyonauction.com](http://lyonauction.com) for an up-to-date listing.

HYDRAULIC EXCAVATORS

MINI TIRED LOADERS

MINI TRACKED DUMPERS

SKID STEER ATTACHMENTS

MULTI-USE CONTAINERS

CONTAINERS

MOBILE HOUSES

PORTABLE BATHROOM STATIONS

STORAGE BUILDINGS

SCRAP RECYCLING EQUIPMENT

UTILITY VEHICLES

GOLF CARTS

RECREATIONAL VEHICLES

BOUNCE HOUSES

PARTY RENTAL TENTS

PRESSURE WASHERS (11)

OVER 300 LOTS NEW SUPPORT EQUIPMENT

## Over 1,000 Attachments! Selling All Days!

Every Size & Style that exists will be at this sale!

BRANDS INCLUDE: CAT, KOMATSU, VOLVO, JOHN DEERE, KOBELCO, SANY, DOOSAN, BOBCAT, NEW HOLLAND, STRICKLAND, GEITH, MILLER, INDECO, EPIROC, RAMMER, NPK, BODINE, GENTEC, TERAN, TROJAN, MIDSTATE, GREATBEAR, WOLVERINE, MOWER KING, WILDKAT, TOP CAT, STOUT & MORE!



# AMERICA'S AUCTION COMPANY

## ONLINE BIDDING AVAILABLE ALL DAYS

Please refer to [lyonauction.com](http://lyonauction.com) for an up-to-date listing



# 32<sup>ND</sup> ANNUAL FLORIDA AUCTION

## Bushnell, Florida 2025

Friday, January 31 thru  
Monday, February 10 @ 9:00AM

NOW  
EXPANDED TO  
11 DAYS!

NOW  
EXPANDED TO  
11 DAYS!



### STILL TAKING CONSIGNMENTS



Site Phone: (407) 239-2700 • FL License: AB-1091 • FL Auctioneer: AU-1548 Jack Lyon • Office: (315) 633-2944 • Fax: (315) 633-5635



Visit [WWW.LYONAUCTION.COM](http://WWW.LYONAUCTION.COM)  
for Complete Equipment List,  
Descriptions and Pictures.



America's Auction Company. Big enough for the industry leaders, yet personal enough for America's farmer.





# AUCTION CALENDAR

Go to [WWW.LYONAUCTION.COM](http://WWW.LYONAUCTION.COM) for **START-STOP** times on **TIMED / VIRTUAL AUCTIONS**

1. **LIVE:** Wednesday, January 15: **HOUSTON, TEXAS:** 2 Auctions in 1 Day. Major Cat Job Completion, Rental Fleet Construction Equipment, Aerial Lifts, Forklifts, Attachments, Support, Trucks and Trailers. **HIGHLIGHTS:** Very Late Model John Deere & Cat Construction, Agricultural, Utility Equipment. (2)Unused Bell B45 Articulated Haul Trucks, 2021 Cat 320, (2)2023 JD 210G, 2023 JD 160P, (2)2023 JD 135G, JD 644P, JD 544P, (3)2020 JLG 1255, Telescopic Forklifts, Truck Tractors, Dump Trucks, Pickups, Buckets, Attachments, New Support
  2. **LIVE:** Wednesday, January 22: **QUERETARO, MEXICO:** Late Model Cat, Komatsu, John Deere, Bomag, Hamm Construction & Asphalt Equipment, Trucks, Trailers, Attachments, Support Equipment.
  3. **LIVE:** Friday, January 24: **COLUMBUS (DELAWARE), OHIO:** Late Model John Deere, Case, Cat Construction Utility, Agricultural Equipment, Aerial Lifts, Forklifts, Truck Tractors, Dump Trucks Trailers and Attachments. **HIGHLIGHTS:** (2)Unused Bell B45E, (3)Hydraulic Excavators, (3)2021 Cat 320, (3)2023 JD 210G, (2)2023 JD 160P, (3)2023 JD 135G, 2023 JD 130P, (2)2023 JD 130G, (2)2023 Linkbelt 145X4, (2)2022 Cat 930M, (2)2023 JD 644P, (2)2022 JD 750L, 2023 JD 700L, (2)2024 JD 650P, (3)2024 JD 450P.
  - 4-14. **32<sup>ND</sup> ANNUAL LIVE & TIMED FLORIDA AUCTION:** Friday, January 31 to Monday, February 10: **BUSHNELL, FLORIDA:** Unbelievable! By Popular Demand this Sale will be 11 Glorious Days of Selling New & Like New Rental Fleet Equipment. Only the Best to be Found Here. Construction, Utility Equipment, Aerial Lifts, Forklifts, Dump Trucks, Truck Tractors, All Types of Trailers(the best), Enormous Amount of New & Like New Support, Attachments and more.
  15. **LIVE:** Friday, March 7: **COBLESKILL, NEW YORK:** Very Large Job Completion of Primarily Cat Equipment, Mack Truck Tractors, Mack Dump Trucks, Asphalt Equipment, Support & Attachments.
  16. **TIMED:** Closes- Saturday, March 8, Opens- Friday, February 28: **BRIDGEPORT, NEW YORK:** Rental Fleet Construction, Aggregate, Asphalt Equipment Auction. All Types of Trucks, Trailers, Attachments, Support and New Tools and Several Collectibles.
  17. **LIVE:** Tuesday, March 11: **DALLAS, TEXAS:** Large Late Model Cat, John Deere, Linkbelt, Bomag, Kubota Rental Fleet Equipment, All Types of Trucks, Trailers, Support and Attachments. **HIGHLIGHTS:** Cat Articulated Haul Trucks, Large Quantity John Deere Excavators and Crawler Tractors, Cat Rubber Tired Loaders, Skid Steers, Service and Pickup Trucks.
  18. **LIVE:** Thursday, March 13: **ELKO, NEVADA:** Late Model Large Mining and Construction Equipment & Truck Auction. **HIGHLIGHTS:** Cat 992K, Cat 992D, Cat 992B, Cat 988K, Cat 980K, Cat 980H, Cat 930H, (2) Cat 773B Water Truck, Cat TL1255, Cat D10R, (2)Cat D9T, (2)Cat D8T, (2)Cat D6T, (2)Cat 16M, Cat 16H, Cat 16G, (2)Komatsu HD 785-5, (2) Cat 777G, Cat 775D, (2)Cat 773F, Cat 773E Cat 773D, (4)Cat 740B, Cat 385CL, (2)Cat 336F, Cat 631E, Grove and Linkbelt Cranes, Truck Tractors, Equipment Trailers, Attachments and Support.
  19. **LIVE:** Saturday, March 15: **LAS VEGAS, NEVADA:** Late Model Construction Equipment & Utility Equipment Aerial Lifts, Boom & Scissor Lifts, Forklifts, Attachments, New Trailers, Trucks.
  20. **LIVE:** Friday, March 21: **RAYNHAM, MASSACHUSETTS:** Large Quantity of Late Model Reefer Trucks, Van Trucks, Truck Tractors, Service & Pickup Trucks, Light Construction Equipment, Support & Attachments.
  21. **LIVE:** Saturday, March 22: **MIDDLETOWN, NEW YORK:** Cat, Komatsu, John Deere, Volvo Construction, Utility Equipment, Aerial Lifts, Forklifts, Truck Tractors, Dump Trucks, Service and Pickup Trucks, New Attachments, Support Equipment.
  22. **TIMED:** Closes- Monday, March 24, Opens- Friday, March 14: **TORONTO, CANADA:** Rental Fleet Construction Equipment, Forklifts, Aerial Lifts, Backhoes, Skid Steers, Utility Equipment, Air Compressors, Welders, Generators, Attachments and more.
  - 23-26. **LIVE:** Thursday, March 27, Friday, March 28, Saturday, March 29, **TIMED:** Closes- Sunday, March 30; Opens- Thursday, March 20: **4-DAY ANNUAL ATLANTIC CITY CONTRACTORS AUCTION:** Only the Best Construction Equipment, Aerial Lifts, Forklifts, Utility Equipment, All Kinds of Truck Tractors, Dump Trucks, Various Trucks, Trailers, Large Quantity Support and Accessories.
  27. **LIVE:** Friday, April 4: **BOSTON, MASSACHUSETTS:** Retirement-Over 50 Years in Business. Construction Equipment, Truck Tractors, Dump Trucks, Service, Utility & Pickup Trucks, Parts, All Types of Trailers.
  28. **LIVE:** Friday, April 18: **NORTH HAVEN, CONNECTICUT:** Late Model Rental Fleet Construction & Utility Equipment, Truck Tractors, Dump Trucks, Service & Utility Trucks, All Types of Trailers, Large Quantity Support Equipment, New Buckets.
  29. **TIMED:** Closes- Thursday, April 24, Opens- Thursday, April 10: **CENTRAL PENNSYLVANIA:** Construction, Aggregate, Utility Equipment, All Types of Support, Attachments, Trucks and Trailers.
  30. **LIVE:** Sunday, May 11: **ROCHESTER, NEW YORK:** Unbelievable One Owner Car Collection. Only The Very Best. 38 Years of Collecting. Health Reasons Make This a One-of-A-Kind Collection - As Good As It Gets!
- NEW DATES TO BE ANNOUNCED**
31. **LIVE:** **MANCHESTER, NEW HAMPSHIRE:** Job Completion of Late Model Construction & Aggregate Equipment, Truck Tractors, Dump Trucks, Pickup & Service Trucks, Trailers, Attachments and Support.
  32. **LIVE:** **CHICAGO, ILLINOIS:** It's Big! Complete Liquidation. Very Large Amount of Truck Tractors, Trailers and more.
  33. **LIVE:** **SARDIS, OHIO:** Very Late Model Construction, Utility Equipment, Forklifts, Aerial Lifts, Support, Attachments, Truck Tractors, Dump Trucks, Service, Utility & Pickup Trucks, Trailers.
  34. **LIVE:** **ACME, PENNSYLVANIA:** Rentals, Rentals. Construction, Agricultural and Utility Equipment, All Types of Trucks & Trailers, Attachments and Support.



## MAIN OFFICE

315.633.2944 • 315.633.2872 • 315.633.9544  
EVENINGS: (315) 637-8912, FAX: (315) 633-8010

## BRANCH OFFICES

BRATTLEBORO, VT	802.490.7894	NEW LONDON, CT	860.924.7735
CHICAGO, IL	312.724.5474	OKLAHOMA CITY, OK	405.438.3188
COLUMBUS, OH	614.254.5596	PARKERSBURG, WV	304.699.3050
DALLAS, TX	972.725.7761	RACINE, WI	262.886.2778
DENVER, CO	720.277.0263	ST. LOUIS, MO	314.570.4127
DES MOINES, IA	515.414.2868	TAMPA, FL	813.777.3273
FORT WORTH, TX	817.807.2761	WASHINGTON, DC	202.888.6003
HARRISBURG, PA	717.836.0919	MONTREAL, QC	579.490.5966
HOUSTON, TX	832.450.3910	OTTAWA, ON	579.490.5966
LAS VEGAS, NV	702.475.4992	QUEBEC CITY, QC	579.490.5966
MOBILE, AL	251.510.1538		
NASHVILLE, TN	615.922.5197		

FOLLOW US:  

**FINANCING AVAILABLE FOR PRE-APPROVED PURCHASERS:** You must have prior written approval!

**PATRIOT FINANCIAL LLC** makes low-rate business financing and equipment leasing easy! We're dedicated to providing corporate and small businesses financial solutions to you, so you can grow your company. For immediate or pre-auction approval please call Customer Service at 866-633-6003 or you may apply online with our secure site at [www.patriotfinancialllc.com](http://www.patriotfinancialllc.com).

**STREAMLINE FINANCIAL SERVICES** is a nationally recognized lending specialist working with auction companies and vendors on a daily basis to assist their customers obtain financing for equipment. We offer a variety of financial solutions for light duty to heavy duty, titled equipment (trucks and trailers) to all non-titled equipment (yellow iron, aerial lifts, chippers, skid steers, etc). The representatives at Streamline Financial are experts in finding the best financial program for construction and transportation equipment. We have a solution for all levels of credit from A+ to challenged, and also offer Line of Credit and Working Capital programs to complement your businesses cash flow constraints. Please call Customer Service at 440-358-5060.

**SMART BUSINESS CREDIT** Smart Business Credit is one of the most experienced equipment leasing and finance companies in the industry, to provide financing for our customers. For instant credit approvals, contact Customer Service at 800-798-6862. Also available is a secure online application at [www.Smartbusinesscredit.com](http://www.Smartbusinesscredit.com).

**SALES TAX:** All sales are subject to sales tax.

**SALES TAX EXEMPTIONS:** Buyers with a VALID exemption certificate are not required to pay sales tax for equipment and miscellaneous, but MUST present a copy of their certificate at time of registration at EACH SALE.

**EXPORTERS:** If you take possession of your purchase in the United States, you must pay sales tax. You must provide the following in order not to be charged: Bill of Lading - All export purchases must be removed by a trucking company. The trucking company will provide a Bill of Lading with the purchases listed.

**NOTE:** No items will be released without this document or you may pay tax and be reimbursed once the Bill of Lading or a Dock Receipt is received.

**MOTOR VEHICLES AND TRAILER EXEMPTIONS:** Specific for each state. Please call office for exemption details.



344 S. WARREN STREET, SUITE 201  
SYRACUSE, NY 13202

PRESORTED  
FIRST CLASS MAIL  
U.S. POSTAGE  
PAID  
SYRACUSE, NY  
PERMIT No. 291

**FIRST CLASS MAIL**

To be deleted or make changes to your mailing address scan this QR code. You can then enter the ten digit code found above the address line. Thank you.



All information contained in this brochure was derived from sources believed to be correct, but not guaranteed. We shall not be held liable for any typographical errors or inaccuracies in the content of this brochure. All announcements made day of sale supercede any printed material.

## BUSHNELL, FLORIDA

**FRIDAY, JANUARY 31<sup>ST</sup> - MONDAY, FEBRUARY 10<sup>TH</sup> AT 9:00 AM**

**ONSITE-LIVE / TIMED AUCTIONS**

# 32<sup>ND</sup> ANNUAL FLORIDA AUCTION

**THE GREATEST SALE OF THE YEAR! 11 DAYS OF SELLING!!**



**BottomLine**  
EQUIPMENT LLC

 **United  
Rentals**

315.633.2944

[lyonauction.com](http://lyonauction.com)

[lyonauctionlive.com](http://lyonauctionlive.com)

[lyonmexico.com](http://lyonmexico.com)